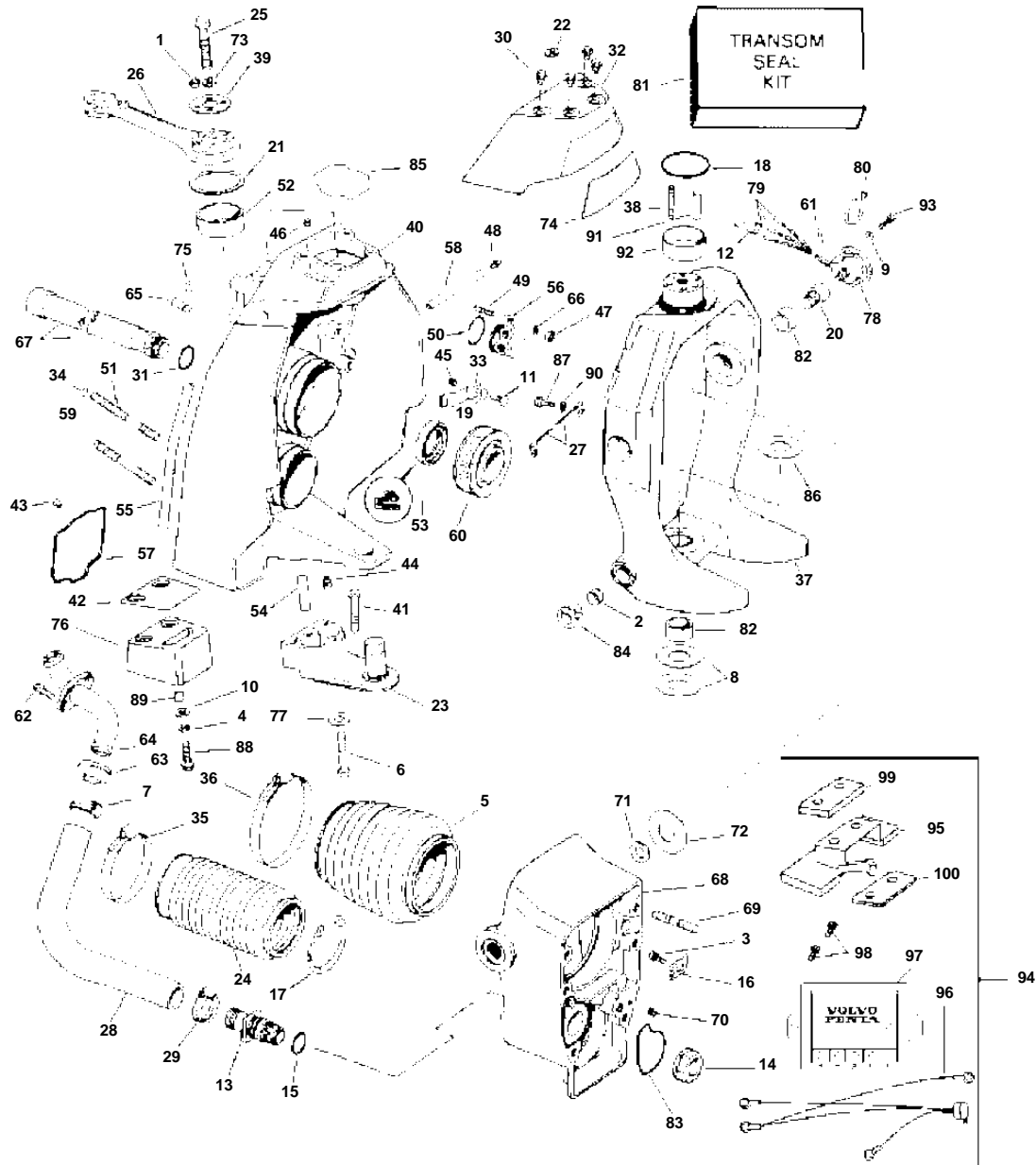


SX-M, -MACLT, -MDA, -MDB, -MHP, -MLT - TRANSOM SHIELD



GR71975

Upd: 22 NOV 2005

GR71975

7797470 - - 0-0002

SX-M, -MACLT, -MDA, -MDB, -MHP, -MLT - TRANSOM SHIELD

REF	PART NO.	QTY	DESCRIPTION	SEE SEC.	NOTES
1	3852004	4	Lock nut, Steering arm stud		Not MHP
2	3853424	2	Grommet, Pivot pin		
3	3852006	1	Screw, Shift cable retainer		
4	3852061	2	Washer, Anode		Not MHP
5	3854127	1	Bellows, U joint		
6	3852151	3	Screw, Support hsg to gimbal hsg		Not MHP
	3852151	5	Screw, Support hsg to gimbal hsg		MHP
7	3852602		Clamp, Water hose		As required
8	3852557	2	Thrust washer, Gimbal to gimbal hsg		
9	3853458	2	Washer, Trim sender to gimbal		
10	3852191	2	Washer, Anode		Not MHP
11	3852201	2	Screw, Clamp, oil line assy, gimbal hsg		
12	3852239	1	Pin connector, Sending unit (3 pin)		
13	3852533	1	Nipple, Water inlet		
14	3852534	1	Nut, Nipple, water inlet		
15	3852535	1	O-ring, Nipple, water inlet		
16	3852313	1	Retainer, Shift cable		
17	3852665	1	Retainer, Bellows to pivot hsg, exhaust		Not MHP
18	3852044	1	O-ring, Gimbal, upper		
19	3852191	2	Washer, Screw, clamp, oil assy, gimbal hsg		
20	3852316	2	Screw, Gimbal to pivot		
21	3852554	1	Thrust washer, Steering arm		
22	3852573	2	Washer, Screw, gimbal hsg cover		MHP
23	3858192	1	Bracket		Not MHP
	3858194	1	Bracket		MHP
24	3850426	1	Rubber bellows		Not MHP
	3857511	1	Exhaust hose		MHP
25	3852591	1	Screw, Steering arm to gimbal		Not MHP
	3853626	1	Screw, Steering arm to gimbal		MHP
26	3852379	1	Spindle arm		Not MHP
	3856093	1	Spindle arm		MHP
27	3857347	1	Ground cable, Pivot housing to gimbal		
28	3852352	1	Hose, Water inlet		
29	948616	1	Strip clamp, Water inlet to hose		
30	3857146	4	Screw, Cap to gimbal housing		Not MHP
	3856726	2	Screw, Gimbal hsg cover		MHP
31	3852537	1	O-ring, Sleeve & connector assy to gimbal hsg		
32	3857238	1	Cover, Gimbal hsg		Not MHP
	3856985	1	Cover, Gimbal hsg		MHP
33	3852354	2	Clamp, Oil line assy, gimbal hsg		
34	3852852	2	Gasket, Transom stud, upper		MHP
35	3852603	1	Clamp, Exhaust bellows		
36	3852604	1	Clamp, U joint bellows		
37	3856987	1	Suspension fork		Not MHP
	3857292	1	Housing		MHP
38	3852588	4	Stud, Gearcase to upper gear hsg		

7797470 - - 0-0002

GR71975

Upd: 22 NOV 2005

SX-M, -MACLT, -MDA, -MDB, -MHP, -MLT - TRANSOM SHIELD

REF	PART NO.	QTY	DESCRIPTION	SEE SEC.	NOTES
39	3852585	1	Plate, Steering arm mounting		Not MHP
40	3856990	1	Housing		Not MHP
	3857642	1	Housing		MHP
41	959422	4	Screw, Gimbal to bracket		MHP
42	3858542	1	Gasket, Anode assy		
43	3852953	4	• Thread insert, Exhaust pipe		
44	3852515	3	• Thread insert, Threaded, 3/8-16		
45	3852513	2	• Thread insert, Threaded, 5/16-18		
46	3852567	4	• Thread insert, Threaded, 5/16-18, short		
47	3852005	1	• Nut, Stud, manifold block		
48	3852121	1	• Fitting, Tube, U joint bearing		
49	3852141	1	• Stud, Manifold block		
50	3852169	1	• O-ring, Manifold block		
51	3852546	6	• Stud, Transom, long		
52	3852547	1	• Bearing, Upper steering		
53	3852548	1	• Seal, Drive shaft		
54	3852549	1	• Pin, Support housing		
55	3852550	1	• Seal, Transom		
56	3852559	1	• Block		
57	3852846	1	• Seal, Exhaust pipe to gimbal hsg		
58	3852564	1	• Tube, Grease fitting		
59	3852576	2	• Stud, Transom, short		
60	3853807	1	• Bearing, U joint		Gas; MDA
	3855707	1	• Bearing, U joint		MDB
61	3852555	1	• Retainer, Plug to gimbal hsg		
62	3852454	2	• Screw, Retainer, water tube		
63	3852556	1	• Bushing, Water tube		
64	3853880	1	• Tube, Gimbal hsg		
65	3851975	1	Plastic plug, Hole, accessory access		
66	3852193	1	Washer, Stud, manifold block		
67	3856800	1	Hose, Shift cable		
68	3857979	1	Housing		
69	3852551	6	• Stud, Pivot to gear hsg		
70	3852514	1	• Thread insert		
71	3852697	2	• Thrust washer, Gimbal to pivot hsg		Incl. in transom seal kit
72	3852558	2	• Thrust washer, Pivot screw, pivot hsg		
73	3852540	1	Washer, Steering arm to gimbal		MHP
74	3857652	1	Decal, Volvo Penta		
75	3852555	1	Retainer, Plug		
76	3854130	1	Zinc anod		
			Bulletin P-44-1-1	P-44-1-1-EN	Anodes, SX AND DP-S
76	3855610	1	Magnesium anode		
77	3852155	3	Washer, Steering support bracket		Not MHP
	3852155	5	Washer, Steering support bracket		MHP
78	3855535	1	Sender		
	3858212	1	Trim indicator		MACLT

7797470 - - 0-0002

GR71975

Upd: 22 NOV 2005

WT Drives, PJX-C, PJX-S SX-M, -MACLT, -MDA, -MDB, -MHP, -MLT, -MTD, DP-E; DP-S, -S1, -S2; DP-SM, -SM



SX-M, -MACLT, -MDA, -MDB, -MHP, -MLT - TRANSOM SHIELD

REF	PART NO.	QTY	DESCRIPTION	SEE SEC.	NOTES
79	3852257	2	Cable terminal, Socket		
80	3852149	1	Lock strap, Trim sender lead to grease tube		
81	3858631	1	Sealing kit		
82	3852544	3	· Bearing, Steering & tilt		Incl. in transom seal kit
83	3852560	1	· Seal, Water passage		Incl. in transom seal kit
84	3853423	4	· Bushing, Pivot pin, trim & tilt cylinder		Incl. in transom seal kit
85	3857087	1	· Seal, Cover to gimbal hsg		
86	3852557	1	· Thrust washer, Gimbal to support bracket		Incl. in transom seal kit
87	3852050	1	Screw, Ground wire		
88	3852192	2	Screw, Anode		M, MLT
	940172	2	Screw, Anode		MDA, MDB
89	3851823	2	Spacer, Anode		Diesel
90	3852193	2	Washer, Ground wire to gimbal		
91	3852545	2	Locating pin, Steering arm		
92	3852571	1	Sleeve, Gimbal		
93	3852081	2	Screw, Trim sender		
94	3851984	1	Corrosion protection		MACLT
	3857622	1	Corrosion protection		MHP
95	3851985	1	· Sensor		MACLT
	3857676	1	· Sensor		MHP
96	3855793	1	· Cable		
97	3851972	1	· Electronic unit		
98	959951	2	· Screw		
99	3856636	1	· Spacer, 0.630 in. (16.03 mm)		Part of 3851984-9 only
100	3856637	1	· Spacer, 0.125 in. (3.18 mm)		Part of 3851984-9 only