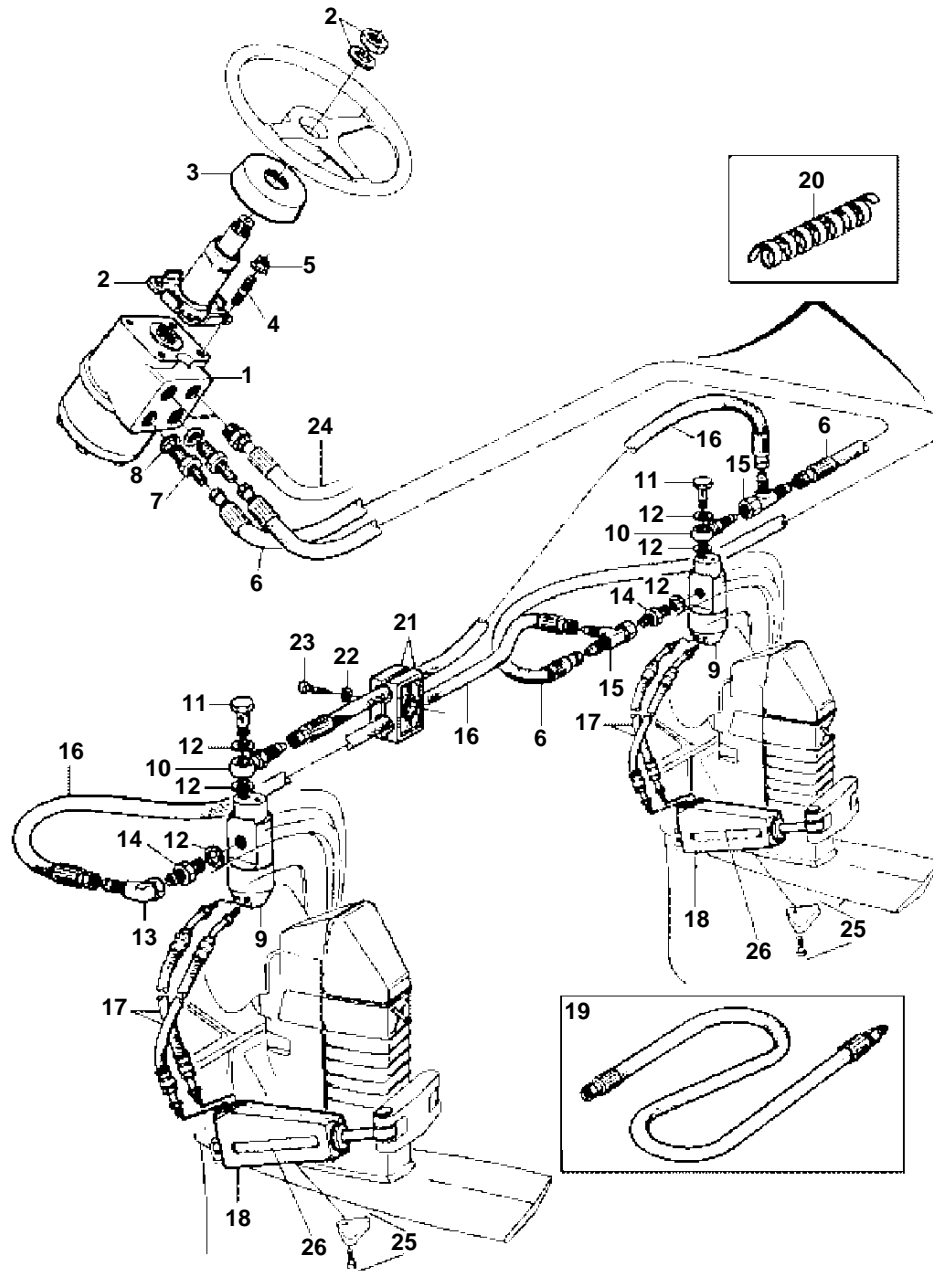


# DPX - XACT™ STEERING & STEERING CYLINDERS (TWIN INSTALLATION)



# DPX - XACT™ STEERING & STEERING CYLINDERS (TWIN INSTALLATION)

REF	PART NO.	QTY	DESCRIPTION	NOTES
1	872156	1	Control unit	
2	872157	1	Retainer	
3	873357	1	Cover	
4	924085	4	Stud	
5	971095	4	Nut	
6	872158	2	Hose, L = 6000 mm	
7	873340	2	Nipple	
8	873341	2	Washer	
9	872956	2	Grommet	
10	873325	2	Banjo nipple	
11	873326	2	Hollow screw	
12	873327	6	Washer	
13	873328	2	Elbow nipple	
14	873329	2	Nipple	
15	873330	2	T-nipple	
16	872166	2	Hose, L = 1200 mm	
17	872593	8	Hose	
18	873231	4	Steering cylinder	Mounted on DPX interm hsg
19	872169	1	Hydraulic hose, L = 1000 mm	
20	873331	1	Coil, L = 500 mm	
21	873335	3	Clamp	
22	873337	3	Washer	
23	873339	3	Screw	
24	872158	2	Hose, For servo pump	
25	872793	2	Zinc anode kit	
	872675	2	· Zinc anod	
	963683	2	· Screw	
26	872965	2	Decal, Steering cylinder	

7797470 - - 0-0029

GR71125

Upd: 22 NOV 2005

WT Drives, PJX-C, PJX-S SX-M, -MACLT, -MDA, -MDB, -MHP, -MLT, -MTD, DP-E; DP-S, -S1, -S2; DP-SM, -SM

