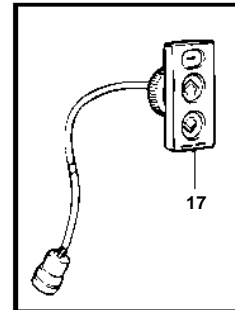
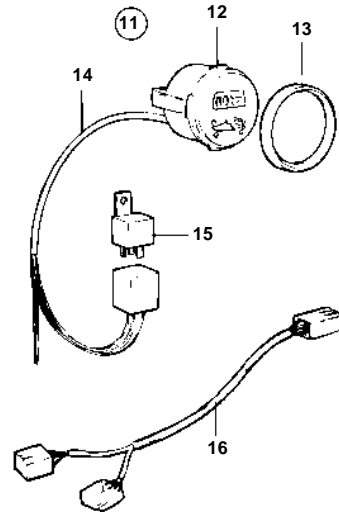
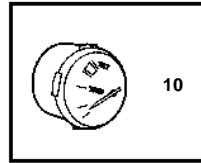
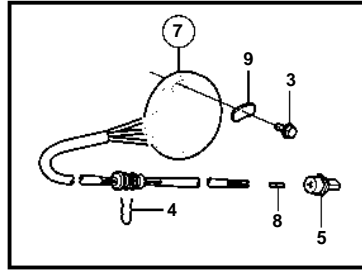
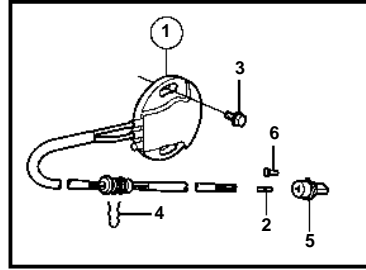


SX-M, SX-MACLT, SX-MBAC, SX-MHP



SX-M, SX-MACLT, SX-MBAC, SX-MHP

REF	PART NO.	QTY	DESCRIPTION	NOTES
1	3863129	1	Sender	
2	3852257	2	· Cable terminal	
3	3852081	2	Screw	
4	3852555	1	Retainer	
5	3852239	1	Pin connector	
6	3852230	1	Plug	
7	3855115	X	Sender	DUAL STATION
	3858212	1	Sender	DIGITAL
8	3852257	3	· Cable terminal	
9	3853458	2	Washer	
10	3851787	X	Trim gauge	ANALOG
11	3860248	X	Trim gauge	DIGITAL
12	3819708	1	· Instrument kit	
13	858643	1	· · Front ring	
14	856821	1	· Cable kit	
15	1324492	2	· Relay	
16	853066	1	· Cable trunk	
17	3855650	1	Control panel	