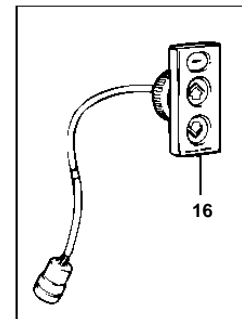
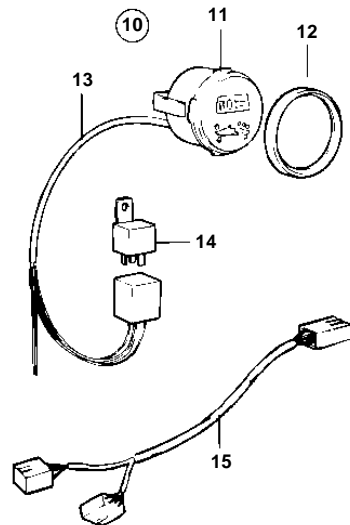
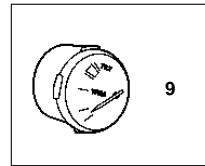
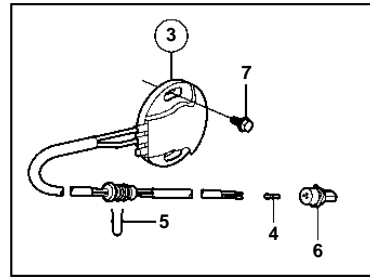
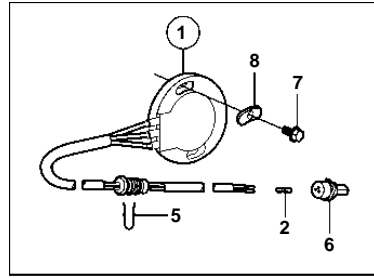


SX-M, SX-MACLT, SX-MLT, SX-MBAC, SX-MHP, SX-MDA, SX-MDB, SX-MDC



SX-M, SX-MACLT, SX-MLT, SX-MBAC, SX-MHP, SX-MDA, SX-MDB, SX-MDC

REF	PART NO.	QTY	DESCRIPTION	NOTES
1	3863007	1	Sender	EARLIER PROD
	3855115	X	Sender	DUAL STATION
	3858212	1	Sender	DIGITAL
2	3852257	3	· Cable terminal	
3	3863129	1	Sender	LATER PROD
4	3852257	2	· Cable terminal	
5	3852555	1	Retainer	
6	3852239	1	Pin connector	
7	3852081	2	Screw	
8	3853458	2	Washer	
9	3851787	X	Trim gauge	ANALOG
10	3860248	X	Trim gauge	DIGITAL
11	3858773	1	· Trim gauge	
12	858643	1	· · Front ring	
13	856821	1	· Cable kit	
14	1324492	2	· Relay	
15	853066	1	· Cable trunk	
16	3855650	1	Control panel	