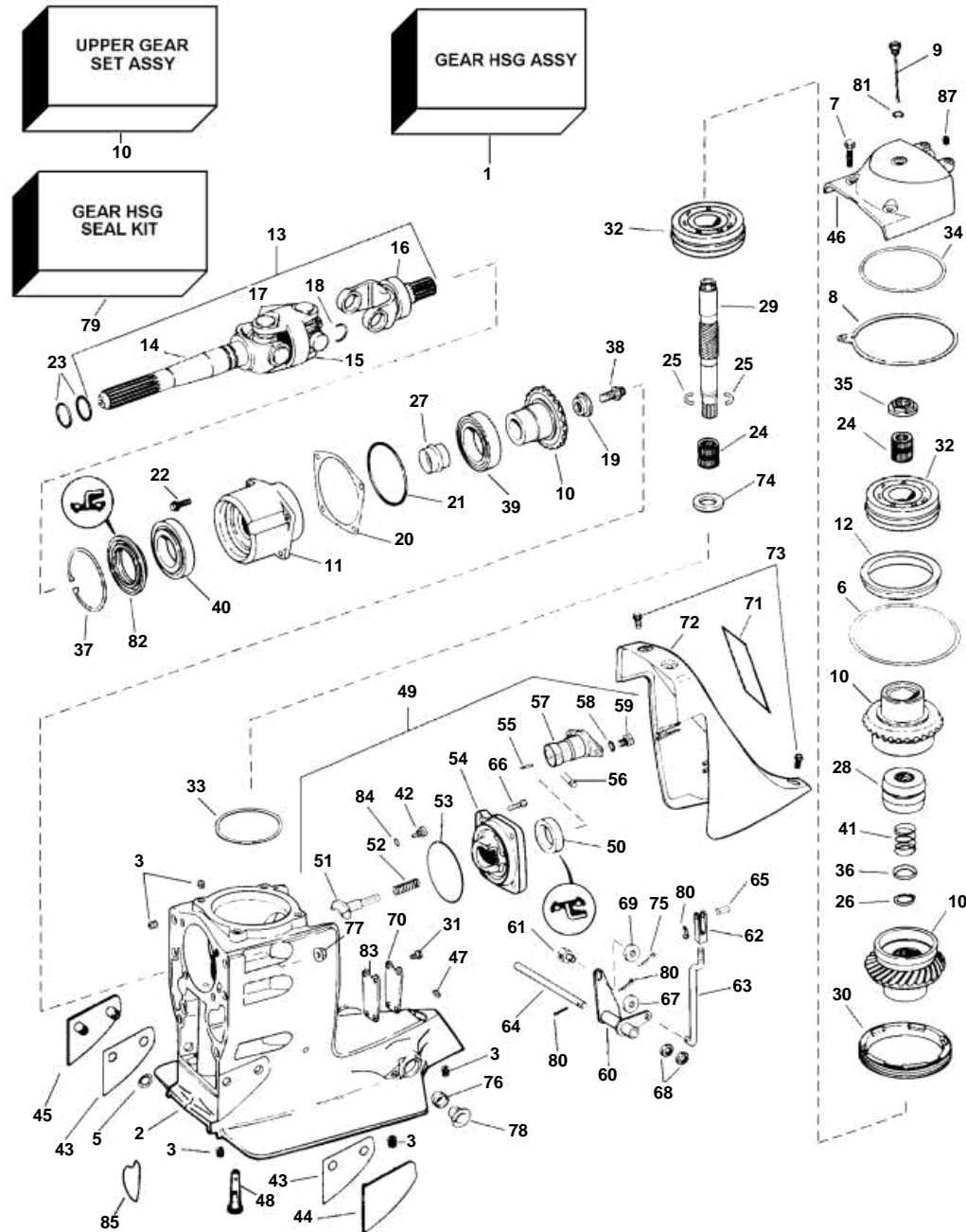


# SX-C1, -CT1, -RT1; DP-S, -S1 - UPPER GEAR UNIT



Upd: 22 NOV 2005

GR960284

7797430 - - 0-0003

# SX-C1, -CT1, -RT1; DP-S, -S1 - UPPER GEAR UNIT

REF	PART NO.	QTY	DESCRIPTION	SEE SEC.	NOTES
	3868166	1	Drive unit, Complete assy, DP-S		1.68:1; not shown
	3868165	1	Drive unit, Complete assy, DP-S		1.78:1; not shown
	3868164	1	Drive unit, Complete assy, DP-S		1.95:1; not shown
	3868163	1	Drive unit, Complete assy, DP-S		2.30:1; not shown
	3868604	1	Drive, Complete assy, DP-S1		1.68:1; not shown
	3868603	1	Drive, Complete assy, DP-S1		1.78:1; not shown
	3868602	1	Drive, Complete assy, DP-S1		1.95:1; not shown
	3868601	1	Drive, Complete assy, DP-S1		2.32:1; not shown
	3868392	1	Drive, Complete assy, SX-C1		1.43:1; not shown
	3868393	1	Drive, Complete assy, SX-C1		1.51:1; not shown
	3868394	1	Drive, Complete assy, SX-C1		1.60:1; not shown
	3868395	1	Drive, Complete assy, SX-C1		1.66:1; not shown
	3868465	1	Drive, Complete assy, SX-C1		1.85:1; not shown
	3868581	1	Drive, Complete assy, SX-C2		1.43:1; not shown
	3868582	1	Drive, Complete assy, SX-C2		1.51:1; not shown
	3868583	1	Drive, Complete assy, SX-C2		1.66:1; not shown
	3868584	1	Drive, Complete assy, SX-C2		1.79:1; not shown
	3868585	1	Drive, Complete assy, SX-C2		1.89:1; not shown
	3868586	1	Drive, Complete assy, SX-C2		1.97:1; not shown
	3868816	1	Drive, Complete assy, SX-C2		2.18:1; not shown
	3868396	1	Drive, Complete assy, SX-CT1		1.85:1; not shown
	3868397	1	Drive, Complete assy, SX-CT1		1.97:1; not shown
	3868398	1	Drive, Complete assy, SX-RT1		1.66:1; not shown
	3868333	1	Drive, Complete assy, SX-RT1		2.18:1; not shown
	3868587	1	Drive, Complete assy, SX-RT2		1.66:1; not shown
	3868818	1	Drive, Complete assy, SX-RT2		1.79:1; not shown
	3868588	1	Drive, Complete assy, SX-RT2		2.18:1; not shown
1	3857007	1	Upper gear unit, Upper, 22:23		1.43, 1.51, 1.60, 1.66, 1.78, 1.85, 1.95
	3857010	1	Upper gear unit, Upper, 21:26		1.79, 1.89, 1.97, 2.18, 2.32
2	3855775	1	Gear housing, Upper		
3	3852541	1	· Insert, Threaded, 7/16-14		
	3852515	5	· Thread insert, Threaded, 3/8-16		
	3852513	9	· Thread insert, Threaded, 5/16-18		
5	3852516	4	Ring retainer, Thrust plate to upper gear		
6	3852363	X	Shim, Upper bearing, 0.002 in. (0.05 mm)		
	3852364	X	Shim, Upper bearing, 0.003 in. (0.08 mm)		
	3852365	X	Shim, Upper bearing, 0.004 in. (0.10 mm)		
	3852366	X	Shim, Upper bearing, 0.005 in. (0.13 mm)		
	3852367	X	Shim, Upper bearing, 0.010 in. (0.25 mm)		
7	3850629	4	Screw, Top cover to upper gear hsg		
8	3852317	1	Gasket, Top cover to upper gear hsg		
9	3854847	1	Oil dipstick, Oil indicator, upper gear hsg cover		
10	3851203	1	Gear set, Upper		DP-S1 1.68, 1.78, 1.95 only
	3851505	1	Gear set, Pinion & drive gears		1.43, 1.51, 1.60, 1.66, 1.85
	3851793	1	Gear set, Pinion & drive gears		1.79, 1.89, 1.97, 2.18, 2.32
		2	· DRIVE GEAR		

7797430 - - 0-0003

GR960284

Upd: 22 NOV 2005

# SX-C1, -CT1, -RT1; DP-S, -S1 - UPPER GEAR UNIT

REF	PART NO.	QTY	DESCRIPTION	SEE SEC.	NOTES
10		1	· PINION GEAR		
11	3852267	1	Bearing carrier, Pinion		
12	3852269	1	Support ring, Upper bearing support		
13	3852384	1	Universal joint		
			Bulletin P-44-1-5	P-44-1-5-EN	U-joints
14	3850815	1	· Yoke		
15	3850813	1	· Intermediate section		
16	3850814	1	· Yoke		
17	3850812	2	· Spider		
18	3850757	4	· Lock clip, U-joint		
19	3852310	1	Washer, Pinion gear		
20	3852355	X	Adjusting washer, Bearing carrier, 0.003 in (0.08 mm)		
	3852356	X	Adjusting washer, Bearing carrier, 0.004 in (0.10 mm)		
	3852357	X	Adjusting washer, Bearing carrier, 0.005 in (0.13 mm)		
	3852358	X	Adjusting washer, Bearing carrier, 0.010 in (0.25 mm)		
21	3852308	1	O-ring, Bearing carrier		
22	3852454	4	Screw, Pinion brg carrier to upper gear hsg		
23	3852565	2	O-ring, U joint		
24	3852390	2	Needle bearing, Drive gear		
25	3852295	2	Lock ring, Upper drive shaft		
26	3852299	1	Snap ring, Spring		
27	3852304	1	Sleeve, Bearings, input gear		
28	3855783	1	Sliding sleeve		
29	3852292	1	Shaft, Upper		
30	3852262	1	Retainer, Lower bearing		
31	3852373	4	Screw, Water passage plate & gasket		To upper gear hsg
32	3852389	2	Ball bearing, Drive gear		
33	3852368	X	Adjusting washer, Lower bearing, 0.002 in (0.05 mm)		
	3852369	X	Adjusting washer, Lower bearing, 0.003 in (0.08 mm)		
	3852370	X	Adjusting washer, Lower bearing, 0.004 in (0.10 mm)		
	3852371	X	Adjusting washer, Lower bearing, 0.005 in (0.13 mm)		
	3852372	X	Adjusting washer, Lower bearing, 0.010 in (0.25 mm)		
34	3852368	X	Adjusting washer, Upper cover, 0.002 in (0.05 mm)		
	3852369	X	Adjusting washer, Upper cover, 0.003 in (0.08 mm)		
	3852370	X	Adjusting washer, Upper cover, 0.004 in (0.10 mm)		
	3852371	X	Adjusting washer, Upper cover, 0.005 in (0.13 mm)		
	3852372	X	Adjusting washer, Upper cover, 0.010 in (0.25 mm)		
35	3852301	X	Nut, Upper drive shaft, 0.000 in		
	3852302	X	Nut, Upper drive shaft, 0.008 in (0.2 mm)		
	3852303	X	Nut, Upper drive shaft, 0.016 in (0.4 mm)		
	3852375	X	Nut, Upper drive shaft, 0.024 in (0.6 mm)		
36	3852298	1	Washer, Spring		
37	3852307	1	Lock ring, Seal, U-joint assy		
38	3852309	1	Screw, Washer, pinion to U-joint assy		
39	3850852	1	Bearing, Bearing carrier, pinion		Rear
40	3850853	1	Bearing, Pinion to outer carrier		

7797430 - - 0-0003

GR960284

Upd: 22 NOV 2005

# SX-C1, -CT1, -RT1; DP-S, -S1 - UPPER GEAR UNIT

REF	PART NO.	QTY	DESCRIPTION	SEE SEC.	NOTES
41	3852296	1	Spring, Clutch cone to shaft		
42	3854539	1	Plug, Oil drain, lower gear case		
43	3852563	X	Adjusting washer, Thrust plate, 0.015 in (0.38 mm)		
44	3852561	1	Thrust plate, Gear hsg, port		
45	3852562	1	Thrust plate, Gear hsg, stbd		
46	3854401	1	Bearing cover, Upper gear unit, top		
47	3852567	2	• Thread insert, Threaded, 5/16-18, short		
48	3854021	1	Strainer, Gear hsg		
49	3855787	1	Shift mechanism, Upper gear hsg		Rear
50	853858	1	• Sealing ring		
51	3856502	1	• Shoe		
52	814184	1	• Spring, Shift shoe		
53	925093	1	• O-ring, Shift actuator		Part of gear hsg seal kit
54	3855785	1	• Bearing housing		
55	973593	1	• Pin, 2 x 12		
56	942871	1	• Pin, 5 x 18		
57	3856008	1	• Eccentric piston		
58	897871	X	• Adjusting washer		
59	897711	1	• Screw		
60	3852276	1	Gear yoke, Shift		
61	3852329	1	Cube, Shift cable to bellcrank		
62	3857218	1	Bracket, Shift linkage		
63	3857217	1	Link rod, Shift linkage		
64	3852277	1	Pin, Shift		
65	3852330	1	Clevis pin, Shift link to piston		
66	3856742	4	Screw, Shift hsg to upper gear hsg		
67	3852184	1	Washer, Trunnion, shift cable to bellcrank		
68	3852193	2	Washer, Shift link to bellcrank		
69	3852083	1	Washer, Pin, bellcrank to gear hsg		
70	3852280	1	Plate, Water passage		
71	3855356	1	Decal, VP SX Cobra		
	3855360	1	Decal, VP SX Diesel		
72	3852418	1	Cover, Upper gear housing		Rear
73	3852568	3	Screw, Cover		
74	3852294	1	Ring, Upper driveshaft		
75	3854480	1	Pin, Trunnion shift cable to bellcrank		
76	3853423	2	Bushing, Pivot pin		
77	3853329	6	Nut, Drive to pivot hsg		
78	3853424	2	Grommet, Pivot pin bushing		
79	3850594	1	Sealing kit, Upper gear hsg		
80	3852052	3	• Cotter pin		
81	3852045	1	• O-ring, Plug, upper gear housing cover		
82	3852272	1	• Seal, U-joint to bearing carrier		
83	3852279	1	• Gasket, Water passage		
84	3855081	1	• O-ring, Oil drain plug		
85	3852560	1	• Seal, Water passage		

7797430 - - 0-0003

GR960284

Upd: 22 NOV 2005

**SX-C1, -CT1, -RT1; DP-S, -S1 - UPPER GEAR UNIT**

REF	PART NO.	QTY	DESCRIPTION	SEE SEC.	NOTES
85	3855644	2	Decal, SX Cobra, gasoline		Not shown
	3855645	2	Decal, SX, diesel		Not shown
	3855646	2	Decal, DP Duoprop, upper gear, port & stbd		Not shown
	3855647	2	Decal, DP Duoprop, upper gear hsg cover		Not shown