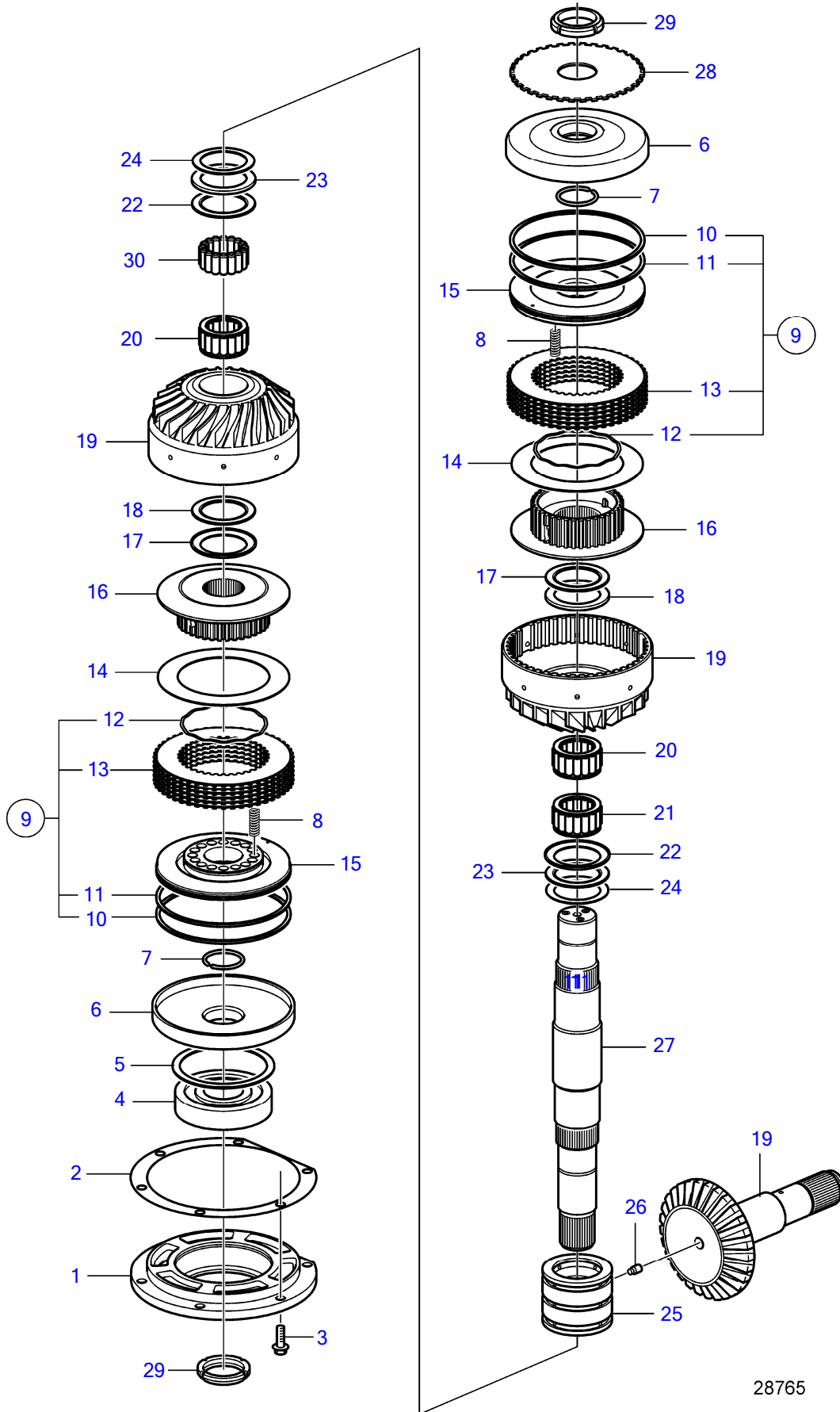


IPS3-C



IPS3-C

REF	PART NO.	QTY	DESCRIPTION	SEE SEC.	NOTES
1	(3818911)	1	Bearing housing		Obsolete part
2	3884689	X	Shim		TH=0.08mm
	3884690	X	Shim		TH=0.13mm
	3884691	X	Shim		TH=0,25mm
3	984755	6	Flange screw		
4	11038	1	Ball bearing		
5	(3883878)	1	Snap ring		Obsolete part
6	3817684	2	Cylinder		
7	3883485	2	Lock ring		
8	872585	32	Spring		
9	22641260	2	Disc kit		
10	994421	2	• O-ring		
11	40005557	2	• Piston ring		
12	21177270	16	• Spring		
13	(21420918)	2	• Disc		Obsolete part
14	21533895	2	Disc spring		
15	21482105	2	Piston		
16	3817680	2	Hub		Replaced by 22933883
	22933883	2	Hub		
17	3817664	2	Thrust washer		
18	184055	2	Needle roller assemb		
19		1	Gear set	41384	
20	990933	2	Needle roller assemb		
21	995126	1	Needle roller assemb		
22	184055	2	Needle roller assemb		
23	3817664	2	Thrust washer		
24	3817666	2	Washer		
25	21697753	1	Bearing shell kit		
26	21790143	1	Set screw		
27	22387422	1	Shaft		Replaced by 22933879
	22933879	1	Shaft		
28	3818303	1	Cam disc		Obsolete part
29	969077	2	Round nut		
30	997713	54	Needle roller		

47707336-44-41382

28765

Upd:3/8/2019

IPS3-C

VOLVO
PENTA