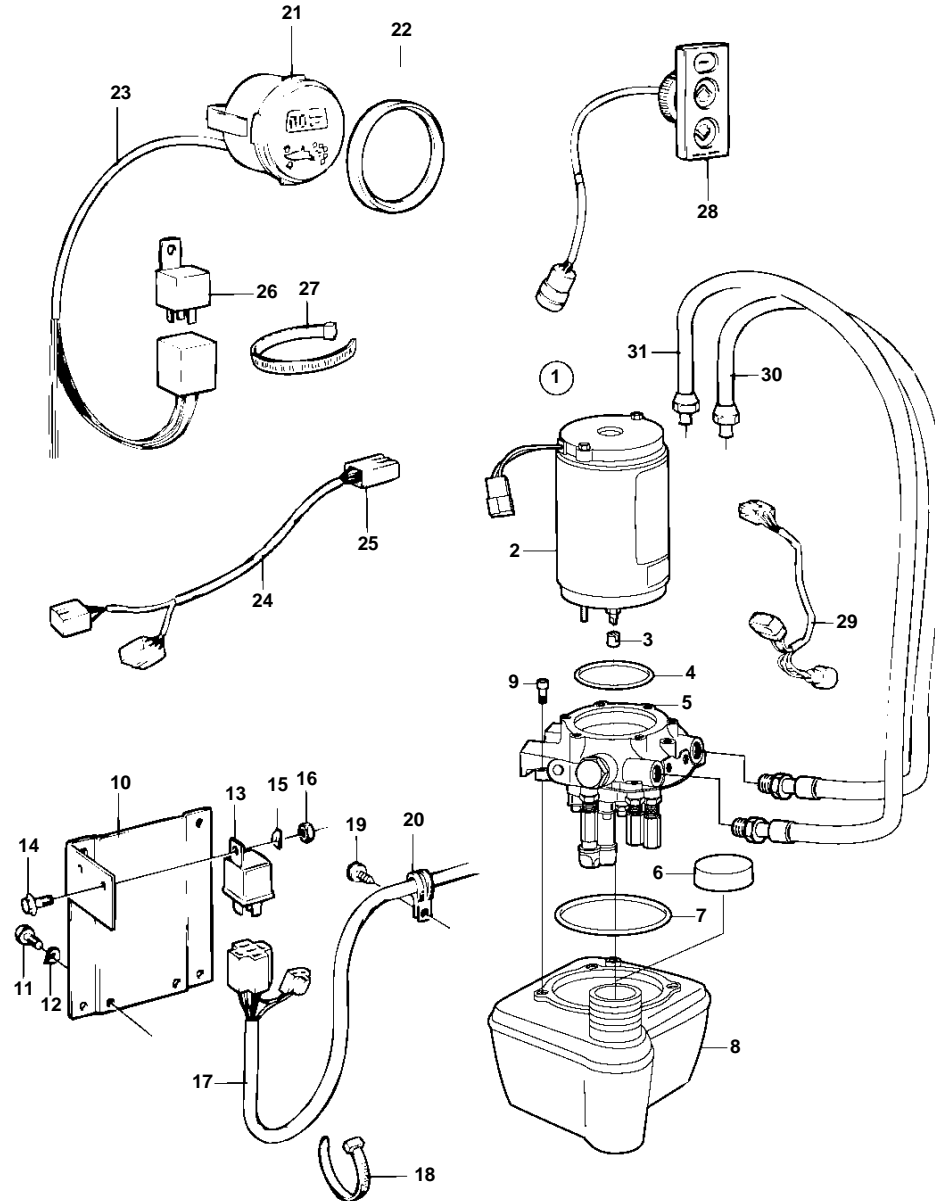


DP-E, SP-E



DP-E, SP-E

REF	PART NO.	QTY	DESCRIPTION	SEE SEC.	NOTES
1	3860880	1	Pump		
2	3861576	1	• Electrical motor		
3	3861577	1	• Connector		
4	3861578	1	• O-ring		
5		1	• Valve body	NS	
6	3861572	1	• Cap		
7	3861573	1	• O-ring		
8	3861570	1	• Reservoir		
9	3861574	4	• Screw		
10	854438	1	Bracket		
11	970945	2	Screw		
12	941908	2	Spring washer		
13	854357	2	Relay		
14	948663	2	Screw		
15	941905	2	Spring washer		
16	955780	2	Nut		
17	872448	X	Cable kit		
18	948211	1	Strip clamp		
19	968476	4	Flange screw		
20	952630	4	Clamp		
21	872498	1	Trim gauge		
22	858643	1	Front ring		
23	856821	1	Cable kit		
24	853066	1	Cable trunk		DUAL STATION
25		X	• Cable harness		SE GROUP 30
26	872300	2	Relay		12V 30A. Replaced by relay 1324492 and mounting instruction.
	1324492	2	Relay		WITH BUILT IN DIOD. NB! Changed polarity. See mounting instruction.
27	949666	X	Strip clamp		
28	3855650	1	Control panel		(873617), (853846)
29	853032	1	Cable trunk		
	948294	X	• Receptacle housing		9-POLE
	965822	X	• Cable terminal		3,5x1x2,5
	853498	X	• Receptacle housing		3-POLE
	853521	X	• Cable terminal		FOR 853498
30	873228	1	Hydraulic hose	7305	
31	873229	1	Hydraulic hose	7305	