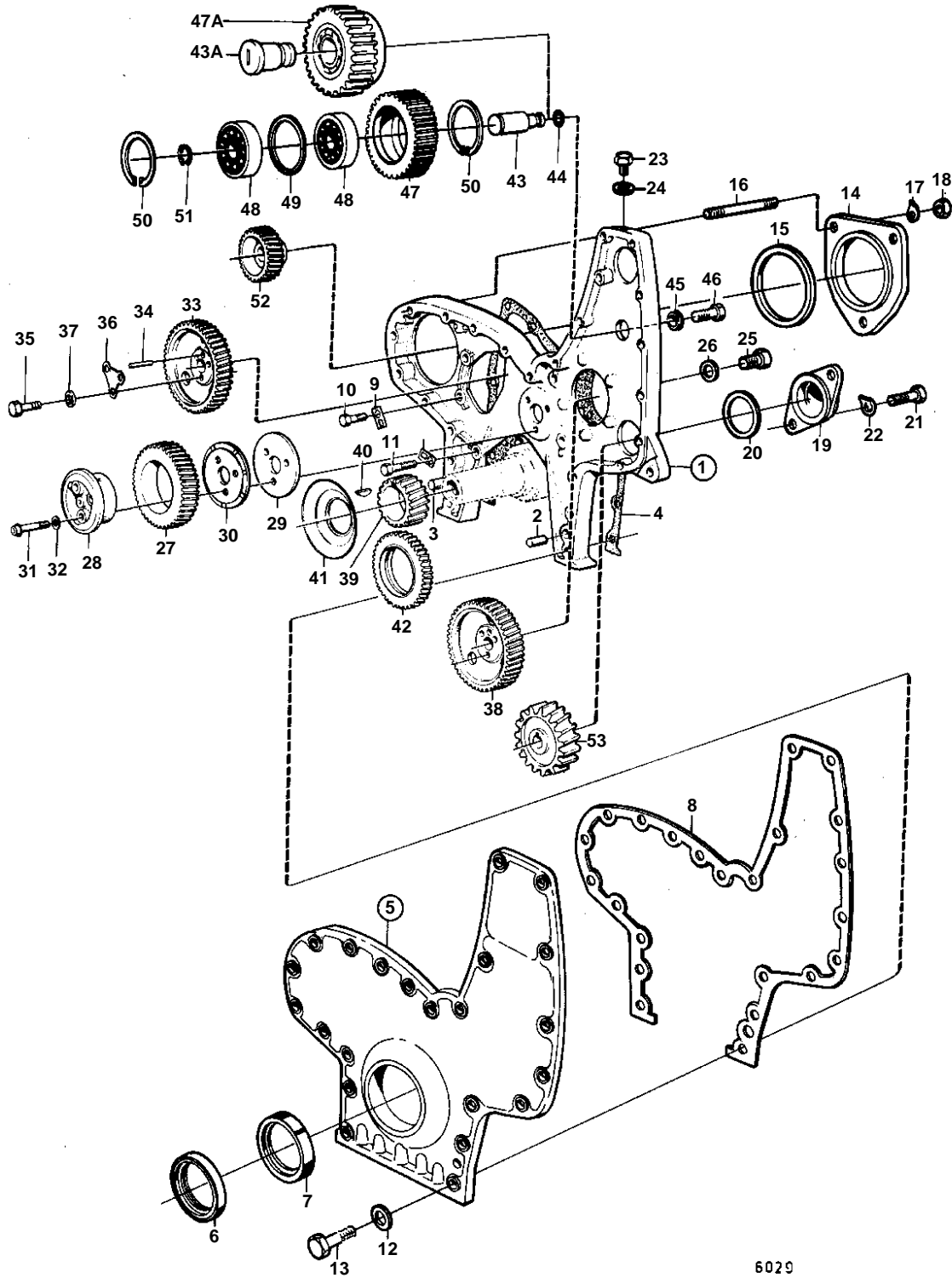


TID120FG, TID120F PP



6029

TID120FG,TID120F PP

REF	PART NO.	QTY	DESCRIPTION	SEE SEC.	NOTES
1	468509	1	Timing gear casing		MO-62538/XXXXX. MB20B MO-XXXX/86637.
	470230	1	Timing gear casing		MO62539/XXXXX-
2	941510	1	· Pin		
3	941511	1	· Pin		
4	468557	1	Gasket	IK	
5	842444	1	Cover		
6	941666	1	· Felt ring	IK	
7	837851	1	· Sealing ring	IK	
8	468116	1	Gasket	IK	
9	941572	5	Lock washer		
10	941939	4	Screw		L = 29 MM
11	955537	1	Screw		L = 51 MM
12	942336	18	Spring washer		
13	955542	8	Screw		L = 83 MM
	940162	8	Screw		L = 38 MM
	955536	2	Screw		L = 45 MM
14	420178	1	Cover		
15	413619	1	Gasket	IK	
16	953346	3	Stud		
	955576	3	Screw		ALT
17	941911	3	Spring washer		
18	955828	3	Nut		
19	468093	1	Cover		
20	468094	1	Sealing ring	IK	
21	955535	2	Screw		
22	942336	2	Spring washer		
23	961894	1	Plug		
24	925059	1	O-ring	IK	
25	192114	1	Plug		
26	18677	1	Gasket		
27	467461	1	Drive		
			Bulletin 45-01	45-01-EN	Timing Gears, 71, 100, 121
28	467463	1	Bearing spindle		
29	467529	1	Thrust washer		
30	467528	1	Bearing shield		
31	468738	3	Screw		
32	942180	3	Washer		
33	423079	1	Gear	02A-0800	
			Bulletin 45-01	45-01-EN	Timing Gears, 71, 100, 121
34	950588	1	Pin		
35	940128	3	Screw		
36	467052	1	Lock washer		
37	467055	3	Washer		
38	423079	1	Gear		SEE GROUP 2C
			Bulletin 45-01	45-01-EN	Timing Gears, 71, 100, 121
39	423080	1	Crankshaft gear	02A-0950	
			Bulletin 45-01	45-01-EN	Timing Gears, 71, 100, 121
40	422253	1	Woodruff key		
41	423177	1	Oil deflector		
42	422047	1	Gear	02A-1450	
43	468127	1	Pin		ONLY WHEN REVERSE GEAR IS INSTALLED.
43A	470215	1	Pin		ALT. MB20B MOXXXX/86638-.
44	955993	1	O-ring	IK	
45	470180	1	Washer		(468132)
46	955550	1	Screw		(955549)
47	468927	1			(468130). ONLY WHEN REVERSE GEAR IS INSTALLED.
47A	470226	1	Idler gear		ALT COMPL. MB20B MOXXXX/86638-.
48	11013	2	Ball bearing		
49	468131	1	Spacer sleeve		
50	914533	2	Snap ring		
51	914462	1	Lock ring		
52	423087	1	Gear		
			Bulletin 45-01	45-01-EN	Timing Gears, 71, 100, 121

TID120FG,TID120F PP

REF	PART NO.	QTY	DESCRIPTION	SEE SEC.	NOTES
53	422087	1	Gear		SEE GROUP 9
			Bulletin 45-01	45-01-EN	Timing Gears, 71, 100, 121