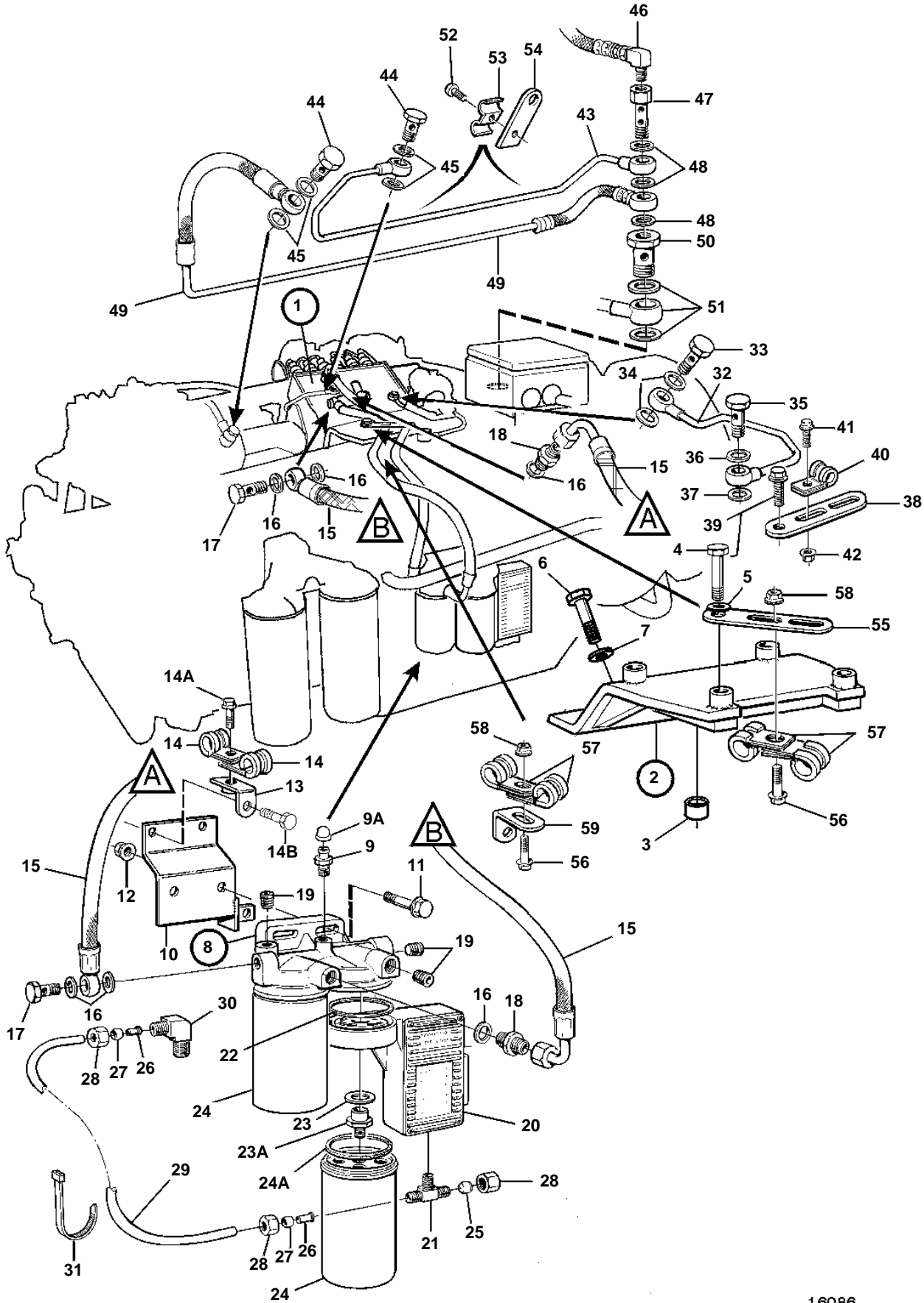


DH10A



16986

DH10A

REF	PART NO.	QTY	DESCRIPTION	SEE SEC.	NOTES
1	425758	1	Injection pump		
	3803676	1	Injection pump, exch		Exchange unit
			Comps. not spec.		
	3803676		Injection pump, exch		
			Comps. not spec.		
2		1	Bracket		
3		1	· Guide sleeve		
	823575	2	Spacer sleeve		
4	955566	2	Screw		1/2UNCx64
	955567	2	Screw		1/2UNCx70
	425519	2	Screw		3/8x32. Prepared with locking fluid.
5	940280	4	Spring washer		
6	955542	4	Screw		
7	190509	4	Washer		
8	8194541	1	Filter housing		
9	20548012	1	· Tap		
9A		1	· Protecting cover		
10	3827703	1	Bracket		(3826932)
11	946752	2	Flange screw		
12	971095	2	Nut		ALT
13	1130611	1	Bracket		
14	952630	2	Clamp		
14A	940094	1	Screw		
14B	946329	2	Flange screw		
15	3829230	2	Fuel hose		
16	969011	6	Gasket		
17	25167	2	Hollow screw		
18	941754	2	Nipple		
19	968062	3	Plug		
20	3828683	1	Control unit	SO	DH10A-245
	3828682	1	Control unit	SO	DH10A-285
	889319	1	Control unit	SO	DH10A-360
21	946082	1	· Nipple		
22	3825387	1	· Sealing ring		
23	955904	1	Washer		
23A	3835801	1	Nipple		
24	3825133	2	Fuel filter		
24A		2	· Gasket		
25	943006	1	Plug		
26	944717	2	Sleeve		
27	954364	2	Fitting		
28	954356	3	Cap nut		
29	980831	X	Tube		L=2220mm
30	954385	1	Elbow nipple		
31	948211	X	Strip clamp		
32	425421	1	Oil return pipe		
33	48634	1	Hollow screw		
34	947281	2	Gasket		
35	942007	1	Hollow screw		
36	942703	1	Gasket		
37	11998	1	Gasket		
38	965534	1	Bracket		
39	946173	1	Flange screw		
40	952623	1	Clamp		
41	945414	1	Screw		
42	945407	1	Flange nut		
43	425148	1	Oil feed pipe		
44	969299	2	Hollow screw		
45	11994	4	Gasket		
46		1	Oil feed pipe	3504	
47	425566	1	Hollow screw		
48	11994	3	Gasket		
49		1	Oil feed pipe		

DH10A

REF	PART NO.	QTY	DESCRIPTION	SEE SEC.	NOTES
50	479464	1	Hollow screw		
51		1	Connector	3503	
52	950046	2	Screw		
53	404279	2	Clamp		
54	466919	2	Anchorage		
55	965542	1	Bracket		
56	945444	2	Flange screw		
57	942810	2	Clamp		
58	945408	2	Flange nut		
59	965552	1	Bracket		