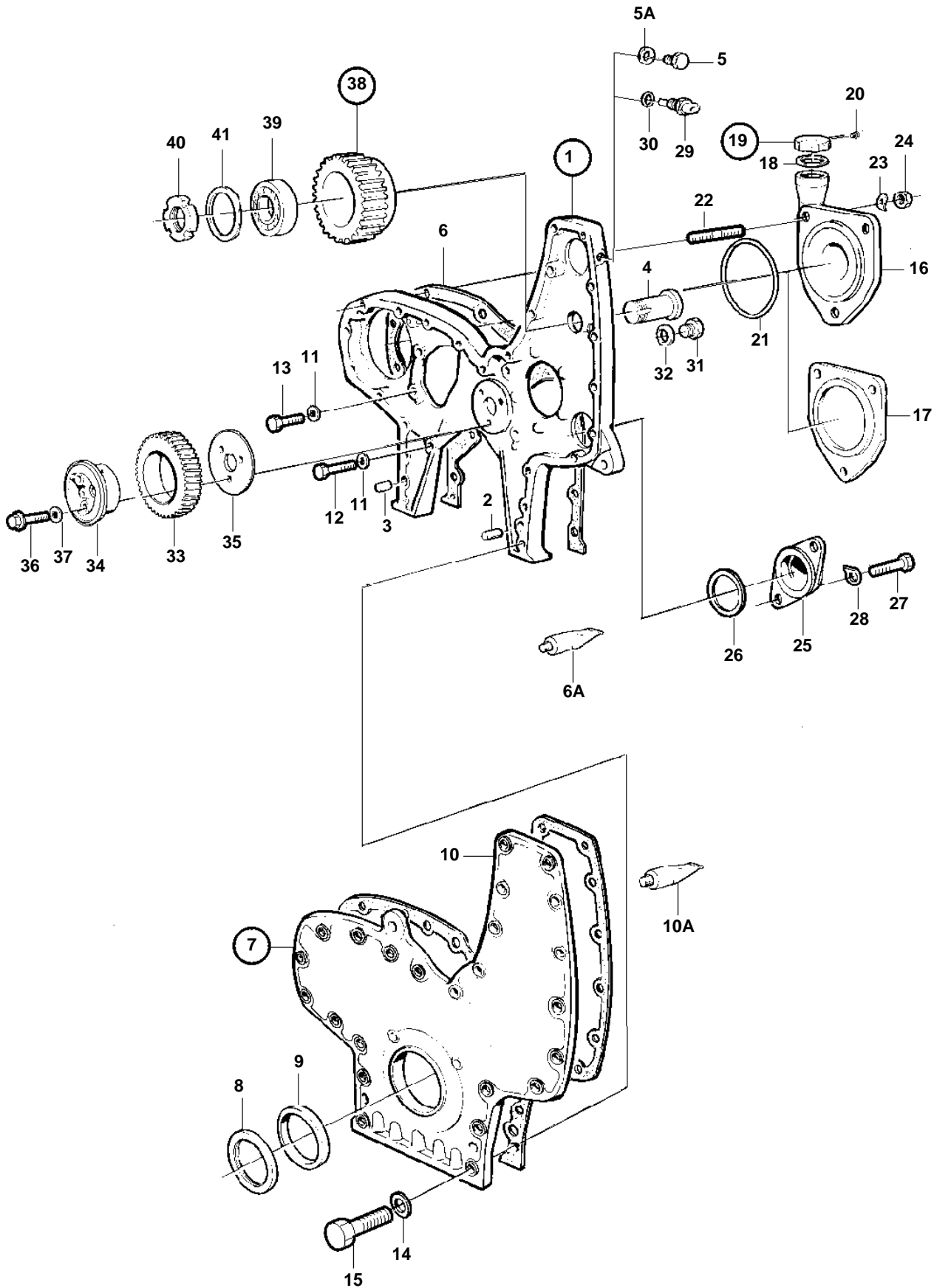


TD121G-87



## TD121G-87

REF	PART NO.	QTY	DESCRIPTION	SEE SEC.	NOTES
1	470646	1	Timing gear casing	SO	SN -2120224464
	8194639	1	Timing gear casing		SN2120224465- (479666). Replaced by 8194639.
	8194639	1	Timing gear casing		
2	941510	1	· Pin		
3	941511	1	· Pin		
4	8194626	1	· Pin		(470219)
5	960633	2	· Plug		M20
5A	947625	2	· Gasket		
6	468557	1	Gasket		EARLY TYPE
6A	1161231	X	Sealant		304ml LATE TYPE
	1161277	X	Sealant		10g LATE TYPE
7	864623	1	Cover		
8	941666	1	· Felt ring		
9	424983	1	· Sealing ring		
10	468116	1	Gasket		EARLY TYPE
10A	1161231	X	Sealant		304ml LATE TYPE
	1161277	X	Sealant		10g LATE TYPE
11	942336	5	Spring washer		
12	941939	4	Screw		L=29mm
13	955537	1	Screw		L=51mm
14	942336	22	Spring washer		
15	940162	8	Screw		L=38mm
	955540	2	Screw		L=70mm
	955542	8	Screw		L=83mm
16	849197	1	Tube, oil filling		
17	420178	1	Cover, air compr.		
18	940096	1	Gasket		
19	421753	1	Oil filler cap		
20	955126	3	· Screw		
21	975610	1	O-ring		
22	953346	3	Stud		
23	941911	3	Spring washer		
24	955828	3	Nut		
25	468093	1	Cover, hydraulic pump		
26	468094	1	Sealing ring		
27	955535	2	Screw		
28	942336	2	Spring washer		
29	862289	1	Sender, rpm		
30	949656	1	O-ring		
31	192114	1	Plug		7/8UNF
32	18677	1	Gasket		
33	467461	1	Drive		
			Bulletin 45-01	45-01-EN	Timing Gears, 71, 100, 121
34	422766	1	Spindle		
35	478951	1	Thrust washer		
36	468738	3	Screw		
37	942180	3	Washer		
38	470231	1	Idler gear, water pump		
39		1	· Ball bearing	NS	
40	906634	1	Round nut		
41	907024	1	Lock washer		