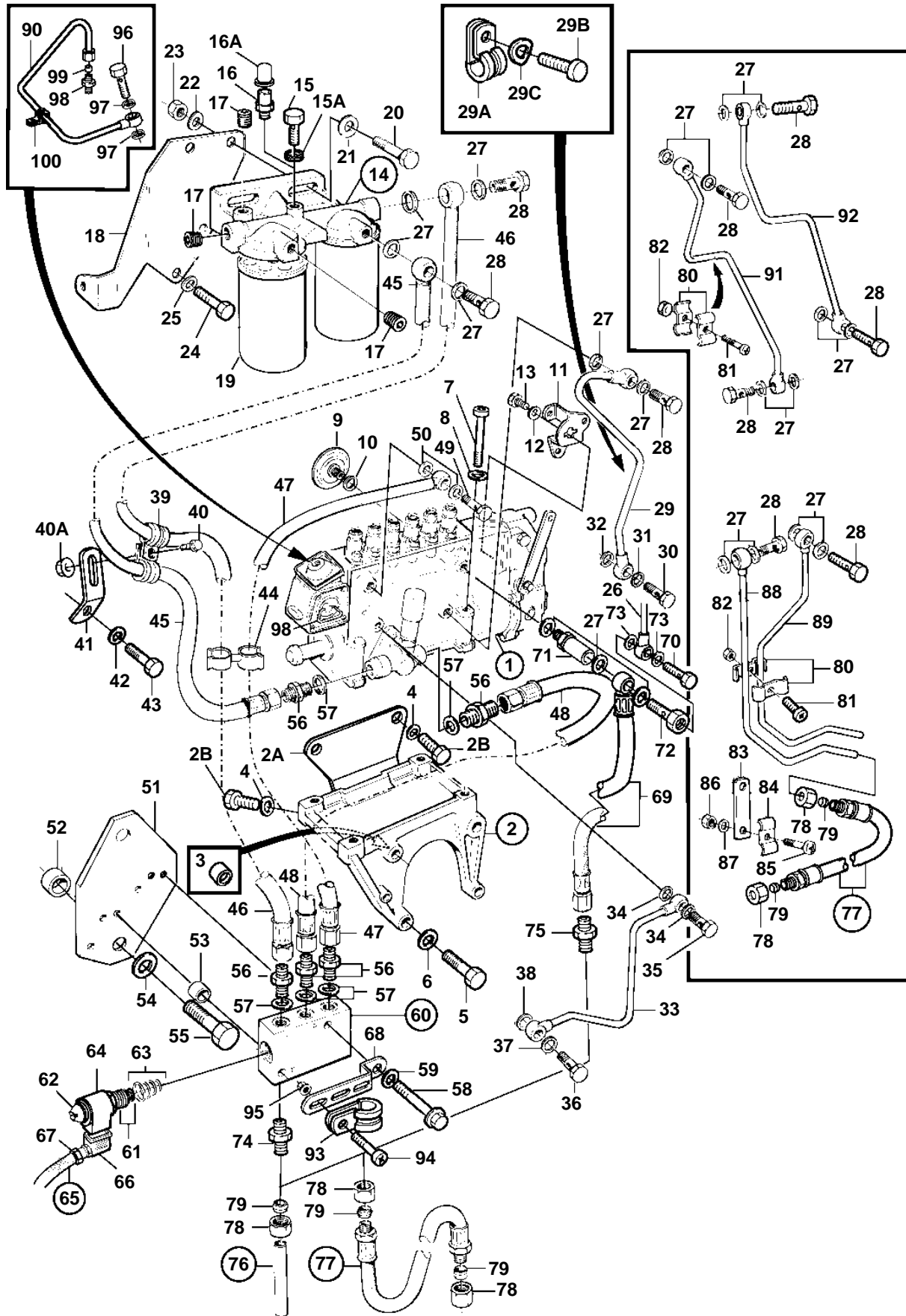


TAD1230P



20109

TAD1230P

| REF | PART NO. | QTY | DESCRIPTION | SEE SEC. | NOTES |
|-----|----------|-----|----------------------|----------|--------------------|
| 1 | 865851 | 1 | Injection pump | | |
| | 3803720 | 1 | Injection pump, exch | | Exchange unit |
| | | | | 2170 | |
| 2 | 866784 | 1 | Bracket | | |
| 2A | | 1 | • Support | | |
| 2B | 479696 | 4 | • Screw | | |
| 3 | | 2 | • Guide sleeve | | |
| 4 | 940097 | 4 | • Washer | | |
| 5 | 955566 | 4 | Screw | | |
| 6 | 940280 | 4 | Spring washer | | |
| 7 | 940156 | 4 | Screw | | |
| 8 | 190509 | 4 | Washer | | |
| 9 | 477173 | 1 | Pressure equalizer | | |
| 10 | 969011 | 1 | Gasket | | |
| 11 | | 1 | Lever | | For stop solenoid. |
| 12 | 941906 | 1 | Spring washer | | For stop solenoid. |
| 13 | 955637 | 1 | Screw | | For stop solenoid. |
| 14 | 1676832 | 1 | Filter housing | | REPL BY 8194541 |
| | 8194541 | 1 | Filter housing | | |
| 15 | 471177 | 1 | • Screw, air venting | | FOR 1676832 |
| 15A | 947620 | 1 | • Gasket | | FOR 1676832 |
| 16 | 1330191 | 1 | • Tap, air venting | | FOR 8194541 |
| 16A | 656456 | 1 | • Protecting cover | NS | FOR 8194541 |
| 17 | 968062 | 3 | Plug | | |
| 18 | 476438 | 1 | Bracket | | |
| 19 | 3825133 | 2 | Fuel filter | | (466987) |
| 20 | 940162 | 1 | Screw | | L=38mm |
| | 955536 | 1 | Screw | | L=45mm |
| 21 | 960142 | 2 | Washer | | |
| 22 | 942336 | 2 | Spring washer | | |
| 23 | 955827 | 2 | Nut | | |
| 24 | 940114 | 2 | Screw | | |
| 25 | 942336 | 2 | Spring washer | | |
| 26 | 470185 | 1 | Leak-off line | | |
| 27 | 969011 | X | Gasket | | |
| 28 | 25167 | X | Hollow screw | | |
| 29 | 478964 | 1 | Oil return pipe | | |
| 29A | 952623 | 1 | Clamp | | |
| 29B | 950045 | 1 | Screw | | |
| 29C | 941906 | 1 | Spring washer | | |
| 30 | 942007 | 1 | Hollow screw | | |
| 31 | 11998 | 1 | Gasket | | |
| 32 | 942703 | 1 | Gasket | | |
| 33 | 866615 | 1 | Pipe | | |
| 34 | 947281 | 2 | Gasket | | |
| 35 | 48634 | 1 | Hollow screw | | |
| 36 | 942081 | 1 | Hollow screw | | |
| 37 | 11998 | 1 | Gasket | | |
| 38 | 18666 | 1 | Gasket | | |
| 39 | 952631 | 2 | Clamp | | |
| 40 | 967949 | 1 | Screw | | (965175) |
| 40A | 945407 | 1 | Flange nut | | |
| 41 | 965552 | 1 | Bracket | | (965570) |
| 42 | | 1 | Washerwater pump | | |
| 43 | | 1 | Screwwater pump | | |
| 44 | 866663 | 2 | Clamp | | |
| 45 | 3826263 | 1 | Fuel hose | | |
| 46 | 3825602 | 1 | Fuel hose | | |
| 47 | 3825603 | 1 | Fuel hose | | |
| 48 | 3826142 | 1 | Fuel hose | | |
| 49 | 25167 | 1 | Hollow screw | | |
| 50 | 969011 | 2 | Gasket | | |
| 51 | 3826145 | 1 | Bracket | | |

TAD1230P

| REF | PART NO. | QTY | DESCRIPTION | SEE SEC. | NOTES |
|-----|----------|-----|---------------------------------|----------|--|
| 52 | 1678297 | 2 | Spacer sleeve | | |
| 53 | 843075 | 2 | Sleeve | | |
| 54 | 940280 | 2 | Spring washer | | |
| 55 | 955570 | 2 | Screw | | |
| 56 | 941754 | 5 | Nipple | | |
| 57 | 969011 | 5 | Gasket | | |
| 58 | 973924 | 2 | Flange screw | | |
| 59 | 976944 | 2 | Washer | | (966674) |
| 60 | 866699 | 1 | Shut-off valve | | |
| 61 | | 1 | • Valve | | |
| 62 | | 1 | • Nut | | |
| 63 | 3825238 | 1 | • Gasket kit | | |
| 64 | 3825240 | 1 | • Magnet | | |
| 65 | 866927 | 1 | Cable kit | | |
| 66 | 866664 | 1 | • Connector unit | | |
| 67 | 844576 | 1 | • Cable union | | |
| 68 | 845999 | 1 | Bracket, oil return pipe, turbo | | |
| 69 | 3825603 | 1 | Fuel hose | | |
| 70 | 74033 | 1 | Hollow screw | | |
| 71 | 3825154 | 1 | Overflow valve | | For engine with electric fuel stop valve. |
| | 35096 | 1 | Overflow valve | | For engine without electric fuel stop valve. |
| 72 | 16496 | 1 | Hollow screw | | |
| 73 | 947620 | 2 | Gasket | | |
| 74 | 977677 | 1 | Nipple | | |
| 75 | 957055 | 1 | Nipple | | |
| 76 | 3825770 | 2 | Fuel pipe | | |
| 77 | 865737 | 6 | • Fuel hose | | |
| 78 | 956983 | 6 | • Nut | | |
| 79 | 956969 | 2 | Ferrule | | |
| 80 | 404279 | 4 | Clamp | | |
| 81 | 950047 | 2 | Screw | | |
| 82 | 955825 | 2 | Nut | | |
| 83 | 965545 | 1 | Bracket | | |
| 84 | 404279 | 1 | Clamp | | |
| 85 | 950048 | 1 | Screw | | |
| 86 | 955825 | 1 | Nut | | |
| 87 | 955893 | 1 | Washer | | |
| 88 | 865760 | 1 | Pipe | | |
| 89 | 866933 | 1 | Pipe | | |
| 90 | | 1 | Tube | | |
| 91 | 468480 | 1 | Fuel pipe | | |
| 92 | 468481 | 1 | Fuel pipe | | |
| 93 | 952631 | 1 | Clamp | | |
| 94 | 956094 | 1 | Screw | | |
| 95 | 955781 | 1 | Nut | | |
| 96 | 969299 | 1 | Hollow screw | | |
| 97 | 11994 | 2 | Gasket | | |
| 98 | 949554 | 1 | Nipple | | |
| 99 | 954365 | 1 | Fitting | | |
| 100 | 942400 | 1 | Clamp | | |