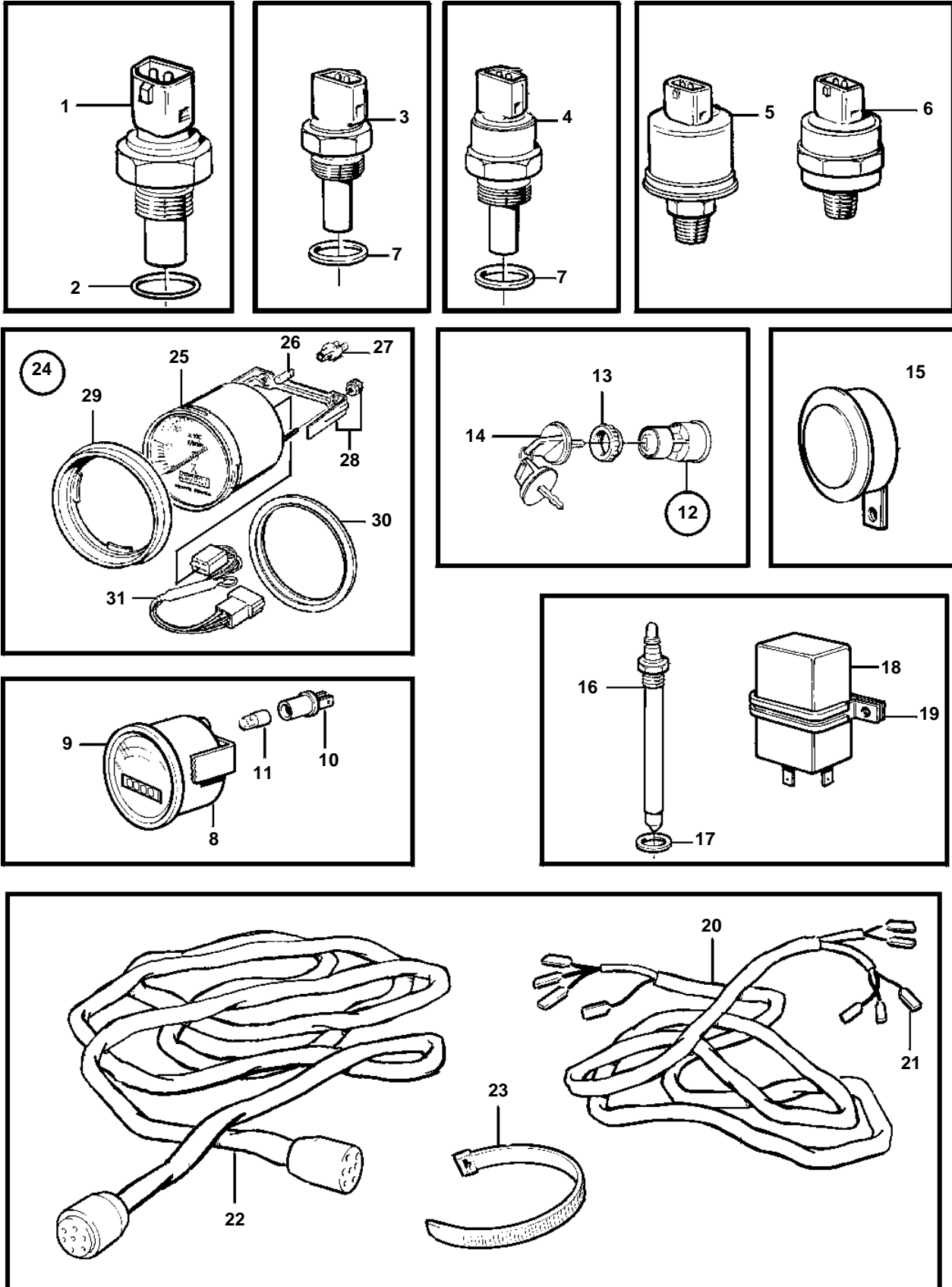


TD121GP-87, TWD1210P, TWD1211P, TAD1230P



TD121GP-87, TWD1210P, TWD1211P, TAD1230P

REF	PART NO.	QTY	DESCRIPTION	SEE SEC.	NOTES
1	862289	1	Sender, rpm		
2	949656	1	O-ring		(925059)
3	862154	1	Temperature sensor, coolant water temp.		MAX 120°C
4	862250	1	Thermo monitor, coolant water temp.		97°C
	848829	1	Temperature sensor, coolant water temp.		103°C
5	866835	1	Pressure sensor, oil-engine		0-10bar (862155)
6	863169	1	Pressure monitor, oil pressure		0,7bar
7	947624	2	Gasket		
8	872479	1	Hour counter, hour meter		12V-24V
	849848	1	Thermometer, coolant water temp.		
	849849	1	Oil pressure gauge, oil pressure		
	862096	1	Voltmeter		24V
9	858644	1	Front ring		D=95mm, FOR 872040
	858643	1	Front ring		D=65mm, FOR 872479
10	808175	1	Bulb socket		FOR 854908,872040,. For bulb with base BA 7s. 849848, 849849, 862096
	863945	1	Bulb socket		FOR 872479. For bulb with base W2X4,6d.
11	182059	1	Bulb		24Vx3W BA 7S
	863946	1	Bulb		12Vx1,2W W2x4,6d
	863947	1	Bulb		24Vx1,2W W2x4,6d
	828818	1	Bulb		FOR 862096
12	864277	1	Starter switch		Diode 1624694 should be used on engines with stop solenoid, energized to run.
13	859955	1	· Plastic nut		
14	859953	2	· Key		State key code when ordering.
			· Bulletin 49-30	49-30-EN	Key P/N 859953
15	8143028	1	Horn		24V, (872874)"
16	1581232	1	Level indicator		L=86mm. Not for expansion tank made of plastic.
	1581226	1	Level indicator		L=136mm (849371). For expansion tank made of plastic.
17	11994	1	Gasket		
18	1622515	1	Level relay		
19	941772	1	Clamp		
20	866894	1	Wiring harness		ENGINE (862218)
21		X	· Electrical materials	1963	
22	863867	X	Cable trunk		L=2500mm
	863868	X	Cable trunk		L=8000mm
23	948211	X	Strip clamp		FOR 866894
24	872040	1	Instrument, tachometer		Replaced by operating clock/tachometer 873722 and intermediate ring 873721.
	854908	1	Tachometer, hour/tachometer		Replaced by operating clock/tachometer 873722 and intermediate ring 873721.
	873722	1	Rev counter kit, hour/tachometer		Replaced by hour/ tachometer 874012.
	874012	1	Rev counter kit, hour/tachometer		
25		1	· Tachometer, hour/tachometer		
26	943638	1	· Bulb		
27	863945	1	· Bulb socket		
28	873208	1	· Retainer, brace		
29	873683	1	· Front ring		
30	873721	1	Intermediate ring		
31	873695	1	Diode cable		FOR 873722