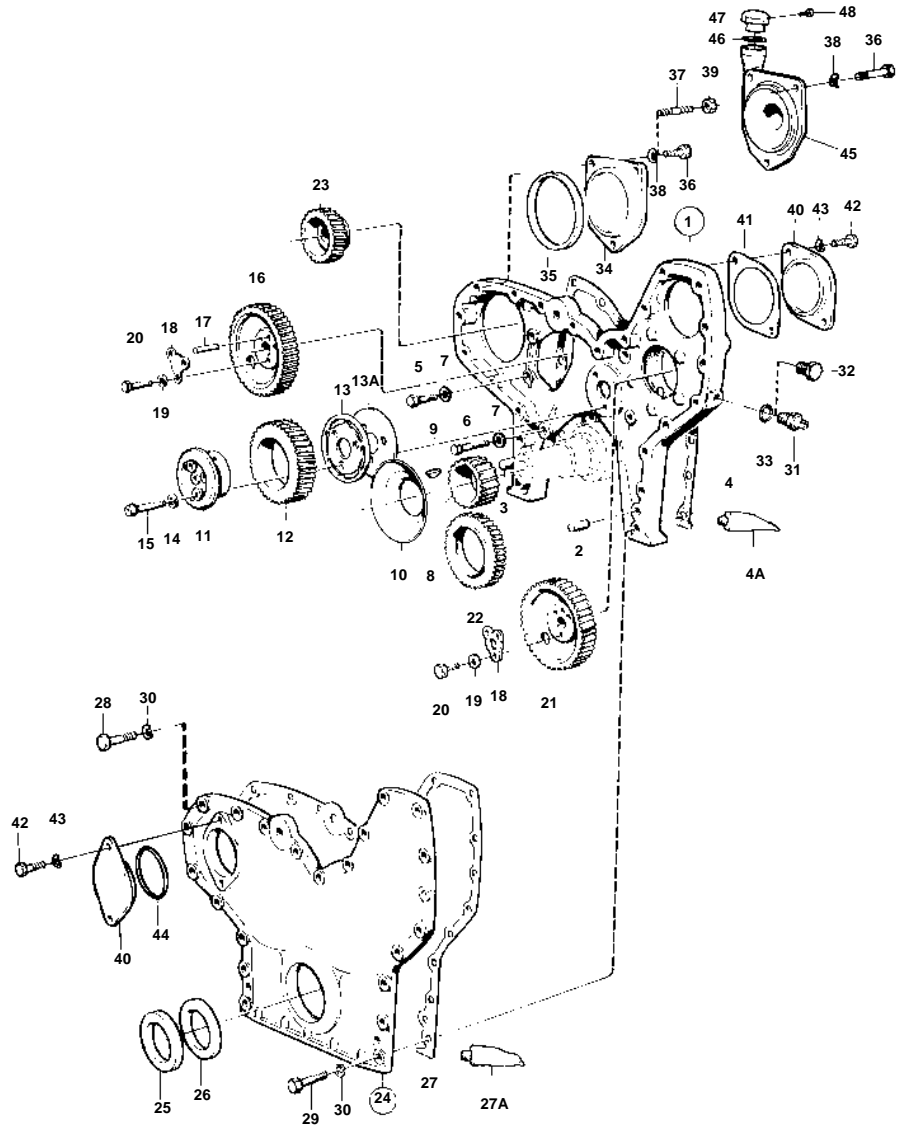


TID100-87



9956

TID100-87

REF	PART NO.	QTY	DESCRIPTION	SEE SEC.	NOTES
1	422622	1	Timing gear casing		
2	941510	1	· Pin		L = 48 MM
3	941511	1	· Pin		L = 56 MM
4	468557	1	Gasket	IK	
4A	1161231	X	Sealant		
5	941939	4	Screw		
6	955537	1	Screw		
7	942336	5	Spring washer		
8	423080	1	Crankshaft gear		
			Bulletin 45-01	45-01-EN	Timing Gears, 71, 100, 121
9	422253	1	Woodruff key		
10	423177	1	Oil deflector		
11	422766	1	Spindle		
12	467461	1	Drive		
			Bulletin 45-01	45-01-EN	Timing Gears, 71, 100, 121
13	467529	1	Thrust washer		
13A	467528	1	Bearing shield		
14	942180	3	Washer		
15	468738	3	Screw		
16	423079	1	Gear		SN-XXXXXXXXXX/220979
			Bulletin 45-01	45-01-EN	Timing Gears, 71, 100, 121
16	478297	1	Gear		NITRO. SNXXXXXXXXXX/220980-
			Bulletin 45-01	45-01-EN	Timing Gears, 71, 100, 121
17	950558	1	Pin		
18	467052	2	Lock washer		
19	467055	6	Washer		
20	940128	3	Screw, CAMSHAFT		
	102056	3	Screw, INJ.PUMP		
21	423079	1	Gear, INJECTION PUMP		SN-XXXXXXXXXX/220979
			Bulletin 45-01	45-01-EN	Timing Gears, 71, 100, 121
21	478297	1	Gear, INJECTION PUMP		NITRO. SNXXXXXXXXXX/220980-
			Bulletin 45-01	45-01-EN	Timing Gears, 71, 100, 121
22	422047	1	Gear		
23	423087	1	Gear		SN-XXXXXXXXXX/220979
			Bulletin 45-01	45-01-EN	Timing Gears, 71, 100, 121
23	478289	1	Gear		NITRO. SNXXXXXXXXXX/220980-
			Bulletin 45-01	45-01-EN	Timing Gears, 71, 100, 121
24	864622	1	Cover		(844365)
25	941666	1	· Felt ring	IK	
26	424983	1	· Sealing ring	IK	
27	422626	1	Gasket	IK	
27A	1161231	X	Sealant		
28	940162	12	Screw		L = 38 MM
29	955541	8	Screw		L = 76 MM
30	942336	20	Spring washer		
31		1	TACHOMETER SENSOR		SEE GROUP 3
32	943681	1	Plug		
33	925059	1	O-ring	IK	
34		1	COVER		
35	975610	1	O-ring	IK	
36		3	SCREW		
37	953346	3	Stud		
38	941911	3	Spring washer		
39	955828	3	Nut		
40	420183	1	Cover		
41	862591	1	Gasket	IK	
42	940115	2	Screw		
43	942336	2	Spring washer		
44	420213	1	Seal	IK	
45	849197	1	Tube		
46	940096	1	Gasket		
47	421753	1	Oil filler cap		(420292)
48	955126	3	· Screw		