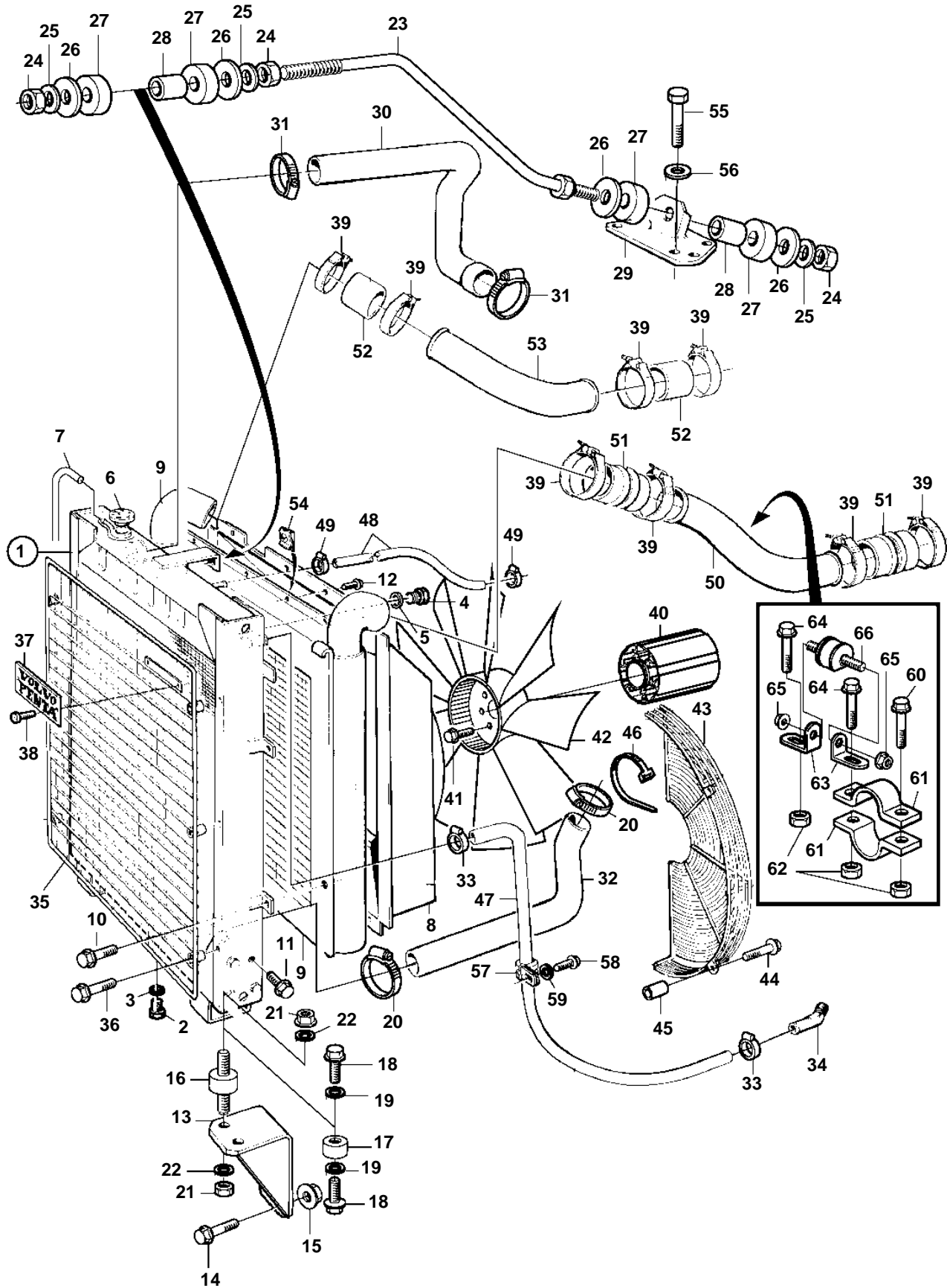


TAD1032GE



TAD1032GE

REF	PART NO.	QTY	DESCRIPTION	NOTES
1	866092	1	Radiator	
2	960630	1	• Plug	
3	969011	1	• Gasket	
4	947660	1	• Plug	
5	11994	1	• Gasket	
6	866095	1	• Pressure cap	
7	192618	X	• Hose	L=1350mm
8	3832462	1	Fan shroud	
9	866093	1	Intercooler	
10	946173	4	Flange screw	
11	973924	8	Flange screw	
12	966862	8	Screw	
13	3837162	2	Bracket	
14	946817	6	Screw	
15	971096	6	Nut	
16	863415	2	Rubber cushion	
17	866856	2	Spacer	When rubber cushions are not used for the radiator.
18	946502	4	Screw	L=20mm, When rubber cushions are not used for the radiator.
19	940280	4	Spring washer	When rubber cushions are not used for the radiator.
20	943480	2	Clamp	
21	955850	4	Nut	
22	940280	4	Spring washer	
23	865181	1	Stay	
24	955793	3	Nut	
25	941912	3	Spring washer	
26	191940	4	Washer	
27	866857	4	Rubber bushing	(252203)
28	252202	2	Bushing	
29	1660904	1	Anchorage	
30	865283	1	Hose, therm. housing	
31	943480	2	Clamp	
32	865284	1	Hose, cool. water pipe	
33	943475	2	Hose clamp	
34	942649	1	Nipple, cool. water pipe	
35	865159	1	Radiator protector	
36	947760	6	Flange screw	
37	846118	1	Emblem	
38	941651	2	Screw	
39	865575	8	Hose clamp	
40	3829422	1	Fan hub	L=350mm
41	965187	6	Screw	
42	3827492	1	Fan, pusher type	D=750mm
43	3825616	2	Fan protector	
44	966807	12	Screw	
45	848694	12	Spacer sleeve	
46	948211	X	Strip clamp	(948210)
47	944386	X	Hose	L=1000mm
48	943367	X	Hose, air venting	L=950mm
49	943470	2	Hose clamp	
50	3832626	1	Charge air pipe, turbo	
51	865127	2	Hose	
52	865128	2	Hose	
53	889582	1	Charge air pipe, induction manifold	
54		X	Clip	EARLY TYPE
55	955523	4	Screw	
56	941907	4	Spring washer	
57	952637	1	Clamp	(943717)
58	972603	1	Screw	
59	960138	1	Washer	
60	945444	2	Flange screw	
61	948645	2	Lock nut	
62	1674206	2	Cap	
63	965553	2	Bracket	

