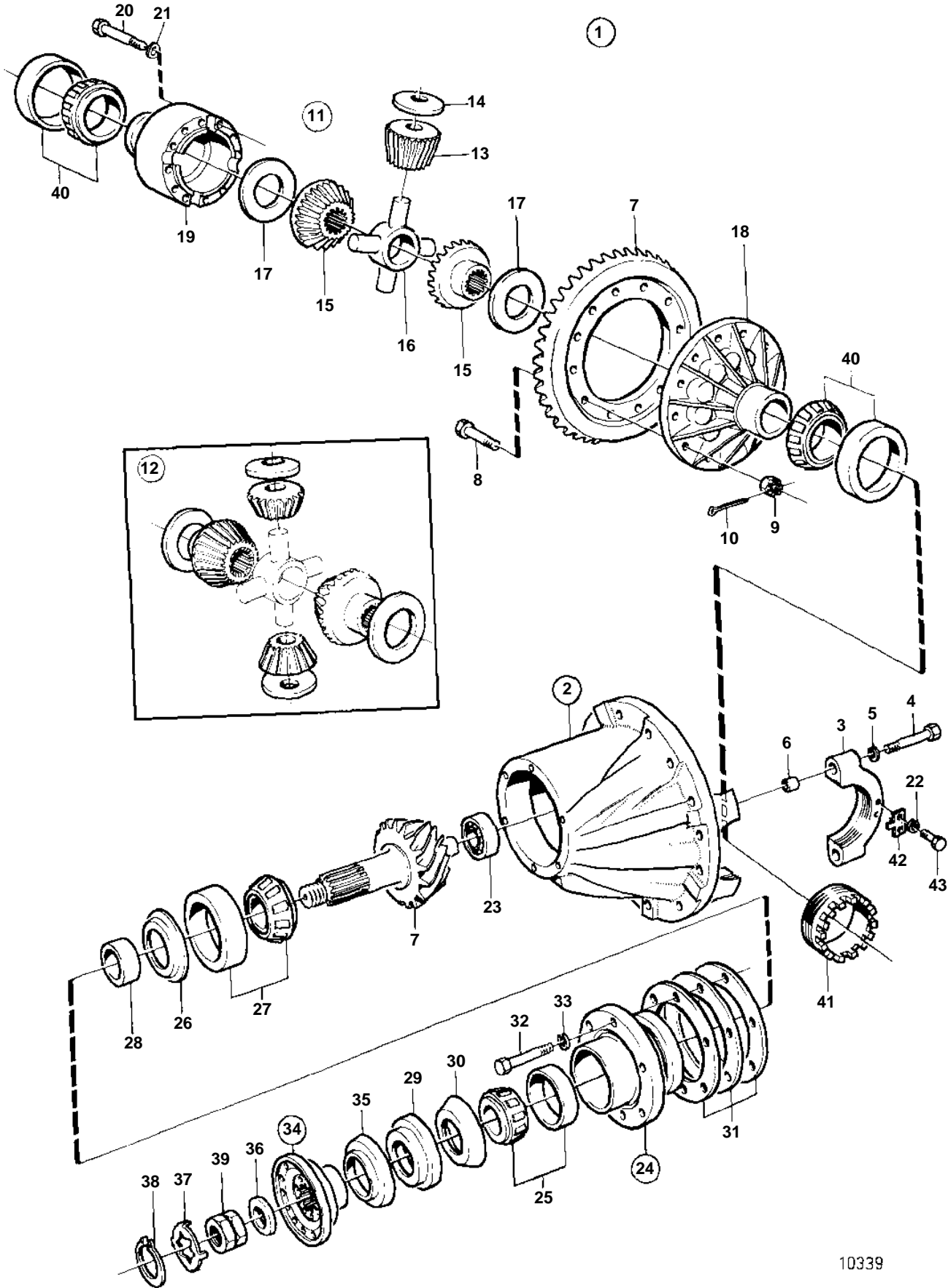


RAN280 -23520, 828660, 828662



10339

**POINT FITTING. REAR AXLE DIRECTION POINT FITTING. REAR AXLE DIRECTION**

**04F**

RAN280 -23520, 828660, 828662

REF	PART NO.	QTY	DESCRIPTION	NOTES
1	4717689	1	Differential carrier	RATIO 6,14:1
2	1522958	1	· Housing	
3		2	· · CAP	
4	104109	4	· · · Screw	
5	120173	4	· · · Washer	
6	310719	4	· · · Bushing	
7	1522477	1	· Gear set	RATIO 6,14:1
8	191394	16	· Screw	
9	191055	16	· Castle nut	
10	907849	16	· Cotter pin	
11	3094522	1	· Spare parts kit	*REBUILD KIT 3094522 MUST BE ORDERED WHEN DIFFERENTIAL GEAR KIT 273431,SPIDER 311760,DIFFERENTIAL HOUSING 1522289 AND 1522133 SHALL BE CHANGED. *THE REBUILD KIT CAN ALSO BE USED FOR UPGRADING OF &EV80B TO A &EV80C VERSION.
12	273431	1	· · · Drive gear set	*REBUILD KIT 3094522 MUST BE ORDERED WHEN DIFFERENTIAL GEAR KIT 273431,SPIDER 311760,DIFFERENTIAL HOUSING 1522289 AND 1522133 SHALL BE CHANGED. *THE REBUILD KIT CAN ALSO BE USED FOR UPGRADING OF &EV80B TO A &EV80C VERSION.
	3094269	1	· · · Drive gear set	*INCLUDED IN REBUILD KIT 3094522.
13		4	· · · · DIFFERENTIAL GEAR	*INCLUDED IN REBUILD KIT 3094522.
14	120226	4	· · · · Thrust washer, D=68MM	*REBUILD KIT 3094522 MUST BE ORDERED WHEN DIFFERENTIAL GEAR KIT 273431,SPIDER 311760,DIFFERENTIAL HOUSING 1522289 AND 1522133 SHALL BE CHANGED. *THE REBUILD KIT CAN ALSO BE USED FOR UPGRADING OF &EV80B TO A &EV80C VERSION.
	1524398	4	· · · · Thrust washer, D=84MM	*INCLUDED IN REBUILD KIT 3094522.
15		2	· · · · DIFFERENTIAL GEAR	*INCLUDED IN REBUILD KIT 3094522.
16	311760	1	· · · · Spider, D=30MMX4	*REBUILD KIT 3094522 MUST BE ORDERED WHEN DIFFERENTIAL GEAR KIT 273431,SPIDER 311760,DIFFERENTIAL HOUSING 1522289 AND 1522133 SHALL BE CHANGED. *THE REBUILD KIT CAN ALSO BE USED FOR UPGRADING OF &EV80B TO A &EV80C VERSION.
	1524395	1	· · · · Spider, D=36MMX4	*INCLUDED IN REBUILD KIT 3094522.
17	120228	2	· · · · Thrust washer, D=122MM	*REBUILD KIT 3094522 MUST BE ORDERED WHEN DIFFERENTIAL GEAR KIT 273431,SPIDER 311760,DIFFERENTIAL HOUSING 1522289 AND 1522133 SHALL BE CHANGED. *THE REBUILD KIT CAN ALSO BE USED FOR UPGRADING OF &EV80B TO A &EV80C VERSION.
	1524589	2	· · · · Thrust washer, D=124MM	*INCLUDED IN REBUILD KIT 3094522.
18	1522289	1	· · · · Housing, 16+16 HOLES	LEFT. *REBUILD KIT 3094522 MUST BE ORDERED WHEN DIFFERENTIAL GEAR KIT 273431,SPIDER 311760,DIFFERENTIAL HOUSING 1522289 AND 1522133 SHALL BE CHANGED. *THE REBUILD KIT CAN ALSO BE USED FOR UPGRADING OF &EV80B TO A &EV80C VERSION.
	1524396	1	· · · · Differential housing, 16+12 HOLES	LEFT. *INCLUDED IN REBUILD KIT 3094522.
19	1522133	1	· · · · Housing, 16 HOLES	RIGHT. *REBUILD KIT 3094522 MUST BE ORDERED WHEN DIFFERENTIAL GEAR KIT 273431,SPIDER 311760,DIFFERENTIAL HOUSING 1522289 AND 1522133 SHALL BE CHANGED. *THE REBUILD KIT CAN ALSO BE USED FOR UPGRADING OF &EV80B TO A &EV80C VERSION.
	1524397	1	· · · · Differential housing, 12 HOLES	RIGHT. *INCLUDED IN REBUILD KIT 3094522.
20	979275	16	· · · Screw, L=90MM	
	1524399	12	· · · Screw, L=160MM	*INCLUDED IN REBUILD KIT 3094522.
21	941912	12	· · · Spring washer	*INCLUDED IN REBUILD KIT 3094522.
22	941907	4	· · · Spring washer	
23	1524331	1	· · · Roller bearing	(184113)
24	1522173	1	· · · Bearing housing	
25	184633	1	· · · Bearing, COMPL	
26	384477	1	· · · Oil plate	

RAN280 -23520, 828660, 828662

REF	PART NO.	QTY	DESCRIPTION	NOTES
27	184634	1	· · Bearing, COMPL	
28	384612	X	· Spacer sleeve	TJ=5,54MM
	384613	X	· Spacer sleeve	TJ=5,56MM
	384614	X	· Spacer sleeve	TJ=5,62MM
	384615	X	· Spacer sleeve	TJ=5,68MM
	384616	X	· Spacer sleeve	TJ=5,74MM
	384617	X	· Spacer sleeve	TJ=5,76MM
29	1522895	1	· Seal	
30	943142	1	· Sealing ring	
31	384068	X	· Adjusting washer	TJ=0,10MM
	384604	X	· Adjusting washer	TJ=0,15MM
	384070	X	· Adjusting washer	TJ=0,35MM
	384072	X	· Adjusting washer	TH=1.00 MM
32	955577	6	· Screw	
33	941911	6	· Spring washer	
34	382990	1	· Companion flange	1700MM
35	382015	1	· · Dust cover	
36	941700	1	· Washer	
37	382779	1	· Lock washer	ALT
	383992	1	· Lock washer	ALT
38	914480	1	· Snap ring	
39	943805	1	· Nut	
40	183704	2	· Roller bearing, COMPL	
41	384044	1	· Adjusting device	LEFT
	1522136	1	· Nut	RIGHT
42	1522426	2	· Lock washer	
43	955294	4	· Screw	