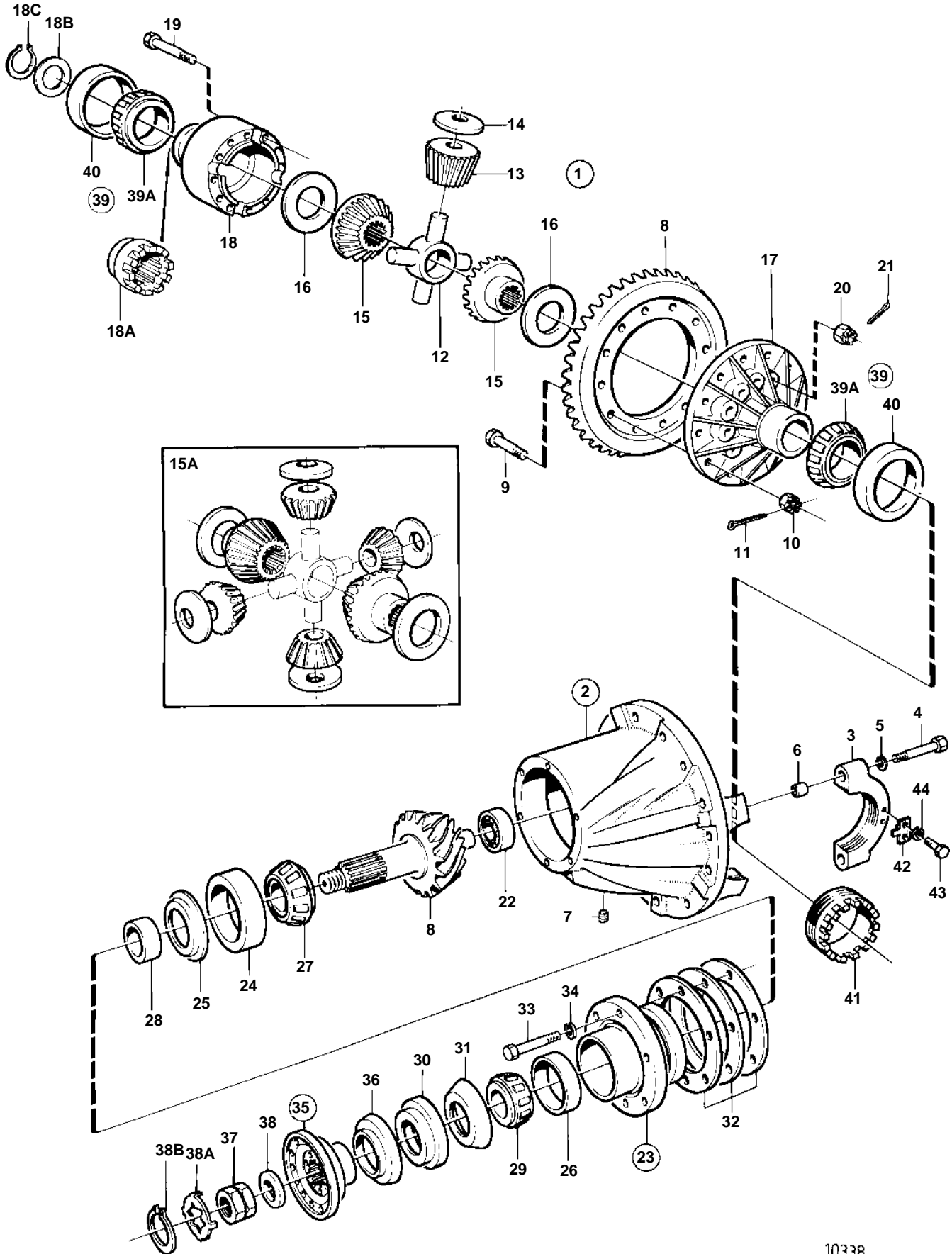


AXEL/ AXLE 255386



10338

AXEL/ AXLE 255386

REF	PART NO.	QTY	DESCRIPTION	NOTES
1	384004	1		RATIO 3,07:1
2	1522768	1	· Housing	
3		2	· · CAP	
4	104109	4	· · Screw	
5	120173	4	· · Washer	
6	310719	4	· · Bushing	
7	952075	1	· Plug	
		1	· DIFFERENTIAL	
8	384018	1		RATIO 3,07:1
9	191394	12	· · Screw	EARLY TYPE
	191394	16	· · Screw	LATE TYPE
10	191055	12	· · Castle nut	EARLY TYPE
	191055	16	· · Castle nut	LATE TYPE
11	907849	12	· · Cotter pin	EARLY TYPE
	907849	16	· · Cotter pin	LATE TYPE
12	311760	1	· · Spider	
13	335868	4	· · Differential side ge	EARLY TYPE
14	940097	4	· · Washer	
15	384038	2		EARLY TYPE
15A	273431	1	· · Drive gear set	LATE TYPE
16	120228	2	· · Thrust washer	
17	384036	1	· · Housing	LEFT EARLY TYPE
	1522791	1	· · Housing	LEFT LATE TYPE
18	384037	1		RIGHT EARLY PROD
	1522790	1	· · Housing	RIGHT LATER PROD
18A	1522134	1	· · Companion flange	LATE TYPE
18B	1522102	1	· · Ring	LATE TYPE
18C	945506	1	· · Snap ring	LATE TYPE
19	192152	12	· · Screw	EARLY TYPE
	979275	12	· · Screw	LATE TYPE
20	153003	12	· · Nut	EARLY TYPE
21	907849	12	· · Cotter pin	EARLY TYPE
22	183703	1	· Roller bearing	
23	384763	1	· Sleeve	
24		1	· · OUTER RING	ERS AV 184634
25	384477	1	· · Oil plate	
26		1	· · OUTER RING	ERS AV 184633
27		1	· ROLLER BEARING, CONE	ERS AV 184634
28	384612	X	· Spacer sleeve	TJ=5.54 MM
	384613	X	· Spacer sleeve	TJ=5.56 MM
	384614	X	· Spacer sleeve	TJ=5.62 MM
	384615	X	· Spacer sleeve	TJ=5.68 MM
	384616	X	· Spacer sleeve	TJ=5.74 MM
	384617	X	· Spacer sleeve	TJ=5.76 MM
29		1	· ROLLER BEARING, CONE	ERS AV 184633
30	1522895	1	· Seal	
31	943142	1	· Sealing ring	
32	384069	X	· Adjusting washer	TJ=0.10 MM
	384605	X	· Adjusting washer	TJ=0.15 MM
	384071	X	· Adjusting washer	TJ=0.35 MM
	384073	X	· Adjusting washer	TJ=1.00 MM
33	955577	6	· Screw	
34	941911	6	· Spring washer	
35	382992	1	· Companion flange	TYP = 1600 MM
	382990	1	· Companion flange	TYP = 1700 MM
36	382015	1	· · Dust cover	
37	943805	1	· Nut	
38	941700	1	· Washer	
38A	382779	1	· Lock washer	
38B	914480	1	· Snap ring	
39	183704	2	· Roller bearing, COMPL.	
39A	181298	2	· · Roller bearing	ERS AV 183704
40	181128	2	· · Cup	ERS AV 183704

