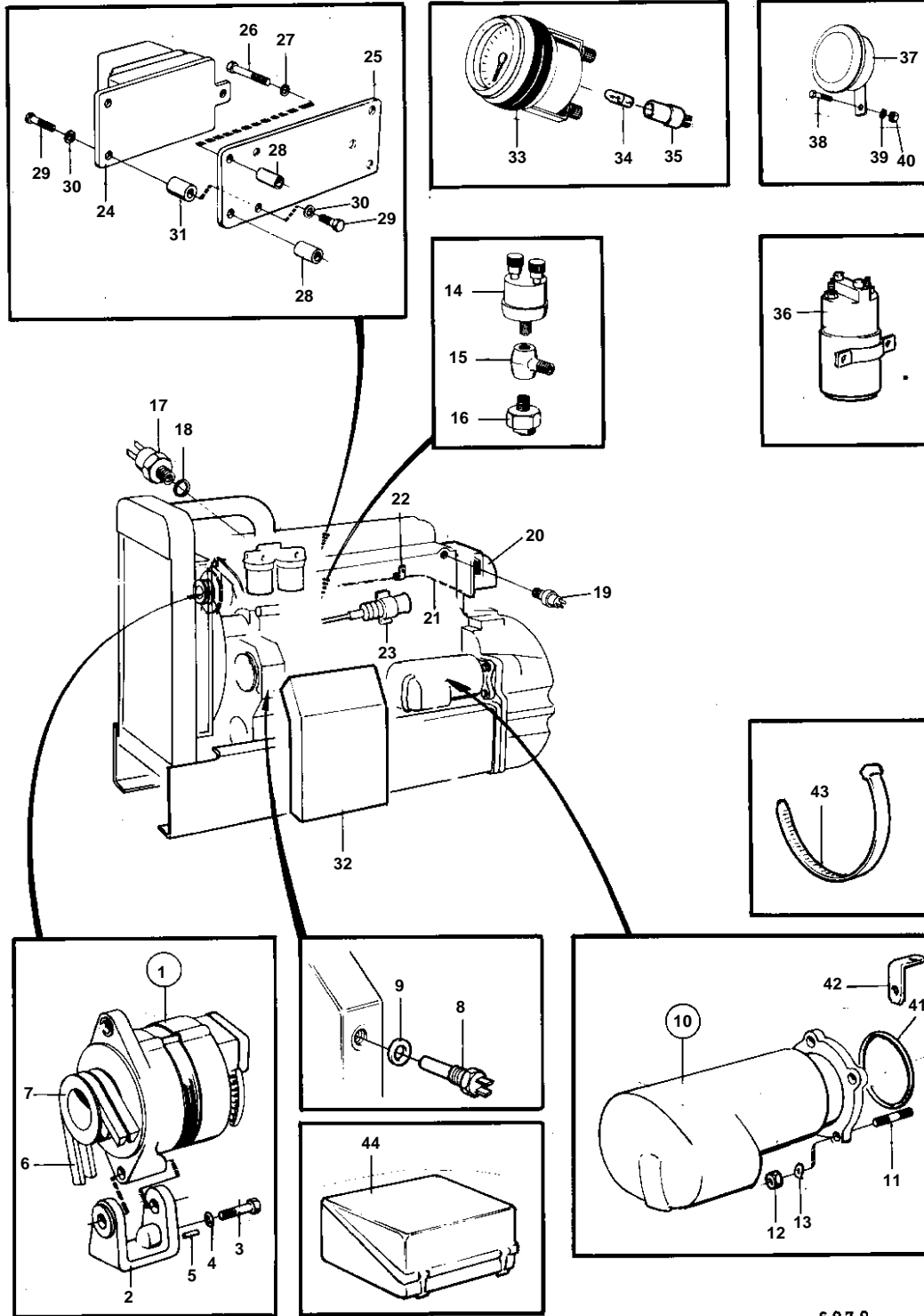


D45B PP, TD45B



6878

D45B PP, TD45B

REF	PART NO.	QTY	DESCRIPTION	SEE SEC.	NOTES
1		1	ALTERNATOR AND INSTALLATION COMP.	030-0200	
2	787023	1	Bracket		
3	955745	1	Screw		
4	941912	1	Spring washer		
5	951974	1	Spring pin		
6	966993	1	V-belt set		(958369)
7	785874	1	Pulley		
8	4780941	1	Tachometer sensor		SEE GROUP 2A
9	947624	1	Gasket		
10	4880691	1	Starter motor		MO-60313
				030-0405	
11	922028	3	Stud		
12	955848	3	Nut		
13	942336	3	Spring washer		
14	881432	1	Pressure sensor		
15	942490	1	T-nipple		
16	864284	1	Pressure monitor		(848367)
17	827150	1	Temperature sensor		
18	11996	1	Gasket		
19	822858	1	Thermo monitor		93%Z9
20		1	CONNECTING BOX	030-0150	
21	830657	1	Cable trunk		ENGINE
		X	CABLES AND TERMINALS	030-1000	
22	948211	2	Strip clamp		
23		1	STOP SOLENOID		SEE GROUP 2D
24	845972	1	Regulator		24V MO-XXXX/238478
25	830626	1	Bracket		MO-XXXX/238478
26	955525	2	Screw		MO-XXXX/238478
27	941907	2	Spring washer		MO-XXXX/238478
28	820917	2	Spacer sleeve		MO-XXXX/238478
29	956091	6	Screw		MO-XXXX/238478
30	941906	6	Spring washer		MO-XXXX/238478
31	899709	3	Vibration damper		MO-XXXX/238478
32		1	INSTRUMENT PANEL AND INSTALLATION COMP.	030-0600	
37	850420	1	Horn		
38	955535	1	Screw		
39	942336	1	Spring washer		
40	955827	1	Nut		
41	925257	1	O-ring		
43	948210	X	Strip clamp		
44		1	BATTERY BOX AND INSTALLATION COMPS.	030-0900	