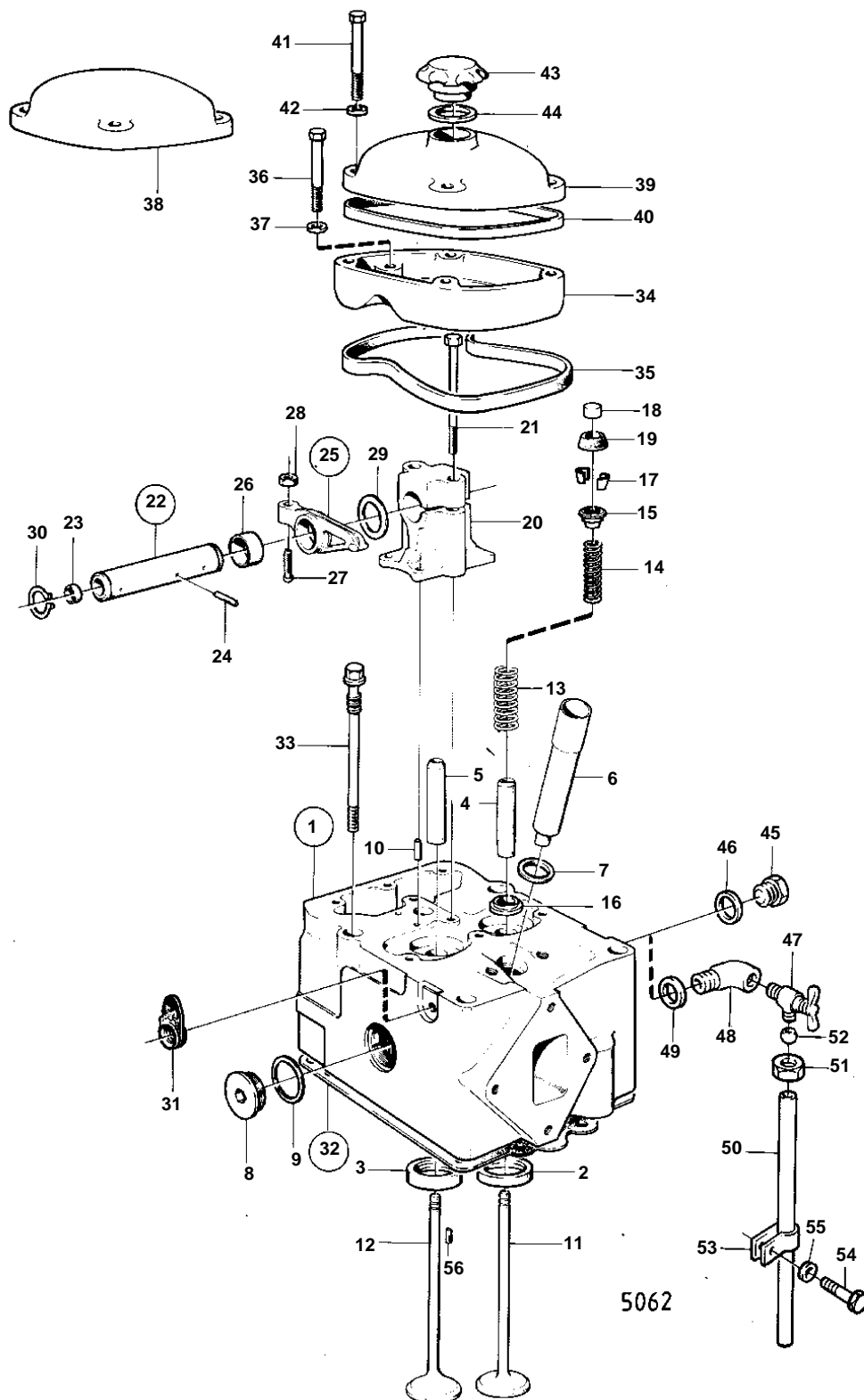


D100A,TD100A



D100A,TD100A

REF	PART NO.	QTY	DESCRIPTION	NOTES
1	467712	6	Cylinder head	MO123539/XXXXX-
	3803037	6	Cylinder head, exch	Exchange unit
2	467474	6	• Valve seat, INTAKE	STD
2	467590	6	• Valve seat, INTAKE	0.20MM O.S
3	467475	6	• Valve seat, EXHAUST	STD
3	467591	6	• Valve seat, EXHAUST	0.20MM O.S
4	422320	6	• Valve guide, INTAKE	
5	1545135	6	• Valve guide, EXHAUST	(421297)
6	467417	6	• Spray sleeve	
7	469205	6	• O-ring	IK
8	467365	12	• Plug	(467714)
9	468461	12	• Gasket	IK
10	950543	12	• Pin	
11	1545290	6	Inlet valve	(467502) MO124040/XXXX
12	467682	6	Exhaust valve	MO124040/XXXXX-
13	467334	12	Valve spring	LATE TYPE. MD21A/110S, MD21B/110S, MD21A, MD21B WITH BORG WARNER REVERSE GEAR AND MS3 REVERSE GEAR.
14	467335	12	Valve spring	LATE TYPE. MD21A/110S, MD21B/110S, MD21A, MD21B WITH BORG WARNER REVERSE GEAR AND MS3 REVERSE GEAR.
15	467506	12	Washer, UPPER	
16	467337	12	Washer, LOWER	LATE TYPE. MD21A/110S, MD21B/110S, MD21A, MD21B WITH BORG WARNER REVERSE GEAR AND MS3 REVERSE GEAR.. MO-3130871/216681.
17	468305	24	Valve collet	
18	469365	12	Valve cap	(417133)
20	422018	6	Bearing bracket	
21	422428	12	Screw	
22	422019	6	Shaft	
23	946778	12	• Cap plug	
24	950499	6	• Pin	
25	422063	12	Rocker arm	
26	422066	12	• Bushing	
27	423058	12	• Ball stud	
28	940175	12	• Nut	
29	941488	12	Washer	
30	914459	12	Lock ring	
31	423139	6	Seal	IK
32	275551	6	Gasket kit	MO-19032/XXXXX-
	422415	12	• Sealing ring	IK D = 18 MM
	422414	12	• Sealing ring	IK D = 32 MM
	422413	6	• Sealing ring	IK D = 11 MM
33	467918	24	Flange screw	(422086)
34	423142	6	Cover, LOWER	
35	423145	6	Gasket	IK
36	940159	12	Screw	
37	955894	12	Washer	
38	423143	5	Cover, upper, UPPER	
39	423144	1	Cover	

D100A,TD100A

REF	PART NO.	QTY	DESCRIPTION		NOTES
40	423146	6	Gasket	IK	
41	955530	24	Screw		
42	942580	24	Gasket		
43	420292	1	Oil filler cap		
44	940096	1	Gasket	IK	
45	941876	1	Plug		
46	18666	1	Gasket	IK	
47	820436	1	Drain cock		REPLACED BY 1EA 831656, 1EA 462623.
48	942694	1	Nipple		REPLACED BY 1EA 831656, 1EA 462623.
49	957174	1	Gasket	IK	REPLACED BY 1EA 831656, 1EA 462623.
50	821890	1	Tube		REPLACED BY 1EA 831656, 1EA 462623.
	823473	1	Tube		FOR UNLEADED GAS.
51	954357	1	Cap nut		(954350)
52	954365	1	Fitting		REPLACED BY 1EA 831656, 1EA 462623.
53	942400	1	Clamp		REPLACED BY 1EA 831656, 1EA 462623.
54	940133	1	Screw		REPLACED BY 1EA 831656, 1EA 462623.
55	940097	1	Washer		REPLACED BY 1EA 831656, 1EA 462623.
56	950543	12	Pin		