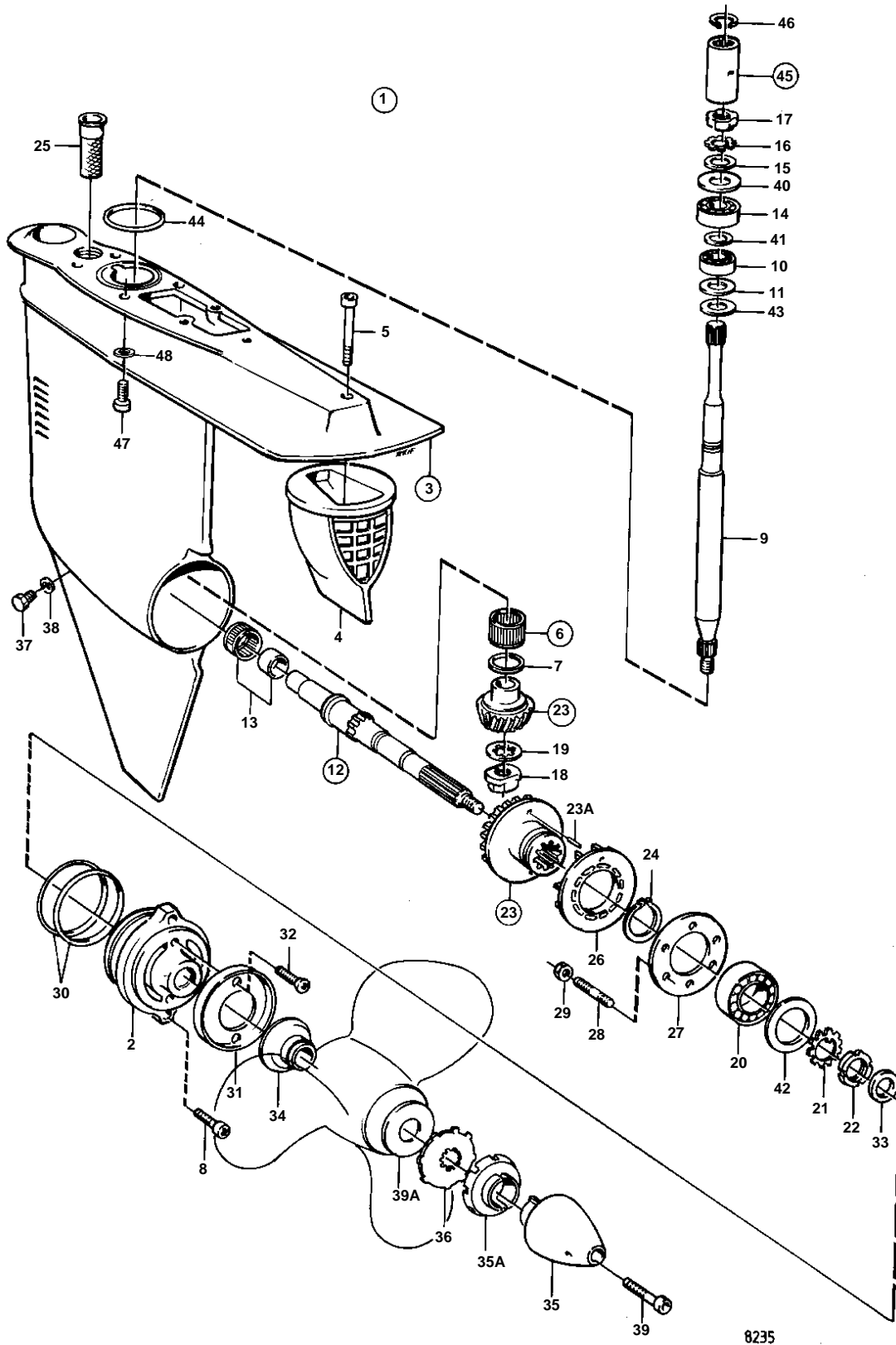


DRIVE 275,DRIVE 275A



**DRIVE 275,DRIVE 275A**

REF	PART NO.	QTY	DESCRIPTION	NOTES
1	853434	1	Gear under	
	876109	1	· Gear housing	(875433)
2	832722	1	· · Bearing housing	
3		1	· · GEAR HOUSING	
4	853431	1	· · Exhaust outlet	
5	959447	1	· · Screw	
6	183497	1	· · Needle bearing	
7		1	· · · WASHER	
8	941812	2	· · Screw	
9	832555	1	· Countershaft	
10	183374	1	· Ball bearing	
11	941832	X	· Adjusting washer	TH = 0,05 MM
	941833	X	· Adjusting washer	TH = 0,20 MM
12	875440	1	· Driveshaft	
13	183390	1	· · Needle bearing	
14	11072	1	· Roller bearing	
15	897387	1	· Spacer ring	
16	907023	1	· Lock washer	IK
17	906633	1	· Nut	
18	814164	1	· Flange nut	
19	814165	1	· Washer	IK
20	181366	1	· Ball bearing	
21	907025	1	· Lock washer	IK
22	906635	1	· Round nut	
23	832624	1	· Gear set	RATIO 1,61:1
23A	948407	X	· · Spring pin	
24	914474	1	· Lock ring	
25	814482	1	· Oil pump screen	
26	832548	1	· Pump rotor	
27	832725	1	· Washer	
28	953449	6	· Stud	
29	955825	6	· Nut	
30	925261	2	· O-ring	IK
31	875805	1	· Zinc ring kit	
32	940203	2	· · Screw	
33	897426	2	· Sealing ring	IK
34	839534	1	· Line cutter	
35	850785	1	· Propeller cone	
35A	851261	1	· Washer	
36	897367	1	· Washer	ALT
37	839354	1	· Plug	
38	955974	1	· O-ring	IK
39	850889	1	· Screw	
39A	850888	1	· Washer	
40	944522	X	· Shim	TH = 0,05 MM
	42981	X	· Shim	TH = 0,10 MM
	968057	X	· Shim	TH = 0,20 MM
	42980	X	· Shim	TH = 0,35 MM
41	944970	X	· Adjusting washer	TH = 1,60 MM
42	944561	X	· Adjusting washer	TH = 0,05 MM
	944562	X	· Adjusting washer	TH = 0,10 MM
	851767	X	· Adjusting washer	TH = 0,20 MM
43	832191	1	· Gasket	IK
44	925256	1	O-ring	IK
45	850304	1	Splined sleeve	INCLUDED IN COMPLETE AQ 275 DRIVE UNIT.
46	914508	1	· Snap ring	INCLUDED IN COMPLETE AQ 275 DRIVE UNIT.
47	941810	4	Screw	INCLUDED IN COMPLETE AQ 275 DRIVE UNIT.
48	853095	4	Washer	INCLUDED IN COMPLETE AQ 275 DRIVE UNIT.