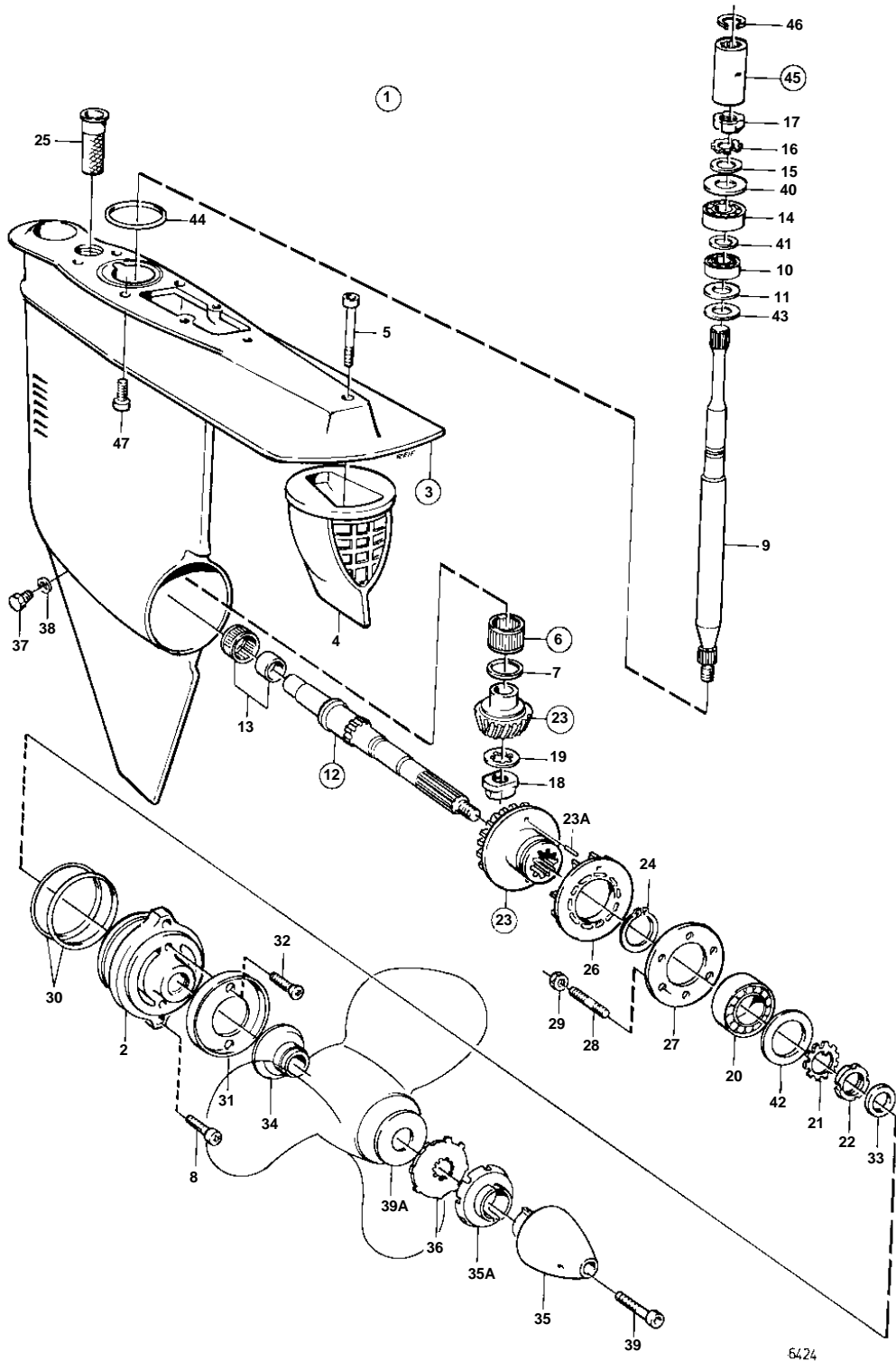


DRIVE 275,DRIVE 275A



**DRIVE 275,DRIVE 275A**

REF	PART NO.	QTY	DESCRIPTION		NOTES
1	853424	1	Gear under		
2	832722	2	· Bearing housing		
3	876109	1	· Gear housing		
4	853431	1	· Exhaust outlet		
5	959447	1	· Screw		
6	183497	1	· Needle bearing		
7		1	· · WASHER		
8	941812	2	· Screw		
9	832555	1	· Countershaft		
10	183374	1	· Ball bearing		
11	941832	X	· Adjusting washer		TH = 0,05 MM
	941833	X	· Adjusting washer		TH = 0,20 MM
12	875440	1	· Driveshaft		
13	183390	1	· · Needle bearing		
14	11072	1	· Roller bearing		
15	897387	1	· Spacer ring		
16	907023	1	· Lock washer	IK	
17	906633	1	· Nut		
18	814164	1	· Flange nut		
19	814165	1	· Washer	IK	
20	181366	1	· Ball bearing		
21	907025	1	· Lock washer	IK	
22	906635	1	· Round nut		
23	832632	1	· Gear set		RATIO 2,15:1
23A	948407	X	· · Spring pin		
24	914474	1	· Lock ring		
25	814482	1	· Oil pump screen		
26	832548	1	· Pump rotor		
27	832725	1	· Washer		
28	953449	6	· Stud		
29	955825	6	· Nut		
30	925261	2	· O-ring	IK	
31	875805	1	· Zinc ring kit		
32	940203	2	· · Screw		
33	897426	2	· Sealing ring	IK	
34	839534	1	· Line cutter		
35	854045	1	· Propeller cone		(850785)
35A	851261	1	· Washer		
36	897367	1	· Washer		ALT
37	839354	1	· Plug		
38	955974	1	· O-ring	IK	
39	850889	1	· Screw		
39A	850888	1	· Washer		
40	944522	X	· Shim		TH = 0,05 MM
	42981	X	· Shim		TH = 0,10 MM
	968057	X	· Shim		TH = 0,20 MM
	42980	X	· Shim		TH = 0,35 MM
41	944970	X	· Adjusting washer		TH = 1,60 MM
42	944561	X	· Adjusting washer		TH = 0,05 MM
	944562	X	· Adjusting washer		TH = 0,10 MM
	851767	X	· Adjusting washer		TH = 0,20 MM
43	832191	1	· Gasket	IK	
44	925256	1	O-ring	IK	INCLUDED IN COMPLETE AQ 275 DRIVE UNIT.
45	875183	1	Splined sleeve		INCLUDED IN COMPLETE AQ 275 DRIVE UNIT.
46	914508	1	· Snap ring		
47	941810	4	Screw		INCLUDED IN COMPLETE AQ 275 DRIVE UNIT.