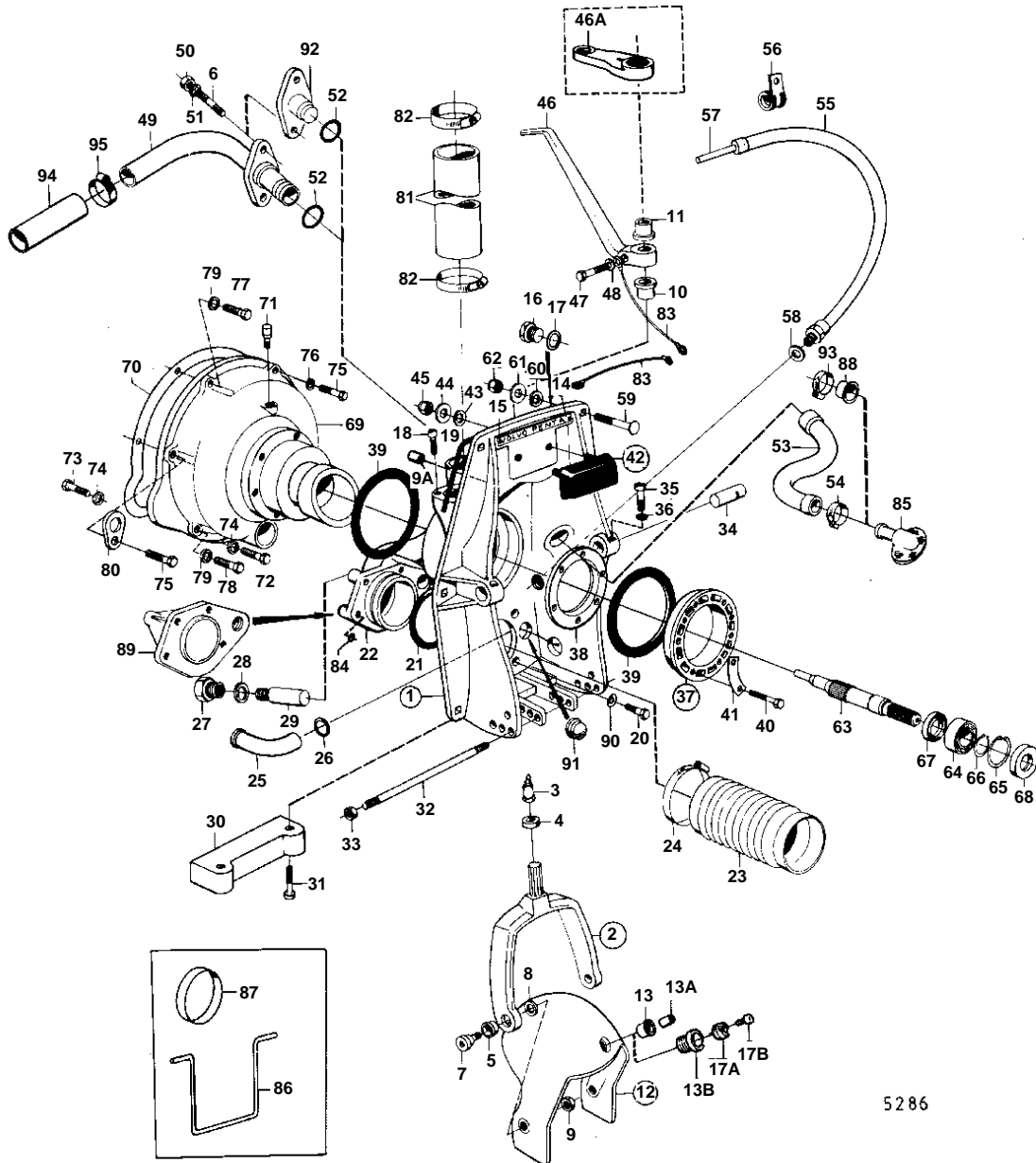


AQD21A



5286

## AQD21A

REF	PART NO.	QTY	DESCRIPTION	SEE SEC.	NOTES
1	875532	1	Clamping ring		FOR EARLY TYPE OF STEERING SYSTEM.. REPLACED BY 1EA 875671 1EA 851265 1EA 851263 2EA 941807.
	875637	1			MO-XXXX/187079. FOR LATE TYPE OF STEERING SYSTEM.. REPLACED BY 1EA 875671 1EA 851265 1EA 851263 2EA 941807.
	875671	1	Transom shield		MOXXXX/187080-
2	839377	1	• Steering yoke		MO-XXXX/80274
	839441	1	• Steering yoke		MOXXXX/80275-
3	914169	1	• • Lubricating nipple		
4	814359	1	• • Ring	IK	MO-XXXX/80274
	839195	1	• • Ring	IK	MOXXXX/80275-
			• • Bulletin 48-23	48-23-EN	Seal Ring
5	814640	2	• • Bushing		
6	941872	2	• Stud		
7	897798	2	• Shoulder screw		
8	897244	2	• Washer		
9	943152	2	• Nut		
9A	850653	1	• Bushing		SEE GROUP 6. FOR LATE TYPE OF STEERING SYSTEM.
10	897731	1	• Bushing		MO-XXXX/80274
	832651	1	• Bushing		MOXXXX/80275-
11	832586	1	• Bushing		MO-XXXX/80274
	832652	1	• Bushing		MOXXXX/80275-
12	814684	1	• Protective helmet		FOR EARLY TYPE OF STEERING SYSTEM.
	839592	1	• Protective helmet		MO-XXXX/187079. FOR LATE TYPE OF STEERING SYSTEM.
	851267	1	• Protective helmet		MOXXXX/187080-
13	814641	1	• • Bushing		FOR EARLY TYPE OF STEERING SYSTEM.. FOR 1/2"-13UNC SCREW.
	839698	1	• • Bushing		FOR LATE TYPE OF STEERING SYSTEM.. FOR M18 BOLTS.
13A	839697	1	• • Bushing		MO-XXXX/187079. FOR LATE TYPE OF STEERING SYSTEM.
13B	851262	1	• • Bushing		FOR BEARING PIN WITH 2 BOLTS.
14	832608	1	• Sign		
15	804269	2	• Drive screw		
16	897744	1	• Plug		MOXXXX/94050-
17	897745	1	• Gasket	IK	MOXXXX/94050-
17A	852705	1	Pivot pin, BEARING TAP		(851263)
					MOXXXX/187080-
17B	941807	2	Screw		REPL BY 852705
18	956568	2	Screw		MOXXXX/187080-
19	897726	1	Sealing strip	IK	SEE GROUP 9
20	959967	4	Screw		
21	925256	1	O-ring	IK	
22	897782	1	Exhaust grommet		
23	897631	1	Rubber bellows		EARLY TYPE
	850443	1	Bellows		LATE TYPE. FOR AQ DRIVE UNIT 280.
24	961675	2	Hose clamp		
25	897773	1	Hose		FOR EARLY TYPE OF STEERING SYSTEM.
	843235	1	Rubber hook		FOR LATE TYPE OF STEERING SYSTEM.
26	897836	1	Washer		FOR EARLY TYPE OF STEERING SYSTEM.
27	897744	1	Plug		
28	897745	1	Gasket	IK	
29		1	ZINC ELECTRODE		EARLY TYPE REPLACED BY 1EA 832598, 2EA 959438.
30	832598	1	Zinc electrode		
31	959438	2	Screw		
32	814301	1	Adjuster pin		
33	814357	2	Flange nut		
34	897831	2	Pivot pin		

## AQD21A

REF	PART NO.	QTY	DESCRIPTION	SEE SEC.	NOTES
35	941873	2	Screw		
36	941670	2	Washer		
37	826941	1	Clamping ring		
38	813964	1	· Spacer ring		LATE TYPE
39	813967	2	· Rubber ring		
40	191844	6	· Screw		
41	806624	3	· Striker plate		
42	875379	1	Rubber cushion		MO-XXXX/80274
	875531	1	Rubber cushion		MOXXXX/80275-
43	832565	2	· Gasket		
44	960142	2	· Washer		
45	950364	2	· Nut		
46	832587	1	Spindle arm		MO-XXXX/80274. FOR EARLY TYPE OF STEERING SYSTEM.
	839459	1	Spindle arm		MOXXXX/80275-. FOR EARLY TYPE OF STEERING SYSTEM.
46A	850488	1	Spindle arm		FOR LATE TYPE OF STEERING SYSTEM.
47	955536	1	Screw		MO-XXXX/80274
	955537	1	Screw		MOXXXX/80275-
48	940097	1	Washer		
49	826819	1	Grommet		
50	950352	2	Lock nut		
51	955893	2	Washer		
52	925063	1	O-ring	IK	
53	897599	1	Hose		
54	961668	2	Hose clamp		
55	839091	1	Hose		
56	952635	1	Clamp		
57		X	CONTROL CABLE		SEE GROUP 9
58	897745	1	Gasket	IK	
59	943426	6	Screw		
60	850418	6	O-ring		(814166)
61	190878	6	Washer		
62	940176	6	Nut		
63	832641	1	Shaft		
64	11013	1	Ball bearing		
65	914533	2	Snap ring		
66	914462	1	Lock ring		
67	946242	1	Sealing ring	IK	
68	958860	1	Sealing ring	IK	
69	832764	1	Flywheel housing		
70	826765	1	Gasket	IK	SEE GROUP 2A
71	180019	1	Lubricator		
72	940142	2	Screw		L = 30 MM
73	955297	1	Screw		L = 25 MM
74	955894	3	Washer		
75	955318	1	Screw		S.B L = 30 MM
	955319	1	Screw		P L = 35 MM
76	955895	1	Washer		
77	959667	1	Screw		L = 50 MM SEE GROUP 2A
78	959671	2	Screw		L = 70 MM SEE GROUP 2A
79	940280	3	Spring washer		SEE GROUP 2A
80		1	LIFT EYE		SEE GROUP 2A
81	952980	X	Rubber hose		L = 170 MM SEE GROUP 2B
82	943480	4	Clamp		SEE GROUP 2B
83		X	CABLES AND CABLE TERMINALS		SEE GROUP 3
84	925055	4	O-ring		
85	851766	1	Hose connection		SEE GROUP 4C
86	897824	1	Conveyer stop		FOR TRANSPORT.
87	944738	1	Plastic plug		FOR TRANSPORT.

