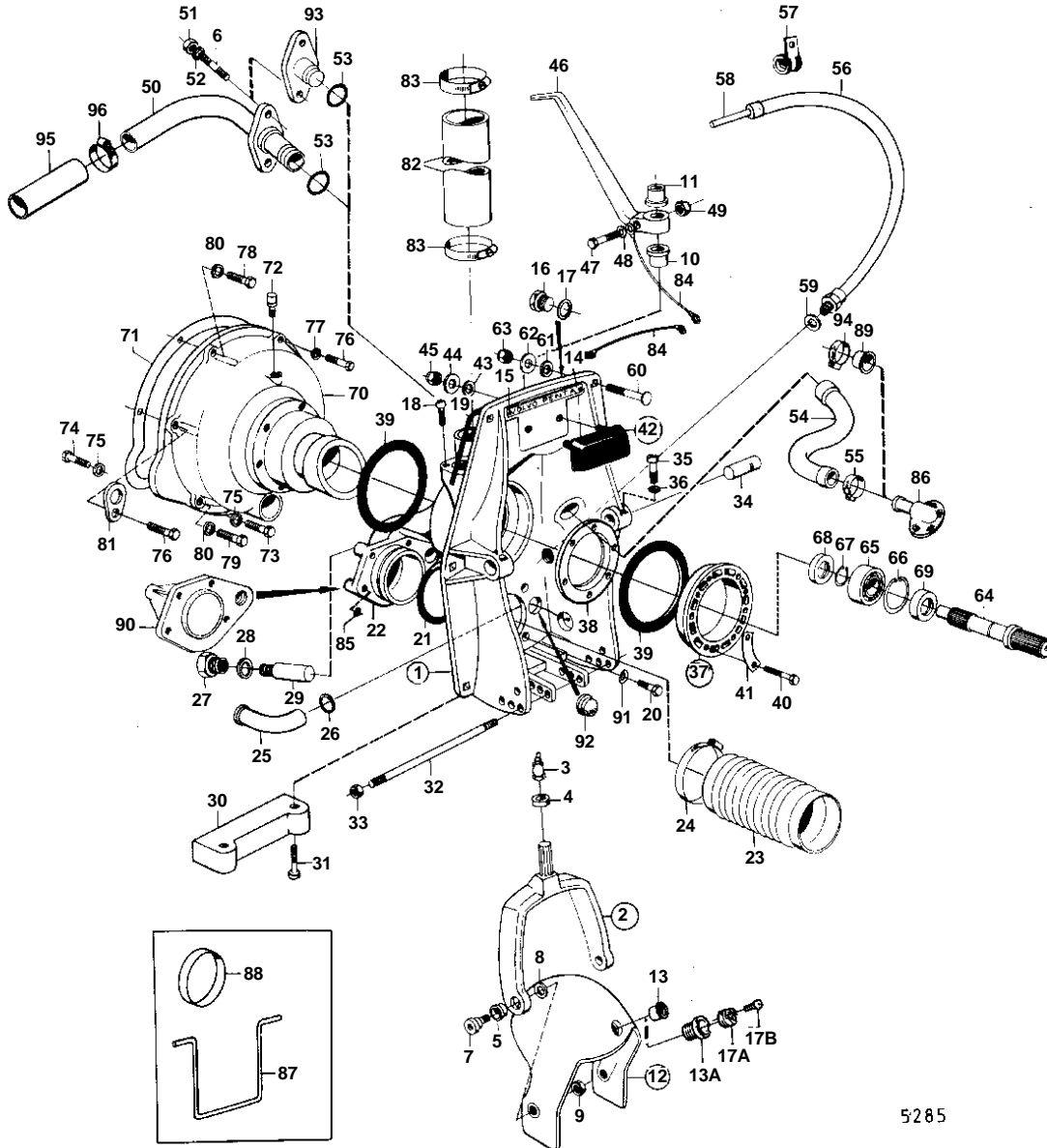


AQD21A



5285

## AQD21A

REF	PART NO.	QTY	DESCRIPTION		NOTES
1		1	SHIELD		REPLACED BY 1EA 875671, 1EA 851265, 1EA 851263, 2EA 941807, 1EA 875531, 1EA 839459, 1EA 940097, 1EA 955537.
	875532	1	Clamping ring		MOXXXX/80275-. FOR STEERING YOKE AND LEVER WITH SPLINES.. REPLACED BY 1EA 875671 1EA 851265 1EA 851263 2EA 941807.
					-XXXX/187079
	875671	1	Transom shield		MOXXXX/187080-
2		1	• STEERING YOKE		EARLY TYPE STEERING YOKE AND LEVER WITHOUT SPLINES, REPLACED BY 1EA 839377, 1EA 832587, 1EA 832586, 1EA 940162
	839377	1	• Steering yoke		FOR STEERING YOKE AND LEVER WITH SPLINES.
3	914169	1	• • Lubricating nipple		
4	814359	1	• • Ring	IK	
5	897243	2	• • Bushing		EARLY TYPE
	814640	2	• • Bushing		LATE TYPE
6	941872	2	• Stud		
7	897798	2	• Shoulder screw		
8	897244	2	• Washer		
9	943152	2	• Nut		
10	897731	2	• Bushing		EARLY TYPE STEERING YOKE AND LEVER WITHOUT SPLINES, REPLACED BY 1EA 839377, 1EA 832587, 1EA 832586, 1EA 940162
	897731	1	• Bushing		LOWER. FOR STEERING YOKE AND LEVER WITH SPLINES.
11	832586	1	• Bushing		UPPER. FOR STEERING YOKE AND LEVER WITH SPLINES.
12	814684	1	• Protective helmet		MO-XXXX/187079
	851267	1	• Protective helmet		MOXXXX/187080-
13	897461	1	• • Bushing		FOR 1/2"- 13UNC SCREW.
13A	851262	1	• • Bushing		FOR BEARING PIN WITH 2 BOLTS.
14	832608	1	• Sign		
15	804269	2	• Drive screw		
16	897744	1	• Plug		MOXXXX/94050-
17	897745	1	• Gasket	IK	MOXXXX/94050-
17A	852705	1	Pivot pin, BEARING TAP		(851263)
					MOXXXX/187080-
					REPL BY 852705
17B	941807	2	Screw		MOXXXX/187080-
18	956568	2	Screw		SEE GROUP 9
19	897726	1	Sealing strip	IK	
20	959967	4	Screw		
21	925256	1	O-ring	IK	
22	897782	1	Exhaust grommet		
23	897631	1	Rubber bellows		
24	961675	2	Hose clamp		
25	897773	1	Hose		
26	897836	1	Washer		
27	897744	1	Plug		
28	897745	1	Gasket	IK	
29		1	ZINC ELECTRODE		EARLY TYPE REPLACED BY 1EA 832598, 2EA 959438.
30	832598	1	Zinc electrode		
31	959438	2	Screw		
32	814301	1	Adjuster pin		
33	814357	2	Flange nut		
34	897831	2	Pivot pin		
35	941873	2	Screw		
36	941670	2	Washer		
37	826941	1	Clamping ring		
38	813964	1	• Spacer ring		LATE TYPE
39	813967	2	• Rubber ring		
40	191844	6	• Screw		
41	806624	3	• Striker plate		
42	875379	1	Rubber cushion		
43	832565	2	• Gasket		
44	960142	2	• Washer		

## AQD21A

REF	PART NO.	QTY	DESCRIPTION		NOTES
45	950364	2	· Nut		
46	897724	1	Spindle arm		EARLY TYPE STEERING YOKE AND LEVER WITH SPLINES.
	832587	1	Spindle arm		FOR STEERING YOKE AND LEVER WITH SPLINES.
47	955712	1	Screw		EARLY TYPE STEERING YOKE AND LEVER WITH SPLINES.
	940162	1	Screw		FOR STEERING YOKE AND LEVER WITH SPLINES.
	955536	1	Screw		LATE TYPE WITH GROUND CABLE ON STEERING LEVER.
48	940097	1	Washer		LATE TYPE WITH GROUND CABLE ON STEERING LEVER.
49	950386	1	Nut		EARLY TYPE STEERING YOKE AND LEVER WITH SPLINES.
50	826819	1	Grommet		
51	950352	2	Lock nut		
52	955893	2	Washer		
53	925063	1	O-ring	IK	
54	897599	1	Hose		
55	961668	2	Hose clamp		
56	839091	1	Hose		
57	952635	1	Clamp		
58		X	CONTROL CABLE		SEE GROUP 9
59	897745	1	Gasket	IK	
60	943426	6	Screw		
61	850418	6	O-ring		(814166)
62	190878	6	Washer		
63	940176	6	Nut		
64	897621	1	Shaft		
65	11012	1	Ball bearing		
66	914529	1	Lock ring		
67	914459	1	Lock ring		
68	804207	1	Sealing ring	IK	
69	946242	1	Sealing ring	IK	
70	826807	1	Flywheel housing		
71	826765	1	Gasket	IK	SEE GROUP 2A
72	180019	1	Lubricator		
73	940142	2	Screw		L = 30 MM
74	955297	1	Screw		L = 25 MM
75	955894	3	Washer		
76	955318	1	Screw		S.B L = 30 MM
	955319	1	Screw		P L = 35 MM
77	955895	1	Washer		
78	959667	1	Screw		L = 50 MM SEE GROUP 2A
79	959671	2	Screw		L = 70 MM SEE GROUP 2A
80	940280	3	Spring washer		SEE GROUP 2A
81		1	LIFT EYE		SEE GROUP 2A
82	952980	X	Rubber hose		L = 170 MM SEE GROUP 2B
83	943480	4	Clamp		SEE GROUP 2B
84		X	CABLES AND CABLE TERMINALS		SEE GROUP 3
85	925055	4	O-ring		
86	851766	1	Hose connection		SEE GROUP 4C
87	897824	1	Conveyer stop		FOR TRANSPORT.
88	944738	1	Plastic plug		FOR TRANSPORT.
89	827083	1	Plug		SEE GROUP 9. USED WHEN SEPARATE EXHAUST OUTLET AND WATER INTAKE IS INSTALLED.
90	814113	1	Seal flange		SEE GROUP 9. USED WHEN SEPARATE EXHAUST OUTLET AND WATER INTAKE IS INSTALLED.
91	942336	4	Spring washer		SEE GROUP 9. USED WHEN SEPARATE EXHAUST OUTLET AND WATER INTAKE IS INSTALLED.
92	814473	1	Rubber plug		SEE GROUP 9. USED WHEN SEPARATE EXHAUST OUTLET AND WATER INTAKE IS INSTALLED.
93	831237	1	Seal flange		SEE GROUP 9. USED WHEN SEPARATE EXHAUST OUTLET AND WATER INTAKE IS INSTALLED.
94	961669	1	Hose clamp		SEE GROUP 9. USED WHEN SEPARATE EXHAUST OUTLET AND WATER INTAKE IS INSTALLED.
95	941799	X	Hose		L = 450 MM

AQD21A

REF	PART NO.	QTY	DESCRIPTION	NOTES
96	961669	2	Hose clamp	
	875192	1	Gasket kit	SEE GROUP 10