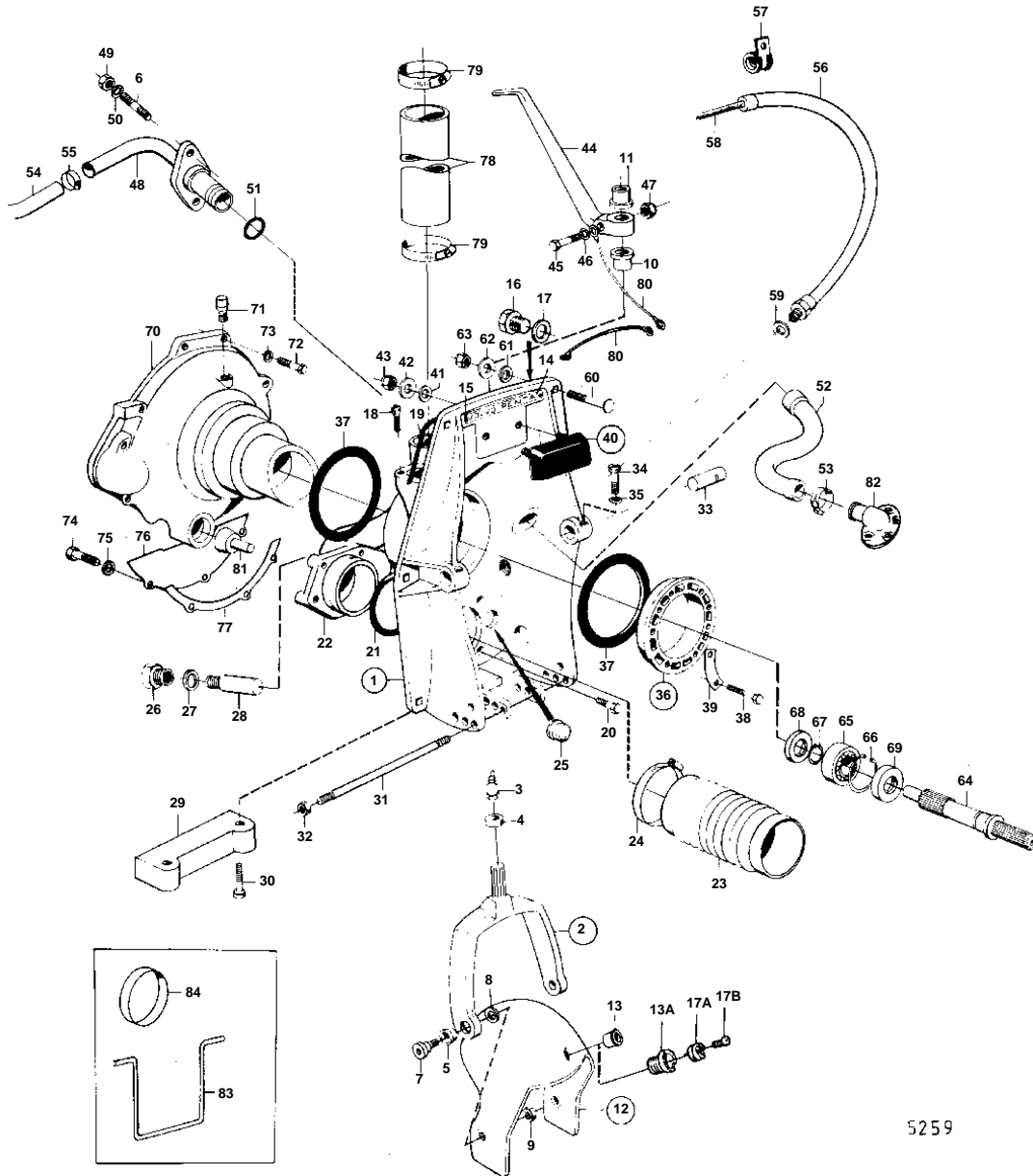


AQ130A,AQ130B,AQ130C



5259

AQ130A,AQ130B,AQ130C

REF	PART NO.	QTY	DESCRIPTION	NOTES
1		1	SHIELD	REPLACED BY 1EA 875671, 1EA 851265, 1EA 851263, 2EA 941807, 1EA 875531, 1EA 839459, 1EA 940097, 1EA 955537.
	875532	1	Clamping ring	MOXXXX/80275-. FOR STEERING YOKE AND LEVER WITH SPLINES.. REPLACED BY 1EA 875671 1EA 851265 1EA 851263 2EA 941807.
				-XXXX/187079
	875671	1	Transom shield	MOXXXX/187080-
2		1	· STEERING YOKE	EARLY TYPE STEERING YOKE AND LEVER WITHOUT SPLINES, REPLACED BY 1EA 839377, 1EA 832587, 1EA 832586, 1EA 940162
	839377	1	· Steering yoke	FOR STEERING YOKE AND LEVER WITH SPLINES.
3	914169	1	· · Lubricating nipple	
4	814359	1	· · Ring	IK
5	897243	2	· · Bushing	EARLY TYPE
	814640	2	· · Bushing	LATE TYPE
6	941872	2	· Stud	
7	897798	2	· Shoulder screw	
8	897244	2	· Washer	
9	943152	2	· Nut	
10	897731	2	· Bushing	EARLY TYPE STEERING YOKE AND LEVER WITHOUT SPLINES, REPLACED BY 1EA 839377, 1EA 832587, 1EA 832586, 1EA 940162
	897731	1	· Bushing	LOWER. FOR STEERING YOKE AND LEVER WITH SPLINES.
11	832586	1	· Bushing	UPPER. FOR STEERING YOKE AND LEVER WITH SPLINES.
12	814684	1	· Protective helmet	MO-XXXX/187079
	851267	1	· Protective helmet	MOXXXX/187080-
13	897461	1	· · Bushing	FOR 1/2"- 13UNC SCREW.
13A	851262	1	· · Bushing	FOR BEARING PIN WITH 2 BOLTS.
14	832608	1	· Sign	
15	804269	2	· Drive screw	
16	897744	1	· Plug	MOXXXX/94050-
17	897745	1	· Gasket	IK MOXXXX/94050-
17A	852705	1	Pivot pin, BEARING TAP	(851263)
				MOXXXX/187080-
				REPL BY 852705
17B	941807	2	Screw	MOXXXX/187080-
18	956568	2	Screw	SEE GROUP 9
19	897726	1	Sealing strip	IK
20	959967	4	Screw	
21	925256	1	O-ring	IK
22	897780	1	Exhaust grommet	
23	897631	1	Rubber bellows	
24	961675	2	Hose clamp	
25	814473	1	Rubber plug	
26	897744	1	Plug	
27	897745	1	Gasket	IK
28		1	ZINC ELECTRODE	EARLY TYPE REPLACED BY 1EA 832598, 2EA 959438.
29	832598	1	Zinc electrode	
30	959438	2	Screw	
31	814301	1	Adjuster pin	
32	814357	2	Flange nut	
33	897831	2	Pivot pin	
34	941873	2	Screw	
35	941670	2	Washer	
36	806310	1	Clamping ring	
37	804190	2	· Rubber ring	
38	191844	6	· Screw	
39	806624	3	· Striker plate	
40	875379	1	Rubber cushion	
41	832565	2	· Gasket	
42	960142	2	· Washer	
43	950364	2	· Nut	
44	897724	1	Spindle arm	EARLY TYPE STEERING YOKE AND LEVER WITH SPLINES.

7736850 - 04A - 04A-0700

5259

Upd: 22 NOV 2005

AQ115, BB115, MB20, AQ130, AQ165, BB165, AQ170, BB170, AQD21A, MD21A

**VOLVO**  
**PENTA**

## AQ130A,AQ130B,AQ130C

REF	PART NO.	QTY	DESCRIPTION	NOTES
44	832587	1	Spindle arm	FOR STEERING YOKE AND LEVER WITH SPLINES.
45	955712	1	Screw	EARLY TYPE STEERING YOKE AND LEVER WITH SPLINES.
	940162	1	Screw	FOR STEERING YOKE AND LEVER WITH SPLINES.
	955536	1	Screw	LATE TYPE WITH GROUND CABLE ON STEERING LEVER.
46	940097	1	Washer	LATE TYPE WITH GROUND CABLE ON STEERING LEVER.
47	950386	1	Nut	EARLY TYPE STEERING YOKE AND LEVER WITH SPLINES.
48	824572	1	Tube	SEE GROUP 2B
49	950352	2	Lock nut	
50	955893	2	Washer	
51	925063	1	O-ring	IK
52	897599	1	Hose	
53	961668	2	Hose clamp	
54	943368	X	Rubber hose	SEE GROUP 2B
55	961666	2	Hose clamp	SEE GROUP 2B
56	839091	1	Hose	
57	952635	1	Clamp	
58		X	CONTROL CABLE	SEE GROUP 9
59	897745	1	Gasket	IK
60	943426	6	Screw	
61	850418	6	O-ring	(814166)
62	190878	6	Washer	
63	940176	6	Nut	
64	897620	1	Shaft	
65	11012	1	Ball bearing	
66	914529	1	Lock ring	
67	914459	1	Lock ring	
68	804207	1	Sealing ring	IK
69	946242	1	Sealing ring	IK
70	897564	1	Flywheel housing	
71	180019	1	Lubricator	
72	940160	4	Screw	7/16" - 14 UNC
73	941909	4	Spring washer	I.D = 11,5 MM
74	955523	3	Screw	
75	941907	3	Spring washer	
76	834568	1	Cover plate	
77		1	GASKET	MO-XXXX/111481
78	952980	X	Rubber hose	L = 170 MM SEE GROUP 2B
79	943480	4	Clamp	(951797) SEE GROUP 2B
80		X	CABLES AND CABLE TERMINALS	SEE GROUP 3
81	804210	1	Rubber cushion	
82	851766	1	Hose connection	SEE GROUP 4C
83	897824	1	Conveyer stop	FOR TRANSPORT.
84	944738	1	Plastic plug	FOR TRANSPORT.
	875192	1	Gasket kit	SEE GROUP 10