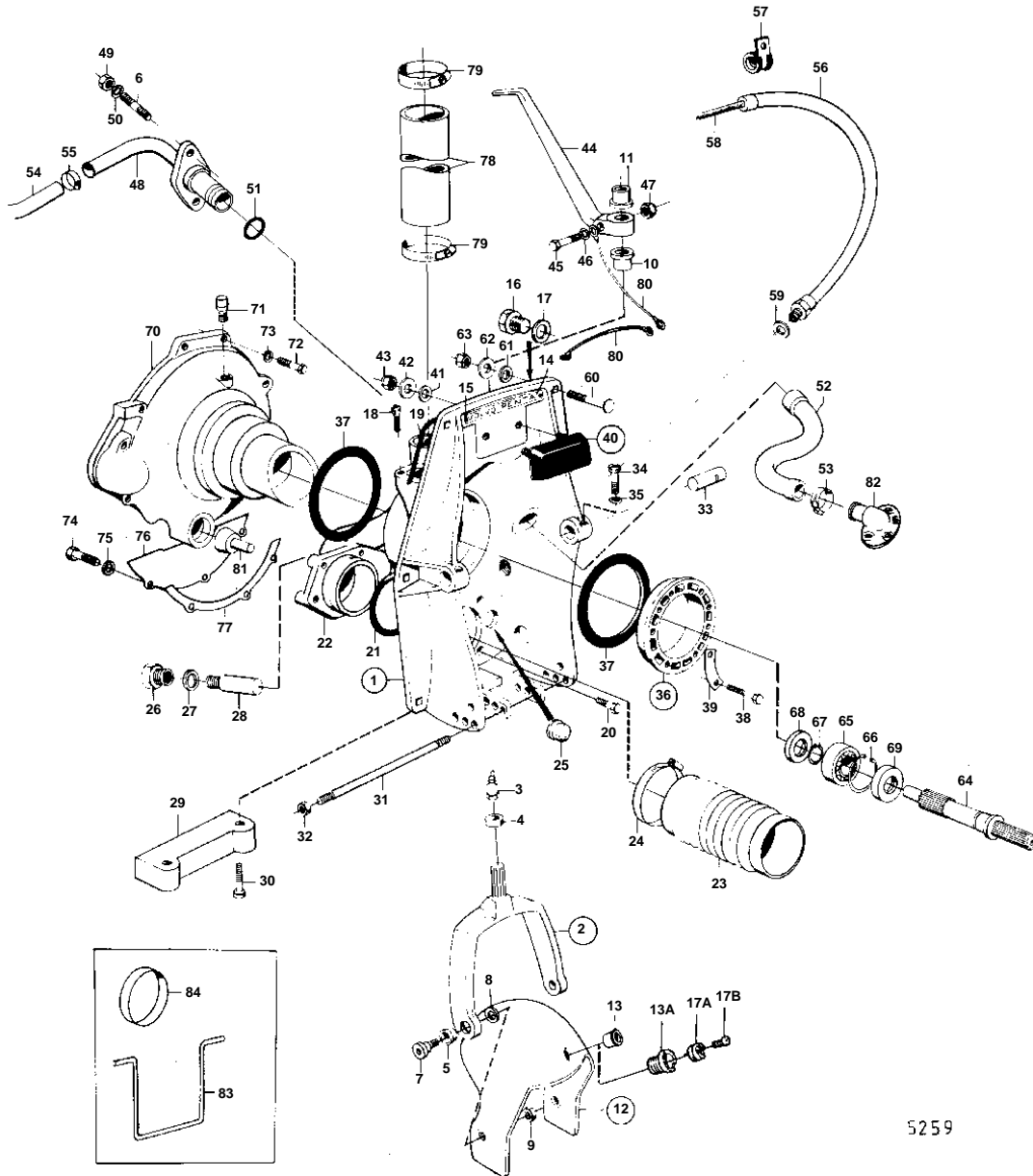


AQ130A, AQ130B, AQ130C



5259

AQ130A, AQ130B, AQ130C

REF	PART NO.	QTY	DESCRIPTION	NOTES
1		1	SHIELD	REPLACED BY 1EA 875671, 1EA 851265, 1EA 851263, 2EA 941807, 1EA 875531, 1EA 839459, 1EA 940097, 1EA 955537.
	875532	1	Tensioning ring	FOR STEERING YOKE AND LEVER WITH SPLINES., REPLACED BY 1EA 875671 1EA 851265 1EA 851263 2EA 941807., MOXXXX/80275-XXXX/187079
	875671	1	Shield	MOXXXX/187080-
2		1	• STEERING YOKE	EARLY TYPE STEERING YOKE AND LEVER WITHOUT SPLINES, REPLACED BY 1EA 839377, 1EA 832587, 1EA 832586, 1EA 940162
	839377	1	• Steering yoke	FOR STEERING YOKE AND LEVER WITH SPLINES.
3	914169	1	• • Lubricating nipple	
4	814359	1	• • Ring	
5		2	• • Bushing	EARLY TYPE
	814640	2	• • Bushing	LATE TYPE
6	941872	2	• Stud	
7	897798	2	• Shoulder screw	
8	897244	2	• Washer	
9	943152	2	• Nut	
10	897731	2	• Bushing	EARLY TYPE STEERING YOKE AND LEVER WITHOUT SPLINES, REPLACED BY 1EA 839377, 1EA 832587, 1EA 832586, 1EA 940162
	897731	1	• Bushing	FOR STEERING YOKE AND LEVER WITH SPLINES., LOWER
11		1	• Bushing	FOR STEERING YOKE AND LEVER WITH SPLINES., UPPER
12	814684	1	• Protective helmet	MO-XXXX/187079
	851267	1	• Protective helmet	MOXXXX/187080-
13		1	• • Bushing	FOR 1/2"- 13UNC SCREW.
13A	851262	1	• • Bushing	FOR BEARING PIN WITH 2 BOLTS.
14	832608	1	• Plate	
15	804269	2	• Drive screw	
16		1	• Plug	MOXXXX/94050-
17	897745	1	• Gasket	MOXXXX/94050-
17A	852705	1	Pivot pin, BEARING TAP	(851263)
17				MOXXXX/187080-
				REPL BY 852705
17B	941807	2	Hex. socket screw	MOXXXX/187080-
18	956568	2	Hex. socket screw	SEE GROUP 9
19	897726	1	Sealing strip	
20	959967	4	Hexagon screw	
21	925256	1	O-ring	
22	897780	1	Exhaust grommet	
23	897631	1	Exhaust bellows	
24	961675	2	Hose clamp	
25	814473	1	Rubber plug	
26		1	Plug	
27	897745	1	Gasket	
28		1	ZINC ELECTRODE	EARLY TYPE REPLACED BY 1EA 832598, 2EA 959438.
29	832598	1	Zinc anode	
30	959438	2	Hex. socket screw	
31	814301	1	Adjusting pin	
32	814357	2	Flange nut	
33	897831	2	Pivot pin	
34	941873	2	Hex. socket screw	
35	941670	2	Washer	
36	806310	1	Mounting kit	
37	804190	2	• Rubber ring	
38	191844	6	• Hexagon screw	
39	806624	3	• Striker plate	
40	875379	1	Rubber cushion	
41	832565	2	• Gasket	
42	960142	2	• Washer	
43	950364	2	• Lock nut	
44		1	Spindle arm	EARLY TYPE STEERING YOKE AND LEVER WITH SPLINES.
		1	Spindle arm	FOR STEERING YOKE AND LEVER WITH SPLINES.
45		1	Screw	EARLY TYPE STEERING YOKE AND LEVER WITH SPLINES.
	940162	1	Hexagon screw	FOR STEERING YOKE AND LEVER WITH SPLINES.

AQ130A, AQ130B, AQ130C

REF	PART NO.	QTY	DESCRIPTION	NOTES
45	955536	1	Hexagon screw	LATE TYPE WITH GROUND CABLE ON STEERING LEVER.
46	940097	1	Washer	LATE TYPE WITH GROUND CABLE ON STEERING LEVER.
47	950386	1	Lock nut	EARLY TYPE STEERING YOKE AND LEVER WITH SPLINES.
48		1	Grommet	SEE GROUP 2B
49	950352	2	Lock nut	
50	955893	2	Washer	
51	925063	1	O-ring	
52		1	Hose	
53	961668	2	Hose clamp	
54	943368	X	Rubber hose	SEE GROUP 2B
55	961666	2	Hose clamp	SEE GROUP 2B
56	839091	1	Protecting hose	
57	952635	1	Clamp	
58		X	CONTROL CABLE	SEE GROUP 9
59	897745	1	Gasket	
60	943426	6	Screw	
61	850418	6	O-ring	(814166)
62	190878	6	Washer	
63	940176	6	Hexagon nut	
64	897620	1	Spindle	
65	11012	1	Ball bearing	
66	914529	1	Snap ring	
67	914459	1	Snap ring	
68	804207	1	Sealing ring	
69	946242	1	Sealing ring	
70		1	Flywheel housing	
71		1	Lubricator	
72	940160	4	Hexagon screw	7/16" - 14 UNC
73	941909	4	Spring washer	I.D = 11,5 MM
74	955523	3	Hexagon screw	
75	941907	3	Spring washer	
76		1	Cover plate	
77		1	Gasket	MO-XXXX/111481
78	952980	X	Hose	L = 170 MM SEE GROUP 2B
79	943480	4	Hose clamp	(951797) SEE GROUP 2B
80		X	CABLES AND CABLE TERMINALS	SEE GROUP 3
81	804210	1	Rubber cushion	
82	851766	1	Hose connection	SEE GROUP 4C
83	897824	1	Transport lock	FOR TRANSPORT.
84	944738	1	Plug	FOR TRANSPORT.
	875192	1	Gasket kit	SEE GROUP 10