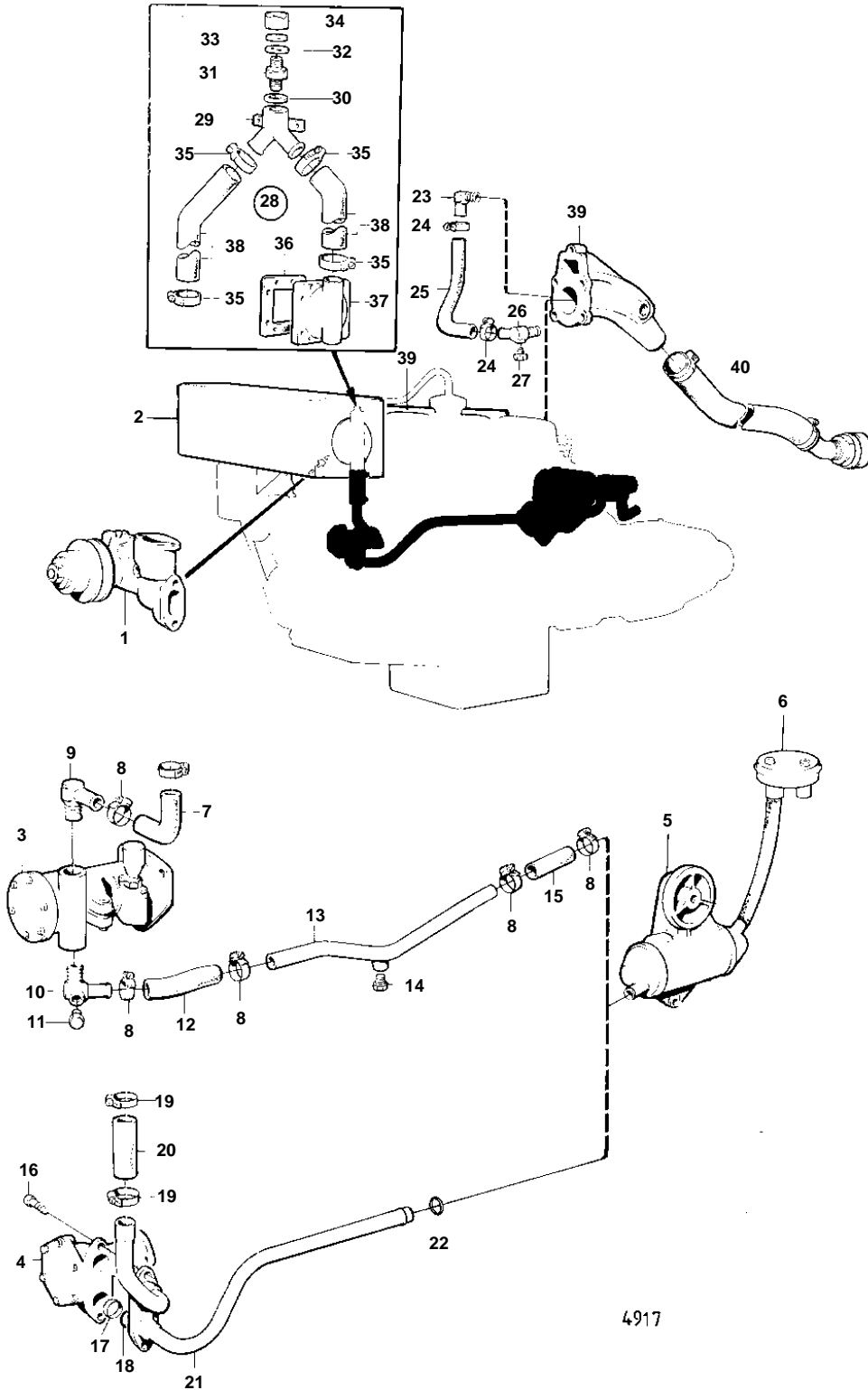


MD21A



MD21A

REF	PART NO.	QTY	DESCRIPTION	SEE SEC.	NOTES
1		1	CIRKULATION PUMP AND INSTALLATION COMPONENTS	12801	
2		1	HEAT EXCHANGER WITH THERMOSTAT AND INSTALLATION COMPONENTS	12799	
		1	HEAT EXCHANGER WITH THERMOSTAT AND INSTALLATION COMPONENTS	12800	
3		1	SEA WATER PUMP AND INSTALLATION COMPONENTS	12802	
4		1	SEA WATER PUMP AND INSTALLATION COMPONENTS	12776	
5		1	OIL COOLER WITH INSTALLATION COMPONENTS	12798	
6		1	SEA WATER FILTER AND INSTALLATION COMPONENTS	12798	
7	826224	1	Hose		MO-XXXX/103386
8	943475	6	Hose clamp, CLAMP		(951791)
9		1	Elbow nipple		MO-XXXX/103386
10		1	Hose nipple		MO-XXXX/103386
11	192134	1	Plug		MO-XXXX/103386
12		X	Rubber hose		MO-XXXX/103386 L = 120 MM
13		1	Tube		MO-XXXX/103386
14	180759	1	Plug		MO-XXXX/103386
15		X	Rubber hose		MO-XXXX/103386 L = 80 MM
16	959437	2	Hex. socket screw		MOXXXX/103387-
17	423187	2	Ring retainer		MOXXXX/103387-
18	831617	2	Sealing ring		MOXXXX/103387-
19	943475	2	Hose clamp		(951791)
20		X	Rubber hose		MOXXXX/103387- L = 60 MM
21		1	Coolant pipe		MOXXXX/103387-
22	418412	1	Sealing ring, RING	12798	
23		1	Elbow nipple		
28		1	Tube		REPL BY 828534
29		1	· UNION PIPE		
30	957175	1	· Gasket		
31		1	· SCREW UNION		
32	25534	1	· Gasket		
33		1	· Diaphragm		
34		1	· COVER		
35	943476	4	· Hose clamp		
36	818352	1	· Gasket, Gasket	12799	
37	825683	1	End plate, HEAT EX COVER	12799	
38		X	Rubber hose		
39					