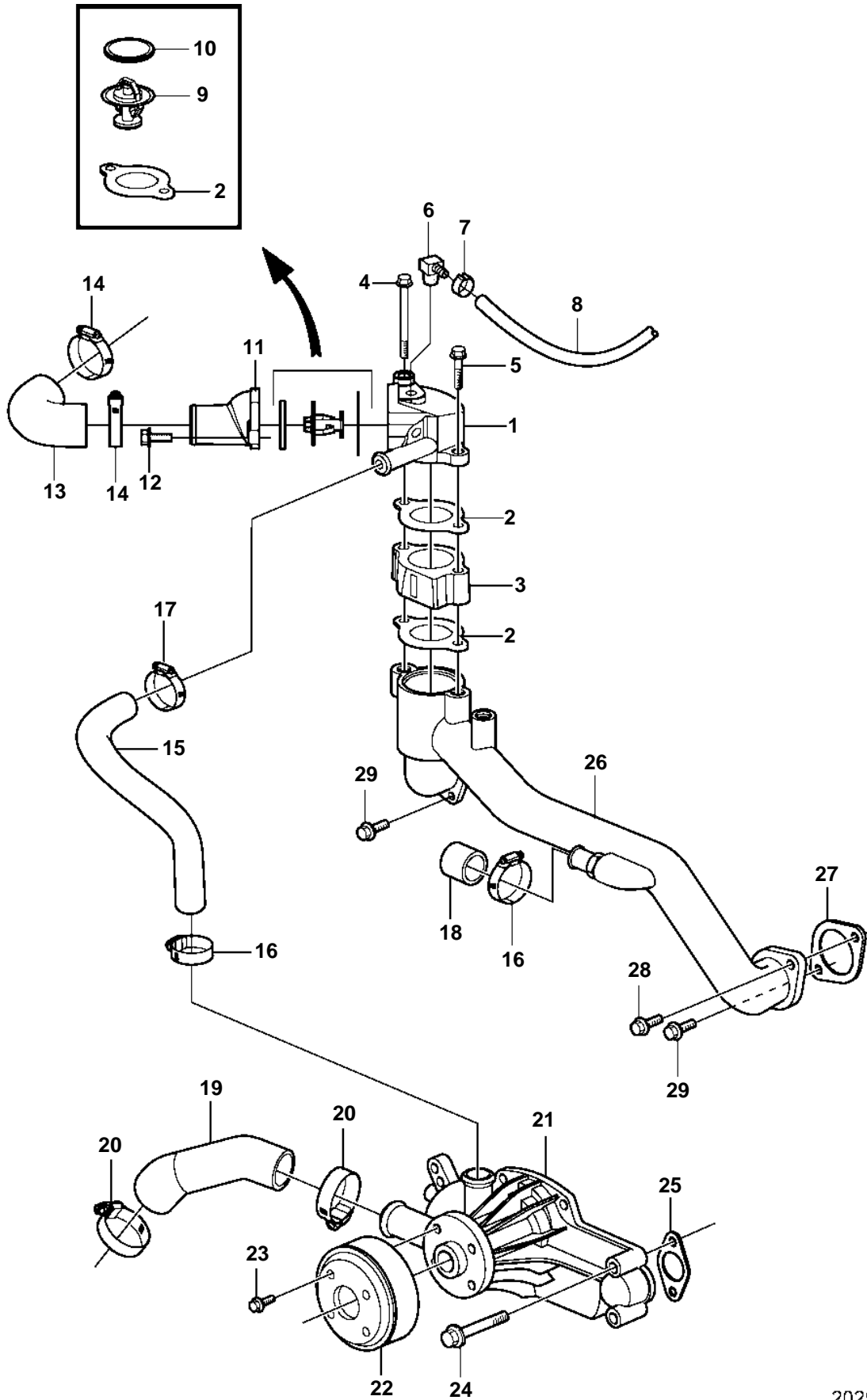


8.1Gi-FF, 8.1GXi-EF, 8.1OSi-BF, 8.1Gi-EF, 8.1GXi-DF, 8.1OSi-AF



8.1Gi-FF, 8.1GXi-EF, 8.1OSi-BF, 8.1Gi-EF, 8.1GXi-DF, 8.1OSi-AF

| REF | PART NO. | QTY | DESCRIPTION | NOTES |
|-----|----------|-----|--------------------|--------|
| 1 | 3860987 | 1 | Thermostat housing | |
| 2 | 3852111 | 3 | Gasket | |
| 3 | 3860909 | 1 | Adapter | |
| 4 | 973096 | 1 | Flange screw | |
| 5 | 965187 | 1 | Screw | |
| 6 | 3860585 | 1 | Fitting | |
| 7 | 982643 | 1 | Clamp | |
| 8 | 3860957 | 1 | Hose | |
| 9 | 3831426 | 1 | Thermostat kit | |
| 10 | 416033 | 1 | · Sealing ring | |
| 11 | 3860977 | 1 | Thermostat housing | |
| 12 | 3853401 | 2 | Screw | |
| 13 | 3860914 | 1 | Hose | |
| 14 | 3863445 | 2 | Clamp | |
| 15 | 3860953 | 1 | Hose | |
| 16 | 3853780 | 2 | Clamp | |
| 17 | 3863439 | 1 | Clamp | |
| 18 | 3852476 | 1 | Cap | |
| 19 | 3860915 | 1 | Hose | |
| 20 | 3863438 | 2 | Clamp | |
| 21 | 3861341 | 1 | Circulation pump | |
| 22 | 3861313 | 1 | Pulley | |
| 23 | 3861254 | 4 | Screw | |
| 24 | 3861246 | 3 | Screw | L=65mm |
| | | 1 | Screw | L=95mm |
| 25 | 3861285 | 2 | Gasket | |
| 26 | 3861308 | 1 | Pipe, crossover | |
| 27 | 3861286 | 2 | Gasket | |
| 28 | 965185 | 1 | Flange screw | |
| 29 | 3861245 | 3 | Screw | |