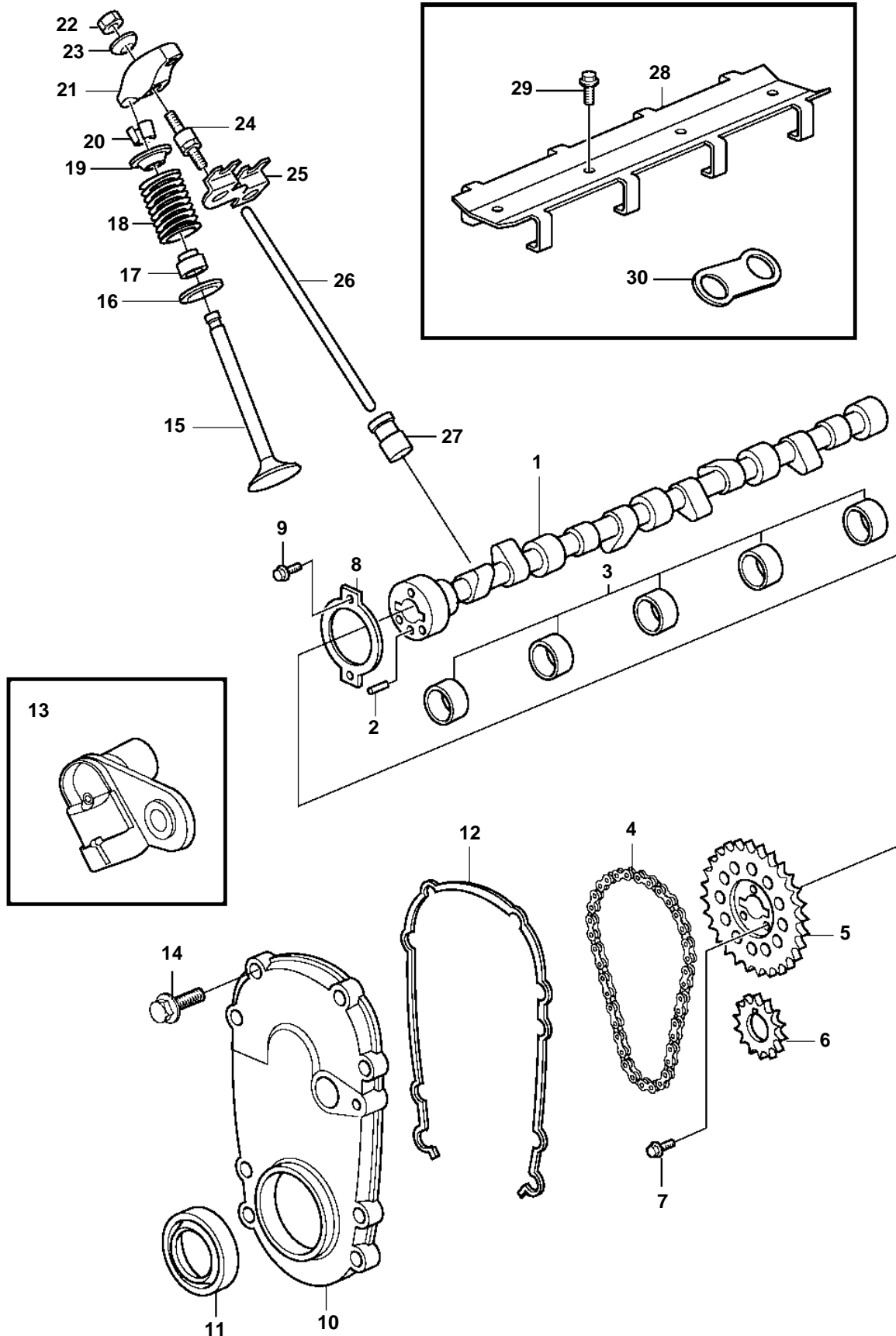


8.10Si-A, 8.10Si-AF



## 8.10Si-A, 8.10Si-AF

REF	PART NO.	QTY	DESCRIPTION	SEE SEC.	NOTES
1	3861265	1	Camshaft		
2	3855972	1	• Pin		
3	3856881	1	Camshaft bearing kit		
4	3861332	1	Chain		
5	3808515	1	Sprocket		
6	3861329	1	Sprocket		
7	3861248	3	Screw		
8	3855998	1	Retainer		
9	3861244	2	Screw		
10	3808514	1	Timing gear cover		
11	3861319	1	• Seal		
12	3861281	1	• Gasket		
13	3808513	1	Sensor, camshaft position	7079	
14	3861247	6	Screw		
15	3861336	8	Exhaust valve		STD
	3861337	X	Exhaust valve		O.S=0.015"
	3861338	X	Exhaust valve		O.S=0.030"
	3861339	8	Inlet valve		STD
	3861237	X	Inlet valve		O.S=0.015"
	3861257	X	Inlet valve		O.S=0.030"
16	3855988	16	Rotator		
17	3861317	16	Valve stem seal		
18	3861335	16	Valve spring		
19	3855977	16	Cap		
20	3853351	32	Valve collet		
21	3861316	16	Rocker arm		
22	3853649	16	Nut		
23	3861232	16	Ball		
24	3861330	16	Stud		
25	3861294	8	Guide		
26	3861314	8	Push rod		INTAKE
	3861315	8	Push rod		EXHAUST
27	3855987	16	Tappet		
28	3855999	1	Retainer		
29	3861248	7	Screw		
30	3856000	8	Guide		