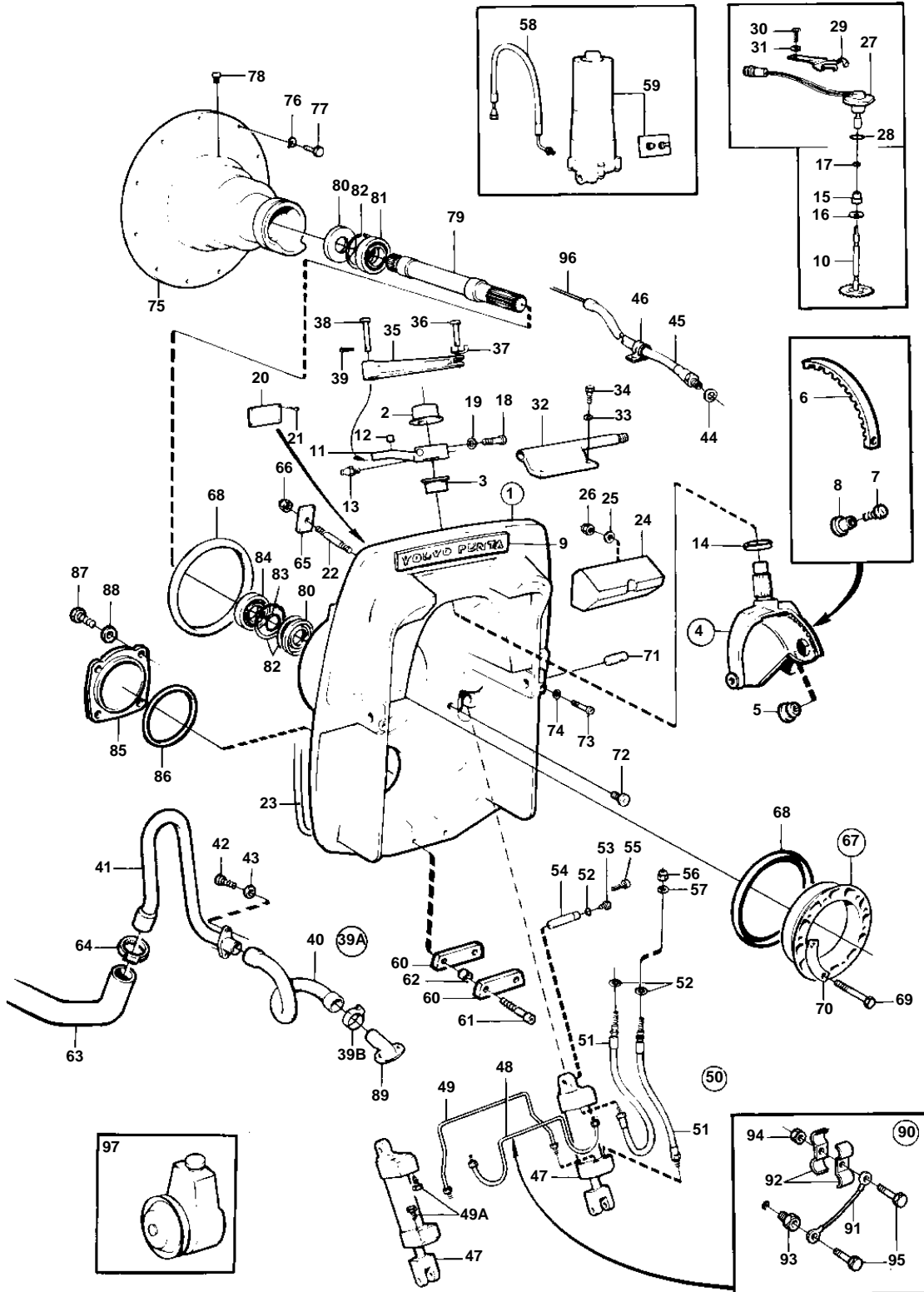


740A



10424

740A

REF	PART NO.	QTY	DESCRIPTION	SEE SEC.	NOTES
1	876150	1	Transom shield		
2	853864	1	• Bushing		
3	853863	1	• Bushing		
4	854066	1	• Steering yoke		
5	853048	1	• • Bushing		
6	854063	1	• Gear segment		
7	853759	1	• Screw		
8	853760	1	• Rivet nut		
9	852827	1	• Sign, VP		
10	852984	1	• Driving wheel		
11	853017	1	• Spindle arm		
12	949368	1	• • Bushing		
13	914169	1	• Lubricating nipple		
14	839195	1	• Ring		
			Bulletin 48-23	48-23-EN	Seal Ring
15	851430	1	• Bushing		
16	966207	1	• Sealing ring		
17	925050	1	• O-ring		
18	959241	1	• Hex. socket screw		
19	942336	1	• Spring washer		
20		1	• NUMBER PLATE		
21	804269	2	• Drive screw		
22	853982	6	• Stud		SN-1101591851
	853595	6	• Stud		NOTE, SN 1101591652-
23	852868	X	Sealing strip		L = 1750 MM
24	854133	1	Rubber cushion		
25	960148	2	Washer		
26	971089	2	Lock nut		
27	828726	1	Sensor		
28	955991	1	O-ring		
29	853039	1	Bracket		
30	940199	1	Hexagon screw		
31	941907	1	Spring washer		
32	852775	1	Cable attachment		
33	941908	2	Spring washer		
34	970950	2	Hexagon screw		
35	852786	1	Link rod		
36	913158	1	Clevis pin		
37	853160	1	Lock washer		
38		1	Bolt		
39	907856	1	Split pin		
39A	875847	1	Hose kit		
39B	853548	1	• Hose clamp		
40	854555	1	• Hose		REPL BY 875847
41		1	Coolant pipe		
42	940100	2	Hexagon screw		
43	941906	2	Spring washer		
44	897745	1	Gasket		
45	839091	1	Protecting hose		
46	952635	1	Clamp		
47	853439	2	Hydraulic cylinder		REPL BY 854610
	854610	2	Hydraulic cylinder		TRIMMING CYLINDER KIT 872612 CONSISTS OF 2EA 872598 + 854696 + 854697 + 872595 + 872596 + 2EA 852879 + 854627 + 872207 + 2EA 854628 + 944456 + 2EA 872382 + 2EA 963545 + 2EA 925053., REPL BY 872612
	872612	1	Trimming cylind kit		SHIELD KIT, SN 1101611401 - 1101612600.
	872598	2	Cylinder		INCLUDED IN TRIMMING CYLINDER KIT 872612.
48	852830	1	Tube		FRONT
	854696	1	Tube		INCLUDED IN TRIMMING CYLINDER KIT 872612., FRONT
49	852832	1	Tube		REAR

7745660 - 44 - 19993

10424

Upd: 2009-11-26

740A, 740A/MS5

VOLVO
PENTA

740A

REF	PART NO.	QTY	DESCRIPTION	SEE SEC.	NOTES
49	854697	1	Tube		INCLUDED IN TRIMMING CYLINDER KIT 872612., REAR
49A	852879	2	Plug		
50	854752	1	Set		SN 1101592794-
51	854710	1	· Hydraulic hose		FRONT
	872595	1	Hydraulic hose		INCLUDED IN TRIMMING CYLINDER KIT 872612., FRONT
	854711	1	· Hydraulic hose		REAR
	872596	1	Hydraulic hose		INCLUDED IN TRIMMING CYLINDER KIT 872612., REAR
52	925053	4	· O-ring		
53	852879	2	Plug		
54	852748	2	Pin		
55	853060	2	Flange screw		
56	853100	2	Lock nut		
57	853059	2	Washer		
58	852839	2	Hose	19995	
59		1	HYDRAULIC PUMP AND TRIM INSTRUMENT WITH INSTALLATION COMPONENTS	19995	
60	852835	2	Zinc electrode		
61	963701	2	Hex. socket screw		
62	854486	2	Spacer tube		
63	854489	1	Hose		
64	961669	4	Hose clamp		
65	852866	6	Washer		
66	963108	6	Lock nut		
67	854315	1	Clamping ring kit		
68	804190	2	· Rubber ring		
69	191844	6	· Hexagon screw		
70	806624	3	· Striker plate		
71	853175	2	Pivot pin		
72	853215	2	Plug		
73	963699	2	Hex. socket screw		
74	941670	2	Washer		
75	841967	1	Flywheel housing		
76	942336	6	Spring washer		
77	941939	6	Screw		
78	914167	1	Lubricating nipple		
79	853809	1	Spindle		
80	958860	2	Sealing ring		
81	11013	1	Ball bearing		
82	914533	3	Snap ring		
83	914462	1	Snap ring		
84	181105	1	Ball bearing		
85		1	Seal flange		
86	925260	1	O-ring		
87	970945	4	Hexagon screw		
88	941908	4	Spring washer		
89	854031	1	Hose connection		
90	854625	1	Set		
91	854627	1	· Ground cable		
92	854628	2	· Clamp		
93	872207	1	· Nipple		
94	944456	1	· Hexagon nut		
95	963545	2	· Hexagon screw		
96		X	CONTROL CABLE		SEE GROUP 9
97		X	POWER STEERING		SEE GROUP 6