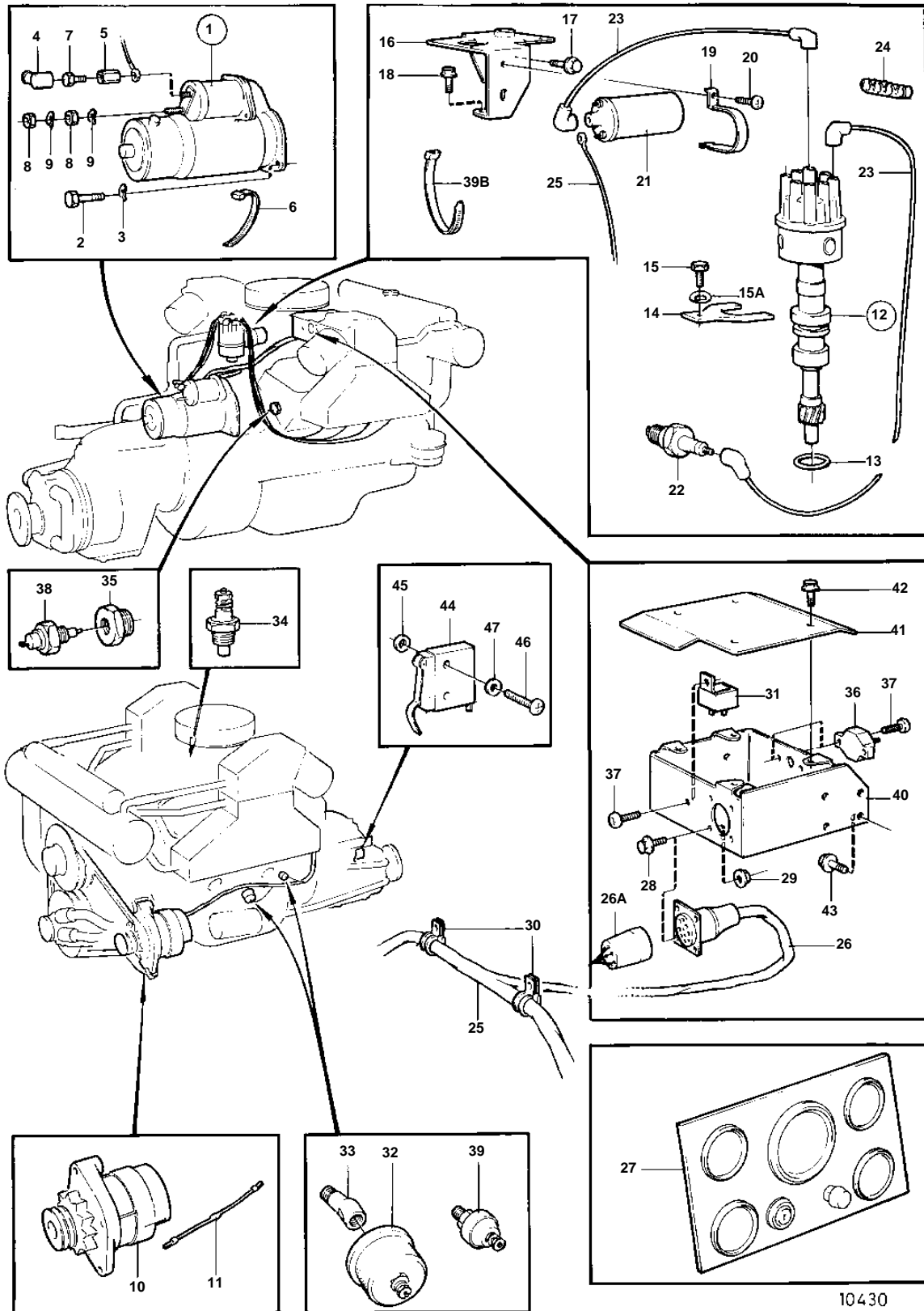


740A/MS5



10430

740A/MS5

REF	PART NO.	QTY	DESCRIPTION	SEE SEC.	NOTES
1	855334	1	Starter motor · COMPONENTS NOT SPEC.		ALSO AVAILABLE AS AN EXCHANGE PART.
2	940134	2	Hexagon screw		
3	941909	2	Spring washer		
4	855798	1	Protecting sleeve		
5	855330	1	Nut		
6	948210	2	Cable tie		
7	970943	1	Hexagon screw		
8	955780	2	Hexagon nut		
9	941905	2	Spring washer		
10		1	ALTERNATOR WITH INSTALLATION COMPONENTS	19982	
11	834784	1	Resistor		
12	855932	1	Distributor		
				19983	
13	835154	1	Gasket		
14	841530	1	Retainer		
15	940114	1	Hexagon screw		
15A	942336	1	Spring washer		
16		1	BRACKET		SEE GROUP 2D
17	946440	4	Flange screw		
18	942624	1	Flange screw		
19	856440	1	Clamp		
20		1	Screw		
21	855706	1	Ignition coil		
22	876047	2	Spark plug kit		
23	856771	X	Ignition cable		ALL IGNITION CABLES PARTNO 856771 WHICH ARE 1000MM AND SHOULD BE CUT OFF IN SUITABLE LENGTHS., L = 1000 MM
24		2	Retainer		
25	856336	1	Cable trunk		
26		1	· EXTENSION		
26A		X	Extension cable\verl		L = 3000 MM
26	856882	X	Extension cable\verl		L = 6000 MM
27		1	Instrument panel		EUR
				19987	
		1	Instrument panel		USA
				19986	
28	946934	4	Flange screw		
29	945407	4	Flange nut		
30	942810	2	Clamp		
31	841177	1	Relay		
32	834920	1	Oil pressure sensor		
33	809109	1	Elbow nipple		
34	835630	1	Temperature sensor		
35		1	Nipple		
36	856337	2	Automatic fuse		50A
37	950013	6	Cross recessed screw		
38	841890	1	Switch		
39	841599	1	Pressure monitor		
39B	948210	X	Cable tie		
40	856317	1	Electrical distribut		
41		1	Cardboard tube		
42	965175	4	Flange screw		
43	946440	4	Flange screw		
44		1	Switch		
			· CABLES AND TERMINALS	19988	
45		1	Washer		
46	956052	2	Cross recessed screw		
47	955890	2	Washer		