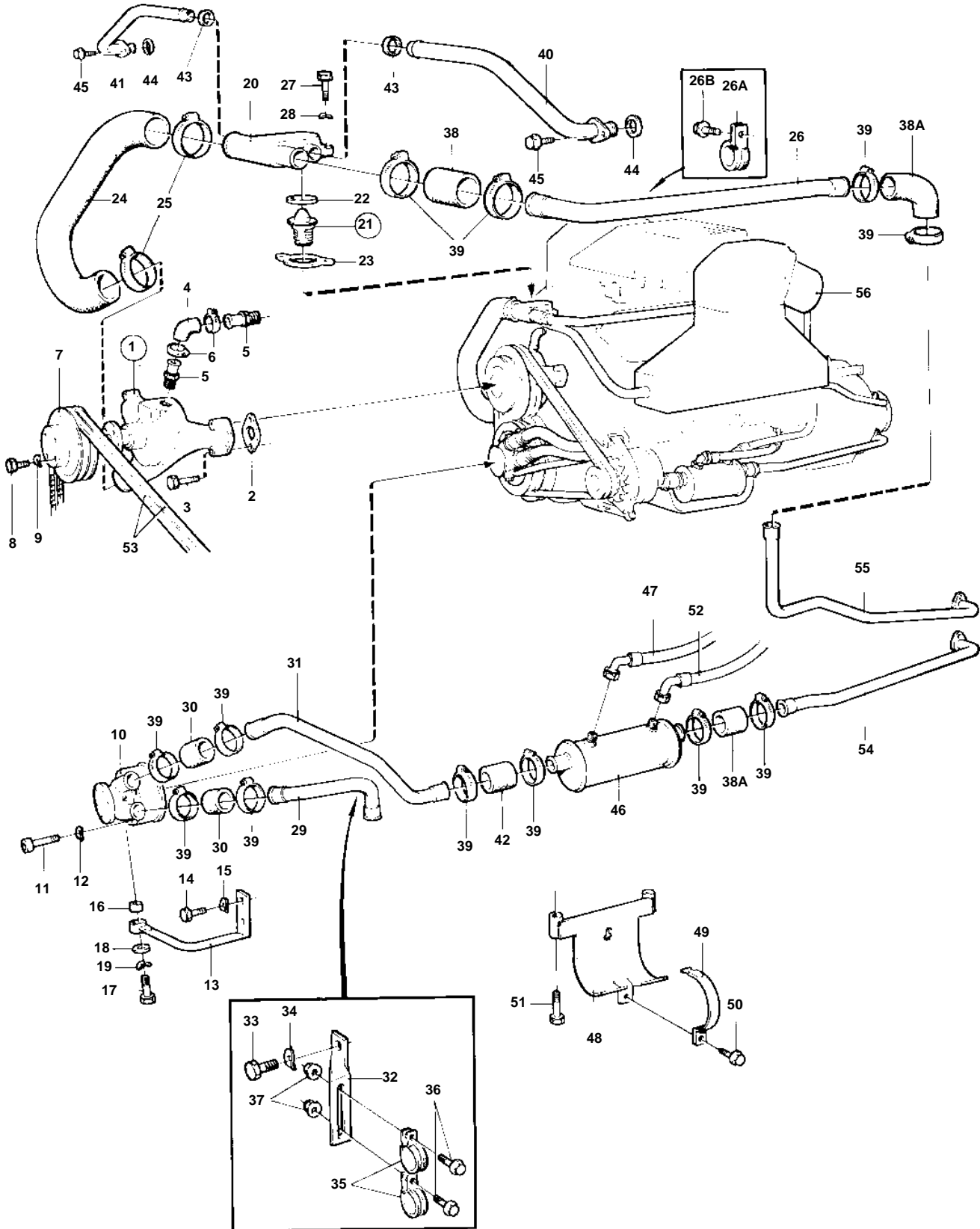


740A/MS5



**740A/MS5**

REF	PART NO.	QTY	DESCRIPTION	SEE SEC.	NOTES
1	856609	1	Water pump · COMPONENTS		
2	856610	2	Gasket		
3	955536	4	Hexagon screw		
4	856611	1	Hose		
5		2	Hose attachment		
6	961666	2	Hose clamp		
7	855283	1	Pulley		
8	955656	4	Hexagon screw		
9	941907	4	Spring washer		
10	856513	1	Sea water pump		
				19972	
11	956594	3	Hex. socket screw		
12	942336	3	Spring washer		
13	856155	1	Bracket		
14	940116	2	Hexagon screw		
15	941909	2	Spring washer		
16	826422	1	Rubber bushing		
17	955523	1	Hexagon screw		
18	960141	1	Washer		
19	941907	1	Spring washer		
20		1	Housing		
21	876305	1	Thermostat kit		62°C
22	416033	1	· Sealing ring		
23	835417	1	· Gasket		
24	856262	1	Hose		
25	961671	2	Hose clamp		
26		1	Coolant pipe		
26A	943717	1	Clamp		
26B	946440	1	Flange screw		SEE GROUP 3
27	940115	2	Hexagon screw		
28	942336	2	Spring washer		
29	856222	1	Coolant pipe		
30	952973	X	Hose		L = 2X70 MM
31	856268	1	Coolant pipe		
32	858587	1	Bracket		
33	940133	1	Hexagon screw		
34	942336	1	Spring washer		
35	943717	2	Clamp		
36	946544	2	Flange screw		
37	945407	2	Flange nut		
38	952973	X	Hose		L = 100 MM
38A	856306	1	Hose		
			Bulletin 42-14	42-14-EN	Hose
39	961669	18	Hose clamp		
40	855987	1	Coolant pipe		
41	855986	1	Coolant pipe		
42	952973	X	Hose		L = 100 MM
43	858986	2	Sealing ring		
44	842913	2	Sealing ring		
45	965175	4	Flange screw		
46		1	OIL COOLER		SEE GROUP 2A
47		1	CONNECTION		SEE GROUP 2A
48		1	Bracket		
49		1	Clamp		
50	946440	1	Flange screw		
51	955526	2	Hexagon screw		
52		1	CONNECTION		SEE GROUP 2A
53	967191	1	V-belt, DRIVE BELT KIT		SEE GROUP 3 L = 2X1275 MM
54	856223	1	Coolant pipe		SEE GROUP 4A
55		1	Coolant pipe		SEE GROUP 4A
56		2	EXHAUST MANIFOLD	19969	