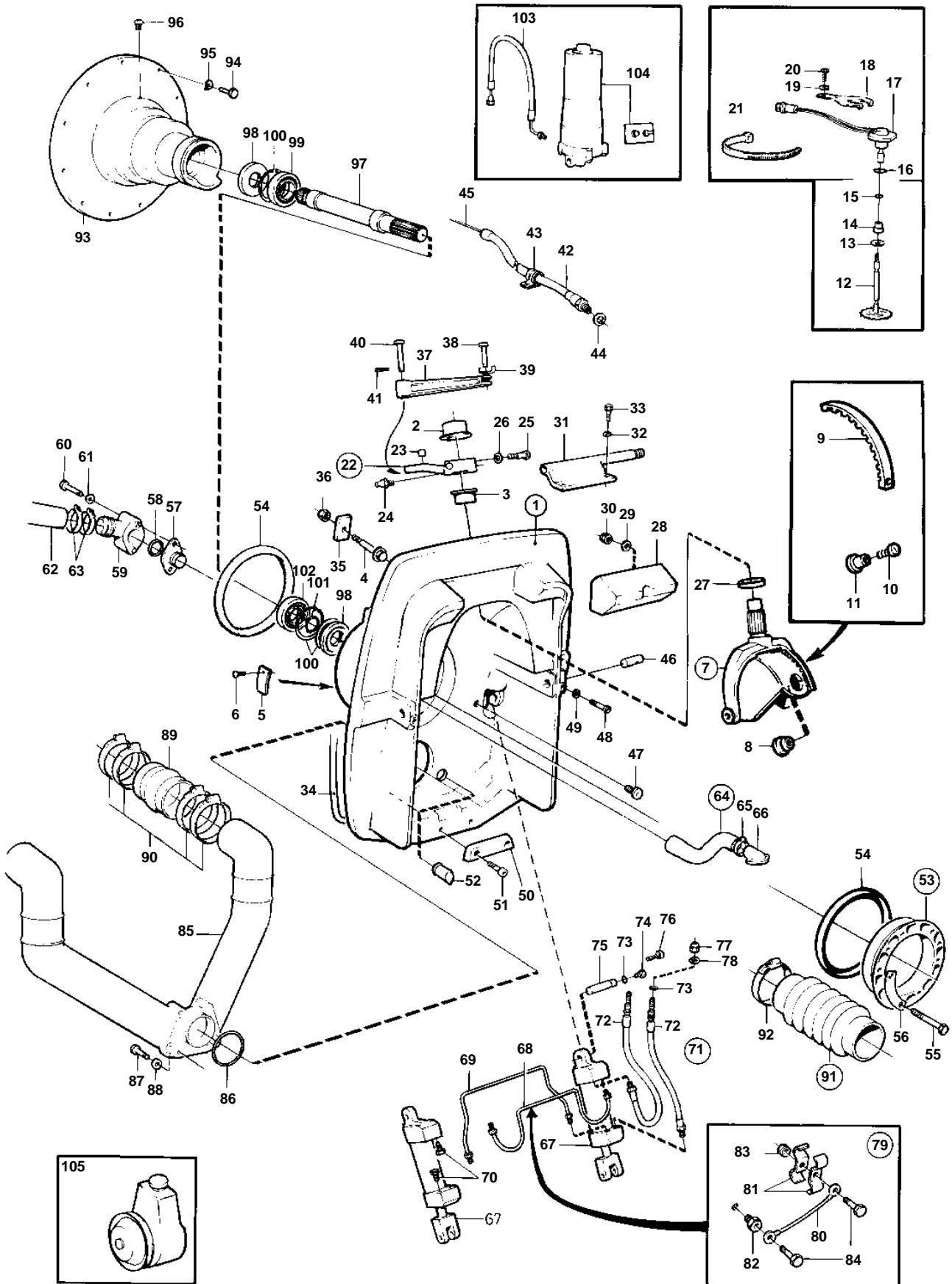


740A



10852

740A

REF	PART NO.	QTY	DESCRIPTION	SEE SEC.	NOTES
1	876506	1	Shield		
2	853864	1	· Bushing		
3	853863	1	· Bushing		
4	853595	6	· Stud		
5	853706	1	· Type plate		
6	804269	2	· Drive screw		
7	854066	1	Steering fork kit		
8	853048	1	· Bushing		
9	854063	1	Gear segment		
10	853759	1	Screw		
11	853760	1	Rivet nut		
12	852984	1	Drive gear		
13	966207	1	Sealing ring		
14	851430	1	Bushing		
15	925050	1	O-ring		
16	955991	1	O-ring		
17	828726	1	Potentiometer		
18	853039	1	Bracket		
19	941907	1	Spring washer		
20	940199	1	Screw		
21	948210	1	Strip clamp		
22	853017	1	Spindle arm		
23	949368	1	· Bushing		
24	914169	1	Lubricating nipple		
25	959241	1	Screw		
26	942336	1	Spring washer		
27	839195	1	Ring		
			Bulletin 48-23	48-23-EN	Seal Ring
28	854133	1	Rubber cushion		
29	960148	2	Washer		
30	971089	2	Lock nut		
31	852775	1	Cable attachment		
32	941908	2	Spring washer		
33	970950	2	Screw		
34	852868	X	Sealing strip		L = 1750 MM
35	852866	6	Washer		
36	963108	6	Nut		
37	852786	1	Link rod		
38	913158	1	Clevis pin		
39	853160	1	Lock washer		
40	852788	1	Clevis pin		
41	907856	1	Cotter pin		
42	839091	1	Hose		
43	952635	1	Clamp		
44	897745	1	Gasket		
45		X	CONTROL CABLE		SEE GROUP 9
46	853175	2	Pivot pin		
47	853215	2	Plug		
48	963699	2	Screw		
49	941670	2	Washer		
50	852835	1	Zinc electrode		
51	946541	2	Screw		
52	872228	2	Check valve		
53	854315	1	Clamping ring kit		
54	804190	2	· Rubber ring		
55	191844	6	· Screw		
56	806624	3	· Striker plate		
57	872234	1	Pressure hose		
58	925064	1	O-ring		
59	872338	1	Hose nipple		
60	955516	2	Screw		
61	955893	2	Washer		
62	857048	1	Hose		INTAKE-SEA WATER PUMP

7745660 - 04A - 04A-0480

10852

Upd: 22 NOV 2005

740A

VOLVO
PENTA

740A

REF	PART NO.	QTY	DESCRIPTION	SEE SEC.	NOTES
63	961669	2	Hose clamp		
64	875847	1	Hose kit		
65	853548	1	· Hose clamp		
66		1	HOSE CONNECTION		SEE GROUP 4C
67	854610	2	Hydraulic cylinder		REPL BY 872612. TRIMMING CYLINDER KIT 872612 CONSISTS OF 2EA 872598 + 854696 + 854697 + 872595 + 872596 + 2EA 852879 + 854627 + 872207 + 2EA 854628 + 944456 + 2EA 872382 + 2EA 963545 + 2EA 925053.
	872612	1	Trimming cylind kit		
	872598	2	Trimming cylinder		INCLUDED IN TRIMMING CYLINDER KIT 872612.
68	852830	1	Tube		FRONT
	854696	1	Tube		FRONT. INCLUDED IN TRIMMING CYLINDER KIT 872612.
69	852832	1	Tube		REAR
	854697	1	Tube		REAR. INCLUDED IN TRIMMING CYLINDER KIT 872612.
70	852879	2	Plug		
71	854752	1	Hydraulic hose		
72	854710	1	· Hydraulic hose		FRONT
	872595	1	Hydraulic hose		FRONT. INCLUDED IN TRIMMING CYLINDER KIT 872612.
	854711	1	· Hydraulic hose		REAR
	872596	1	Hydraulic hose		REAR. INCLUDED IN TRIMMING CYLINDER KIT 872612.
73	925053	4	· O-ring		
74	852879	2	Plug		
75	852748	2	Pin		
76	853060	2	Flange screw		
77	853100	2	Nut		
78	853059	2	Washer		
79	854625	1	Ground cable		
80	854627	1	· Ground cable		
81	854628	2	· Clamp		
82	872207	1	· Nipple		
83	944456	1	· Nut		
84	963545	2	· Screw		
85	872093	1	Exhaust pipe		
	857028		Exhaust grommet		SEE GROUP 9
86	925256	1	O-ring		
87	970958	4	Screw		
88	960148	4	Washer		
89	872048	2	Exhaust hose		
90	853012	8	Hose clamp		
91	875848	1	Bellows kit		
92	961675	2	· Hose clamp		
93	841967	1	Flywheel housing		
94	941939	6	Screw		
95	942336	6	Spring washer		
96	914167	1	Lubricating nipple		
97	853809	1	Shaft		
98	958860	2	Sealing ring		
99	11013	1	Ball bearing		
100	914533	3	Snap ring		
101	914462	1	Lock ring		
102	181105	1	Ball bearing		
103	852839	2	Hose	04A-0500	
104		1	HYDRAULIC PUMP AND TRIM INSTRUMENT WITH INSTALLATION COMPONENTS	04A-0500	

7745660 - 04A - 04A-0480

10852

Upd: 22 NOV 2005

740A

VOLVO
PENTA

740A

REF	PART NO.	QTY	DESCRIPTION	SEE SEC.	NOTES
105		1	POWER STEERING		SEE GROUP 6

7745660 - 04A - 04A-0480

10852

Upd: 22 NOV 2005

740A