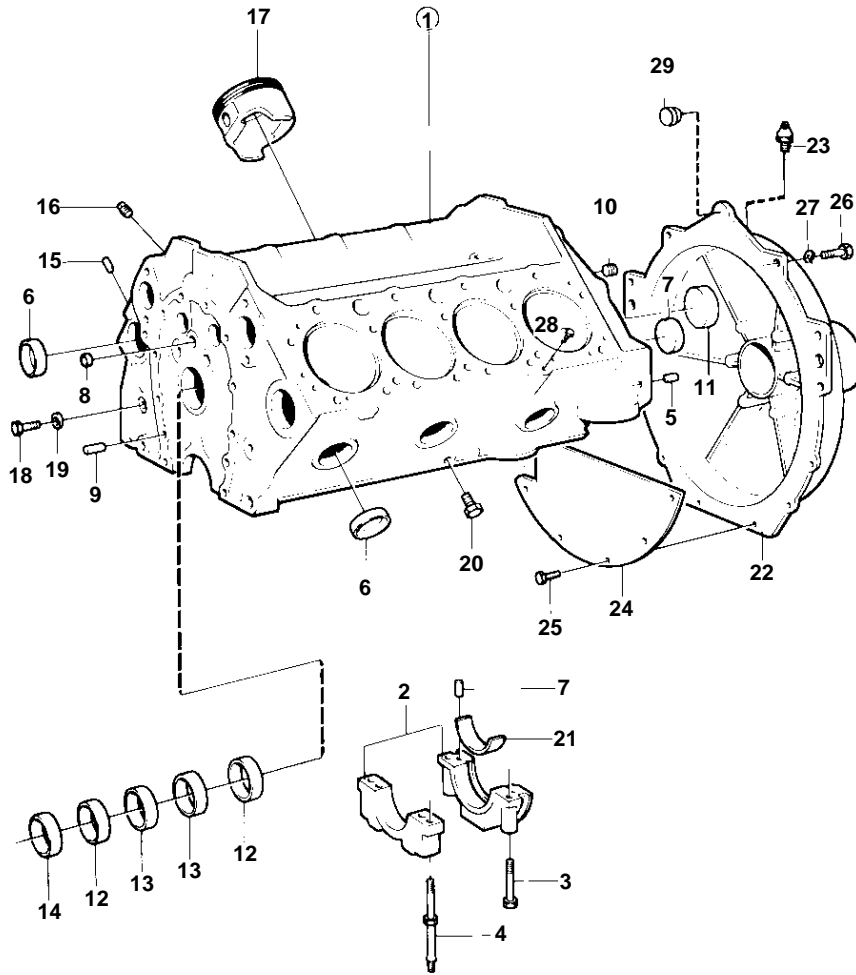


500A, 501A



10972

500A, 501A

REF	PART NO.	QTY	DESCRIPTION	SEE SEC.	NOTES
1		1	CYLINDER BLOCK		INCLUDED IN BASIC ENGINE, SEE GROUP 10A
2		5	· BEARING CAP		
3	835037	5	· Screw		
4	835038	5	· Stud	19726	
5		2	· Locating pin		
6	835039	8	· Plug		
7	835040	2	· Locating pin		
8	856230	4	· Plug		
9	835040	2	· Locating pin		
10	952075	5	· Plug		
11	835496	1	· Plug		
12	841423	2	· Bushing	19724	
13	841424	2	· Bushing	19724	
14	841422	1	· Bearing	19724	
15	835497	4	· Locating pin		
16	191026	1	· Plug		(952069)
17	856061	8	· Piston	19722	
18	940133	1	· Hexagon screw		
19	18651	1	· Gasket		
20	192134	2	· Plug		
21		X	· MAIN BEARING KIT	19722	
22	841967	1	Flywheel housing		
23	914167	1	Lubricating nipple		
24	826448	1	Cover plate		
25	947224	5	Hexagon screw		
26	941939	6	Screw		
27	942336	6	Spring washer		
28	943835	1	Plug		
29	944738	1	Plug		

7745640 - 21 - 19720

10972

Upd: 2009-11-26

500A, 501A, 501A/MS4

**VOLVO**  
**PENTA**