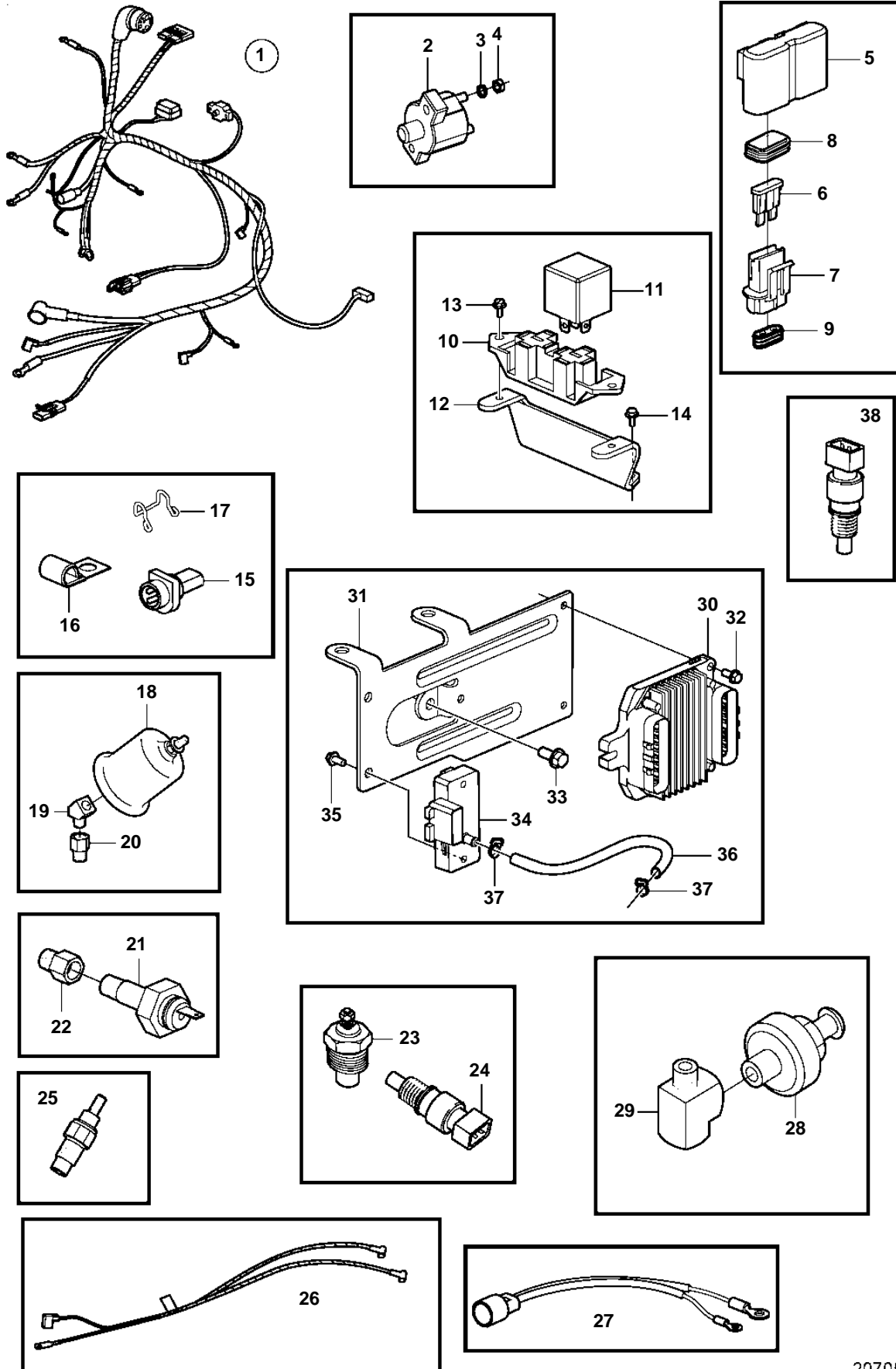


5.0GXi-A



5.0GXi-A

| REF | PART NO. | QTY | DESCRIPTION | SEE SEC. | NOTES |
|-----|----------|-----|---|-------------|------------------|
| 1 | 3860041 | 1 | Wiring harness | | |
| 2 | 3854164 | 1 | · Automatic fuse | | 50A |
| 3 | 3852001 | 2 | · Spring washer | | |
| 4 | 3852064 | 2 | · Nut | | |
| 5 | 3860455 | 3 | · Fuse holder | | |
| 6 | 979686 | 2 | · Fuse | | 40A |
| | 968547 | 2 | · Fuse | | 20A |
| | 966329 | 2 | · Fuse | | 15A |
| 7 | 8166029 | 6 | · Insulator | | |
| 8 | | 6 | · · Seal | | |
| 9 | | 6 | · · Seal | | |
| 10 | 3852210 | 1 | · Bracket | | |
| 11 | 3857533 | 2 | · Relay | | FUEL PUMP |
| 12 | 3860370 | 1 | Bracket | | |
| 13 | 3852208 | 2 | Screw | | |
| 14 | 3852053 | 2 | Screw | | |
| 15 | 3855178 | 1 | Connector | | |
| 16 | 3852434 | 1 | Clamp, J | | D=.750" (19.0mm) |
| | 3852092 | 1 | Clamp, J | | D=.500" (12.7mm) |
| 17 | 3852237 | 2 | Retainer | | |
| 18 | 3857532 | 1 | Oil pressure sensor, oil pressure | | |
| | 872064 | X | Pressure sensor, oil pressure | | DUAL STATION |
| 19 | 3852503 | 1 | Elbow | | |
| 20 | 3855776 | 1 | Adapter | | |
| 21 | 3852215 | 1 | Sensor, oil pressure | | |
| 22 | 3850660 | 1 | Fitting | | |
| 23 | 3852029 | 1 | Sensor, coolant water temp. | | |
| | 872068 | X | Temperature sensor, coolant water temp. | | DUAL STATION |
| 24 | 3850397 | 1 | Switch, coolant water temp. | | |
| 25 | 3861997 | 2 | Temperature sensor | | |
| 26 | 3862220 | 1 | Wiring harness | | EXHAUST SENSOR |
| 27 | 3854031 | 1 | Wiring harness, trim | | |
| 28 | 3854905 | 1 | Sensor, knock | | |
| 29 | 3850490 | 1 | Fitting | | |
| 30 | 3858887 | 1 | Engine control modul | | |
| | | | · Bulletin P-28-4-9 | P-28-4-9-EN | ECM Replacement |
| 30 | 3858888 | 1 | Engine control modul | | |
| | | | · Bulletin P-28-4-9 | P-28-4-9-EN | ECM Replacement |
| 30 | 3861525 | 1 | Engine control modul | | |
| | | | · Bulletin P-28-4-9 | P-28-4-9-EN | ECM Replacement |
| 31 | 3857815 | 1 | Bracket | | |
| 32 | 3852053 | 3 | Screw | | |
| 33 | 3853398 | 1 | Screw | | |
| 34 | 3850396 | 1 | Sensor, MAP | | |
| 35 | 3852115 | 2 | Screw | | |
| 36 | 3854903 | 1 | Hose | | |
| 37 | 3852529 | 2 | Clamp | | |
| 38 | 3854527 | 1 | Sensor, MAT | | |