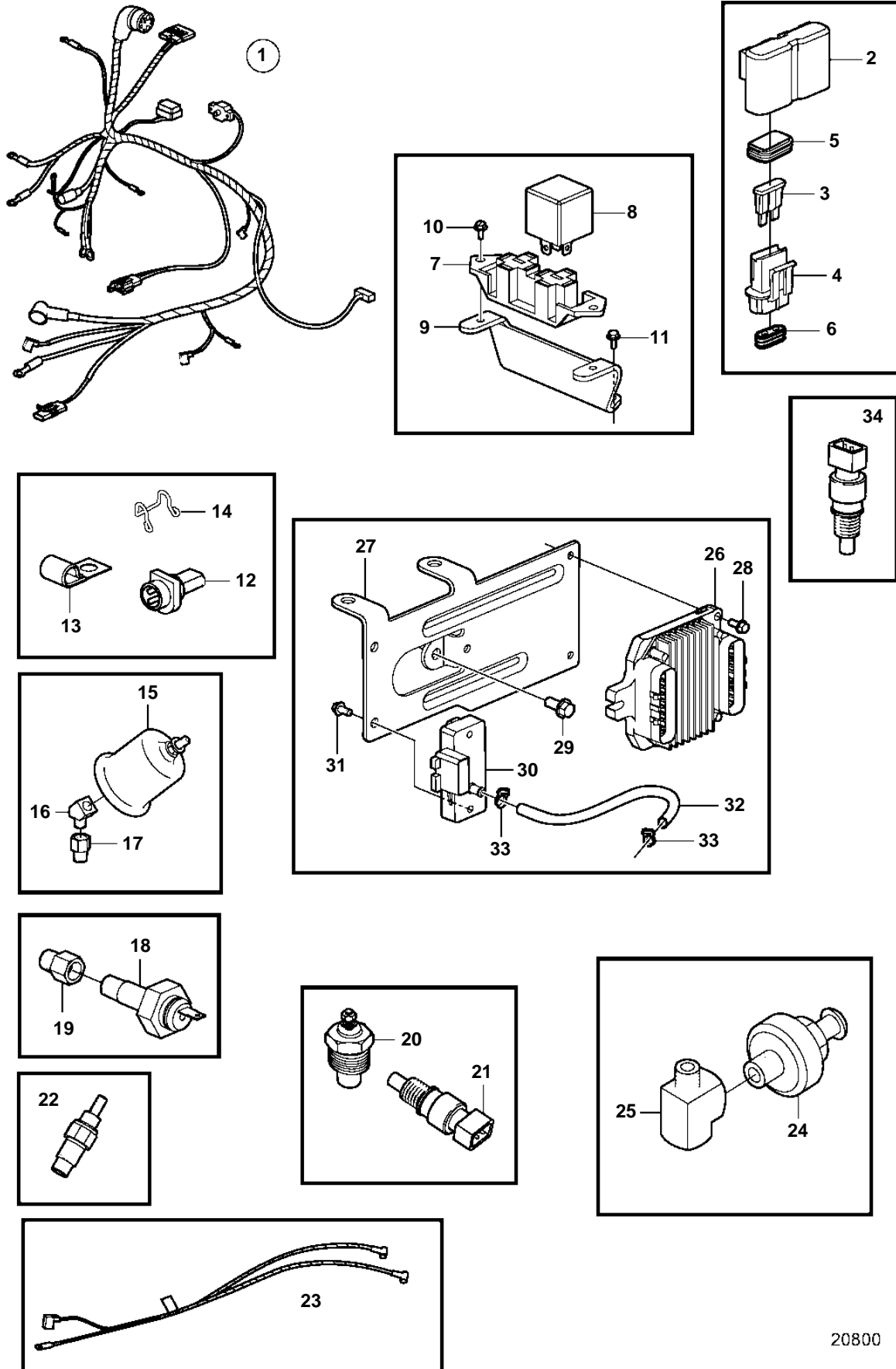


5.7GXil-B



20800

5.7GXii-B

REF	PART NO.	QTY	DESCRIPTION	SEE SEC.	NOTES
1	3861211	1	Wiring harness		
2	3860455	3	· Fuse holder		
3	979686	2	· Fuse		40A
	968547	2	· Fuse		20A
	966329	2	· Fuse		15A
4	8166029	6	· Insulator		
5		6	· · Seal		
6		6	· · Seal		
7	3852210	1	· Bracket		
8	3857533	2	· Relay		FUEL PUMP
9	3860370	1	Bracket		
10	3852208	2	Screw		
11	3852053	2	Screw		
12	3855178	1	Connector		
13	3852434	1	Clamp, J		D=.750" (19.0mm)
	3852092	1	Clamp, J		D=.500" (12.7mm)
14	3852237	2	Retainer		
15	3857532	1	Oil pressure sensor, oil pressure		
	872064	X	Pressure sensor, oil pressure		DUAL STATION
16	3852503	1	Elbow		
17	3855776	1	Adapter		
18	3852215	1	Sensor, oil pressure		
19	3850660	1	Fitting		
20	3852029	1	Sensor, coolant water temp.		
	872068	X	Temperature sensor, coolant water temp.		DUAL STATION
21	3850397	1	Switch, coolant water temp.		
22	3861997	2	Temperature sensor		
23	3862221	1	Wiring harness		EXHAUST SENSOR
24	3854905	1	Sensor, knock		
25	3850490	1	Fitting		
26	3861525	1	Engine control modul		
			· Bulletin P-28-4-9	P-28-4-9-EN	ECM Replacement
27	3857815	1	Bracket		
28	3852053	3	Screw		
29	3853398	1	Screw		
30	3850396	1	Sensor, MAP		
31	3852115	2	Screw		
32	3854903	1	Hose		
33	3852529	2	Clamp		
34	3854527	1	Sensor, MAT		