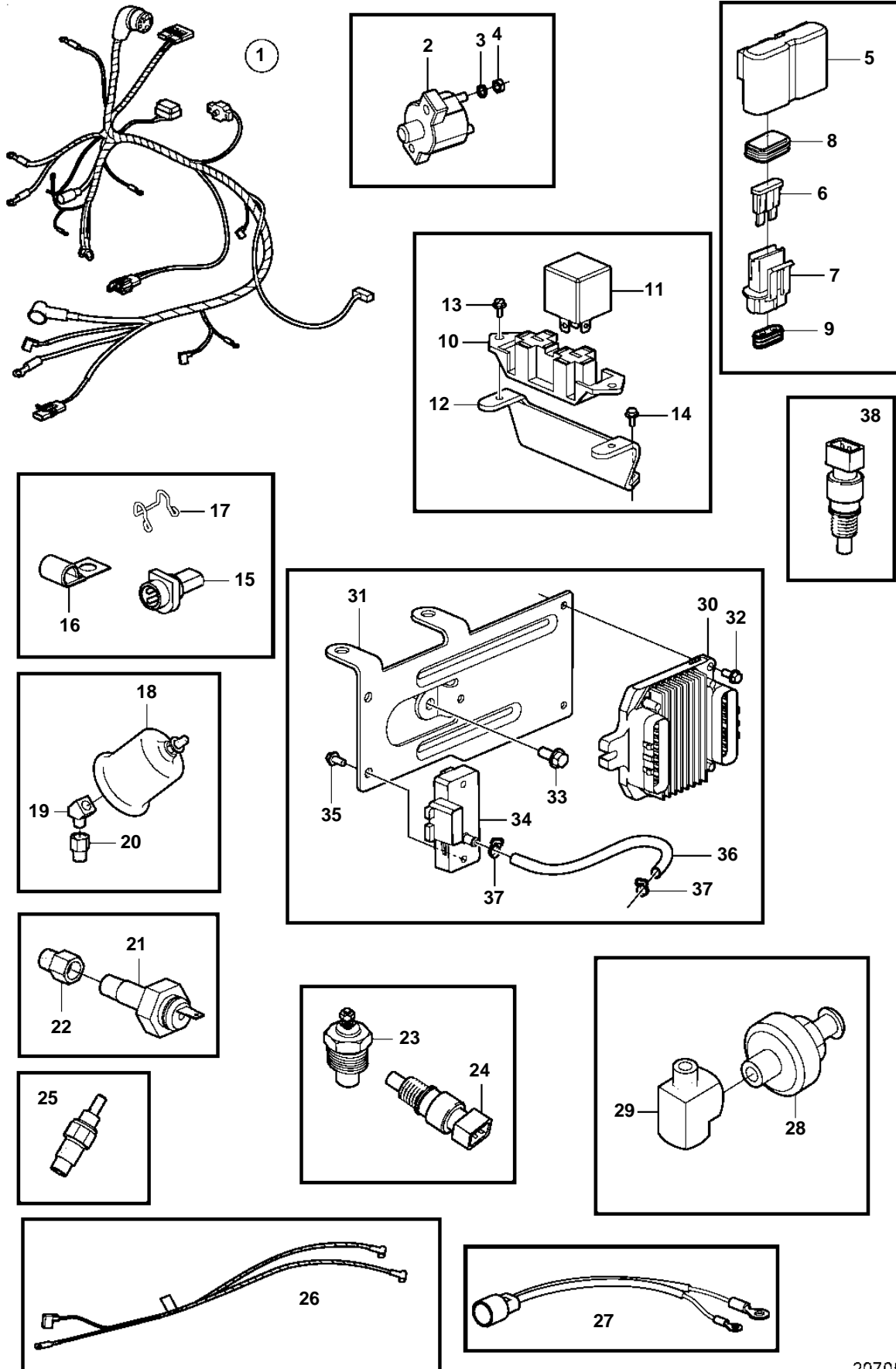


5.7GXl-B



5.7GXi-B

REF	PART NO.	QTY	DESCRIPTION	SEE SEC.	NOTES
1	3860041	1	Wiring harness		
2	3854164	1	· Automatic fuse		50A
3	3852001	2	· Spring washer		
4	3852064	2	· Nut		
5	3860455	3	· Fuse holder		
6	979686	2	· Fuse		40A
	968547	2	· Fuse		20A
	966329	2	· Fuse		15A
7	8166029	6	· Insulator		
8		6	· · Seal		
9		6	· · Seal		
10	3852210	1	· Bracket		
11	3857533	2	· Relay		FUEL PUMP
12	3860370	1	Bracket		
13	3852208	2	Screw		
14	3852053	2	Screw		
15	3855178	1	Connector		
16	3852434	1	Clamp, J		D=.750" (19.0mm)
	3852092	1	Clamp, J		D=.500" (12.7mm)
17	3852237	2	Retainer		
18	3857532	1	Oil pressure sensor, oil pressure		
	872064	X	Pressure sensor, oil pressure		DUAL STATION
19	3852503	1	Elbow		
20	3855776	1	Adapter		
21	3852215	1	Sensor, oil pressure		
22	3850660	1	Fitting		
23	3852029	1	Sensor, coolant water temp.		
	872068	X	Temperature sensor, coolant water temp.		DUAL STATION
24	3850397	1	Switch, coolant water temp.		
25	3861997	2	Temperature sensor		
26	3862220	1	Wiring harness		EXHAUST SENSOR
27	3854031	1	Wiring harness, trim		
28	3854905	1	Sensor, knock		
29	3850490	1	Fitting		
30	3861525	1	Engine control modul		
			· Bulletin P-28-4-9	P-28-4-9-EN	ECM Replacement
31	3857815	1	Bracket		
32	3852053	3	Screw		
33	3853398	1	Screw		
34	3850396	1	Sensor, MAP		
35	3852115	2	Screw		
36	3854903	1	Hose		
37	3852529	2	Clamp		
38	3854527	1	Sensor, MAT		