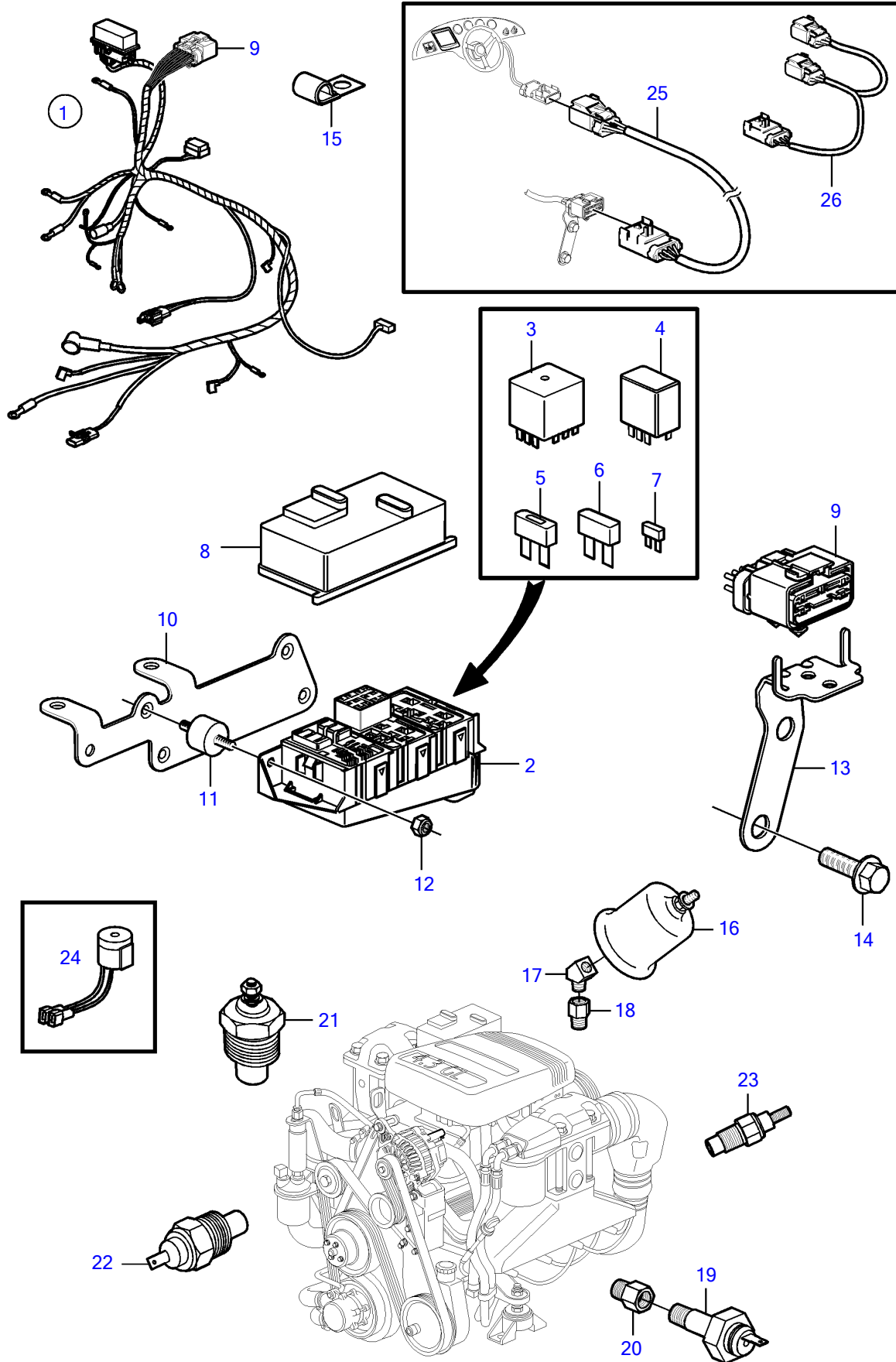


4.3GL-P



4.3GL-P

REF	PART NO.	QTY	DESCRIPTION	NOTES
1	3884239	1	Wiring harness	
2		1	• Fuse box	Not sold separately
3	3858809	3	• Relay	
4	3841366	2	• Relay	
5	3884849	1	• Fuse	40A
6	3841370	1	• Fuse	20A
	3841371	1	• Fuse	40A
7	3841373	1	• Fuse	5A
	3863403	1	• Fuse	7.5A
	3841372	1	• Fuse	10A
	3861373	1	• Fuse	15A
	3861374	1	• Fuse	20A
8		1	• Cover plate	Not sold separately
9		1	• Connector, 14 pin	Not sold separately
10	3843887	1	Bracket	
11	3840402	2	Mounting base	
12	3852118	2	Nut	
13	3884234	1	Bracket	
14	(3853557)	2	Flange screw	Obsolete part
15	3852434	5	Clamp, J	D=.750" (19.0mm)
	(3852146)	2	Clamp, J	Obsolete part, D=.375" (9.5mm)
16	3857532	1	Oil pressure sensor, oil pressure	
	872064	1	Pressure sensor, oil pressure	Dual station
17	3852503	1	Elbow	
18	3855776	1	Adapter	
19	3852215	1	Sensor, oil pressure	
20	3850660	1	Fitting	
21	3852029	1	Sensor, coolant water temp.	
	872068	1	Temperature sensor, coolant water temp.	Dual station
22	872066	1	Thermo monitor, coolant water temp.	
23	3862500	2	Temperature sensor	Exhaust
24	3817974	1	Alarm	Mounted at the helm.
25	3887227	1	Wiring harness	L=3.0m, 10 ft., replaced by next part number
	21147169	1	Wiring harness	L=3.0m, 10 ft.
	3887228	1	Wiring harness	L=6.0m, 19.7 ft., replaced by next part number
	21147170	1	Wiring harness	L=6.0m, 19.7 ft.
	3887229	1	Wiring harness	L=8.0m, 26.2 ft., replaced by next part number
	21147171	1	Wiring harness	L=8.0m, 26.2 ft.
26	3887733	1	Wiring harness, y	