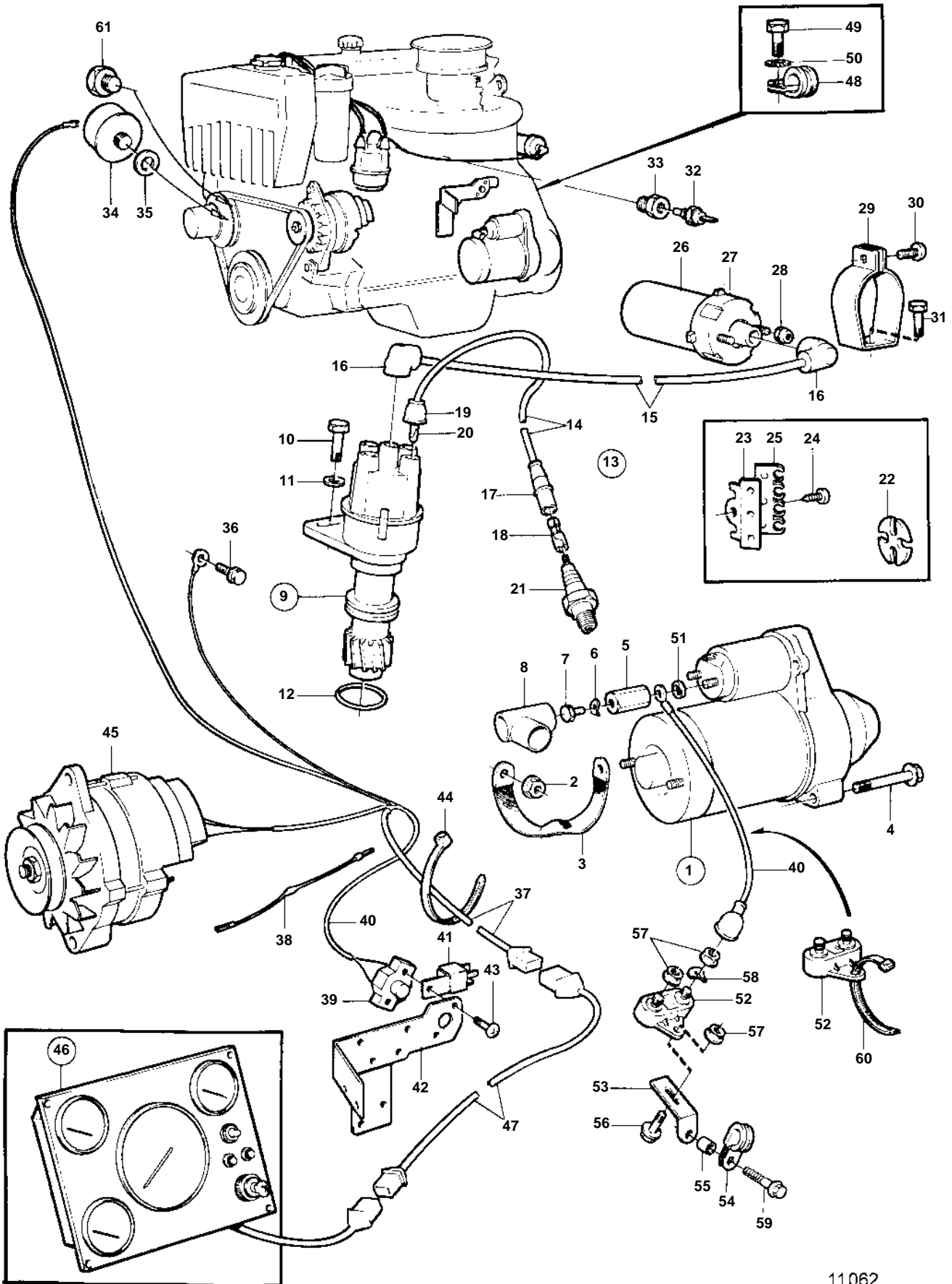


230A



230A

REF	PART NO.	QTY	DESCRIPTION	SEE SEC.	NOTES
1	840808	1	Starter motor		REPLACED BY STARTER 859553 + GROUND CABLE 968048 + NUT 945408., ALSO AVAILABLE AS AN EXCHANGE PART.
	859553	1	Starter motor		ALSO AVAILABLE AS AN EXCHANGE PART., REPL BY 872241
	872241	1	Starter motor		ALSO AVAILABLE AS AN EXCHANGE PART., REPL BY 872888
2	968862	1	Nut		FOR 859553
3	968048	1	Chassie ground cable		FOR 859553
4	946473	2	Flange screw		
5	855314	1	Nut		
6	941907	1	Spring washer		EARLY TYPE
7	940199	1	Hexagon screw		EARLY TYPE
	947107	1	Flange screw		LATE TYPE
8	855798	1	Protecting sleeve		
9	855712	1	Distributor		
10	968885	1	Flange screw		
11	960141	1	Washer		
12	925065	1	O-ring		
13	875571	1	Ignition cable kit		
14		4	· IGNITION CABLE		
15		1	· IGNITION CABLE		
16	464716	2	· Suppressor resistor		
17		4	· Suppressor resistor		
18		4	· Cable terminal		
19	241608	4	· Protective sleeve		
20		4	· Cable terminal		
21	875820	1	Spark plug kit		
22		2	Retainer		
23		1	Retainer		
24	965175	1	Flange screw		
25	463857	1	Retainer		
26	834462	1	Ignition coil		
27		1	Protecting casing		
28	946577	2	Lock nut		
29		1	Clamp		
30		1	Screw		
31	946640	1	Cable terminal		(955523)
32	834629	1	Temperature sensor		REPL BY 872069
	872069	1	Temperature sensor		TO CONNECT TERMINAL ON TEMPERATURE 872069 USE NUT 965483 OR 955780.
33	834621	1	Nipple		
34	3857532	1	Oil pressure sensor		(834920)
35	969011	1	Gasket		(947621)
36		1	Flange screw		(965175)
37	855331	1	Wiring harness		
38	834784	1	Resistor		
39	841178	1	Automatic fuse		
40		X	CABLE AND CABLE TERMINALS	11369	
41	841177	1	Relay		
42	855268	1	Bracket		SEE GROUP 2D
43	950013	2	Cross recessed screw		
44	948210	X	Cable tie		
45		1	ALTERNATOR AND INSTALLATION COMPONENTS	11374	
46		1	Instrument panel		USA, EARLY TYPE
	856015	1	Instrument panel		REPL BY 856674
		1	Instrument panel		EARLY TYPE
	856820	1	Instrument panel		LATE TYPE
47		X	Cable trunk		L = 3000 MM
	835670	X	Cable trunk		L = 6100 MM

230A

REF	PART NO.	QTY	DESCRIPTION	SEE SEC.	NOTES
48	949786	1	Clamp		
49	946440	1	Flange screw		(955523)
50	942767	1	Toothed washer		LATE TYPE
51	829714	1	Sealing ring		EARLY TYPE
52	856355	2	Fuse		55A
53	965570	1	Bracket		
54	941950	1	Clamp		
55	847396	1	Spacer sleeve		LATE TYPE, L = 8 MM
56	946544	1	Flange screw		
57	945407	3	Flange nut		
58	941906	1	Spring washer		
59	946173	1	Flange screw		EARLY TYPE, L = 20 MM
	945444	1	Flange screw		LATE TYPE, L = 25 MM
60	948210	1	Cable tie		
61	960630	1	Plug		