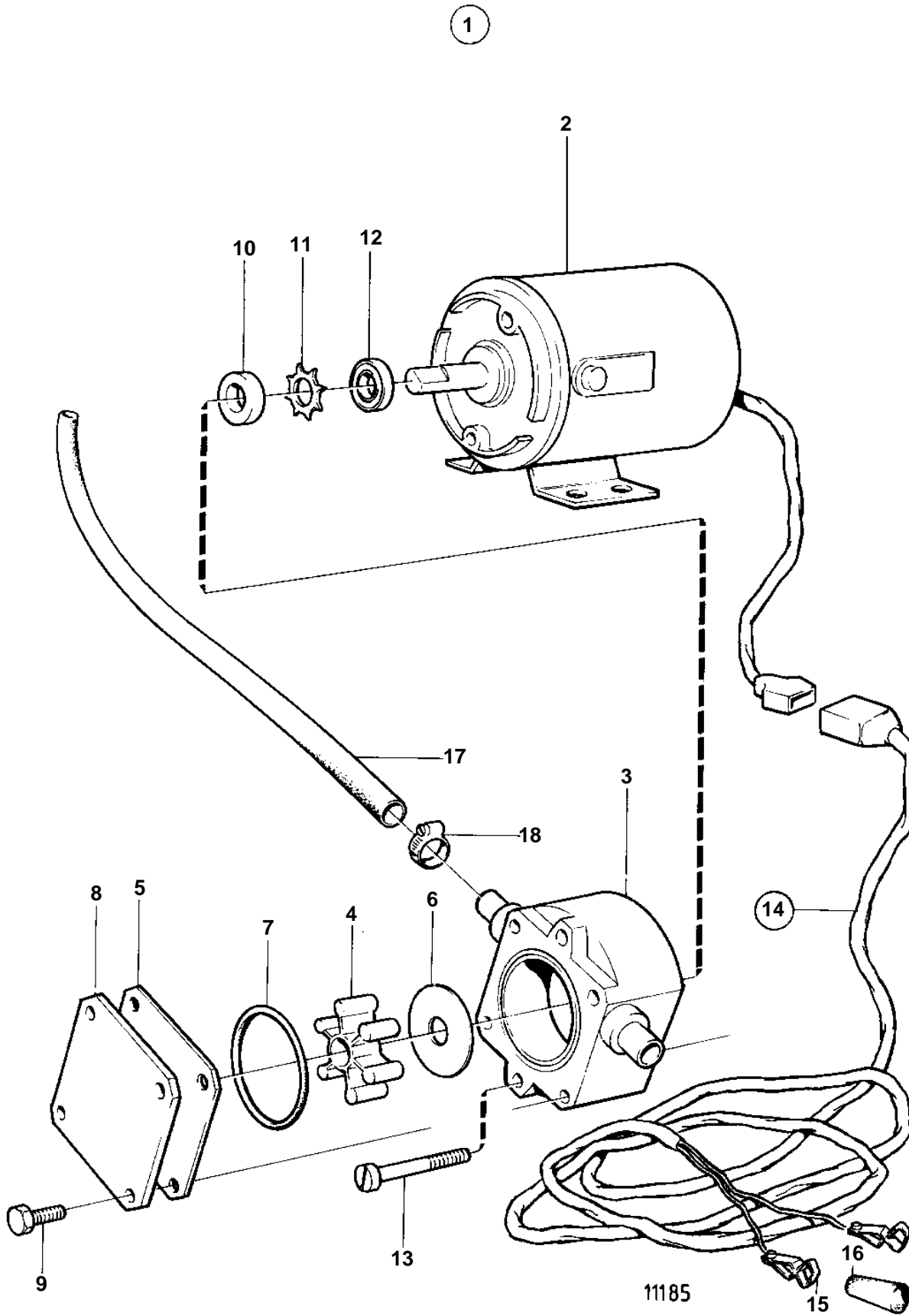


COMMON



COMMON

| REF | PART NO. | QTY | DESCRIPTION | NOTES |
|-----|----------|-----|--------------------------|---------------------------------------|
| 1 | 843410 | 1 | Oil bilge pump | 24V |
| 2 | 842222 | 1 | Electrical motor | 24V |
| 3 | 844015 | 1 | Housing | |
| 4 | | 1 | IMPELLER | IK |
| 5 | 844017 | 1 | Wear washer | |
| 6 | 844016 | 1 | Wear washer | |
| 7 | | 1 | O-RING | IK |
| 8 | 844018 | 1 | Cover | |
| 9 | 844021 | 4 | Screw | |
| 10 | | 1 | SEAL RING | IK |
| 11 | | 1 | LOCK WASHER | IK |
| 12 | 844019 | 1 | Oil deflector ring | |
| 13 | 847464 | 2 | Screw | |
| 14 | 843113 | 1 | · Cable trunk | |
| 15 | | 1 | · · BATTERY TERMINAL | + . REPLACED BY 1EA 844280,1EA 844278 |
| | | 1 | · · BATTERY TERMINAL | - . REPLACED BY 1EA 844280,1EA 844279 |
| | 844280 | 2 | · · Cable terminal | LATE TYPE |
| 16 | 844279 | 1 | · · Isolation | LATE TYPE BLACK |
| | 844278 | 1 | · · Isolation | LATE TYPE RED |
| 17 | 943707 | X | · Rubber hose | 12X4X3000MM |
| 18 | 943471 | 3 | · Hose clamp, HOSE CLAMP | |
| | 844022 | 1 | Impeller kit | |