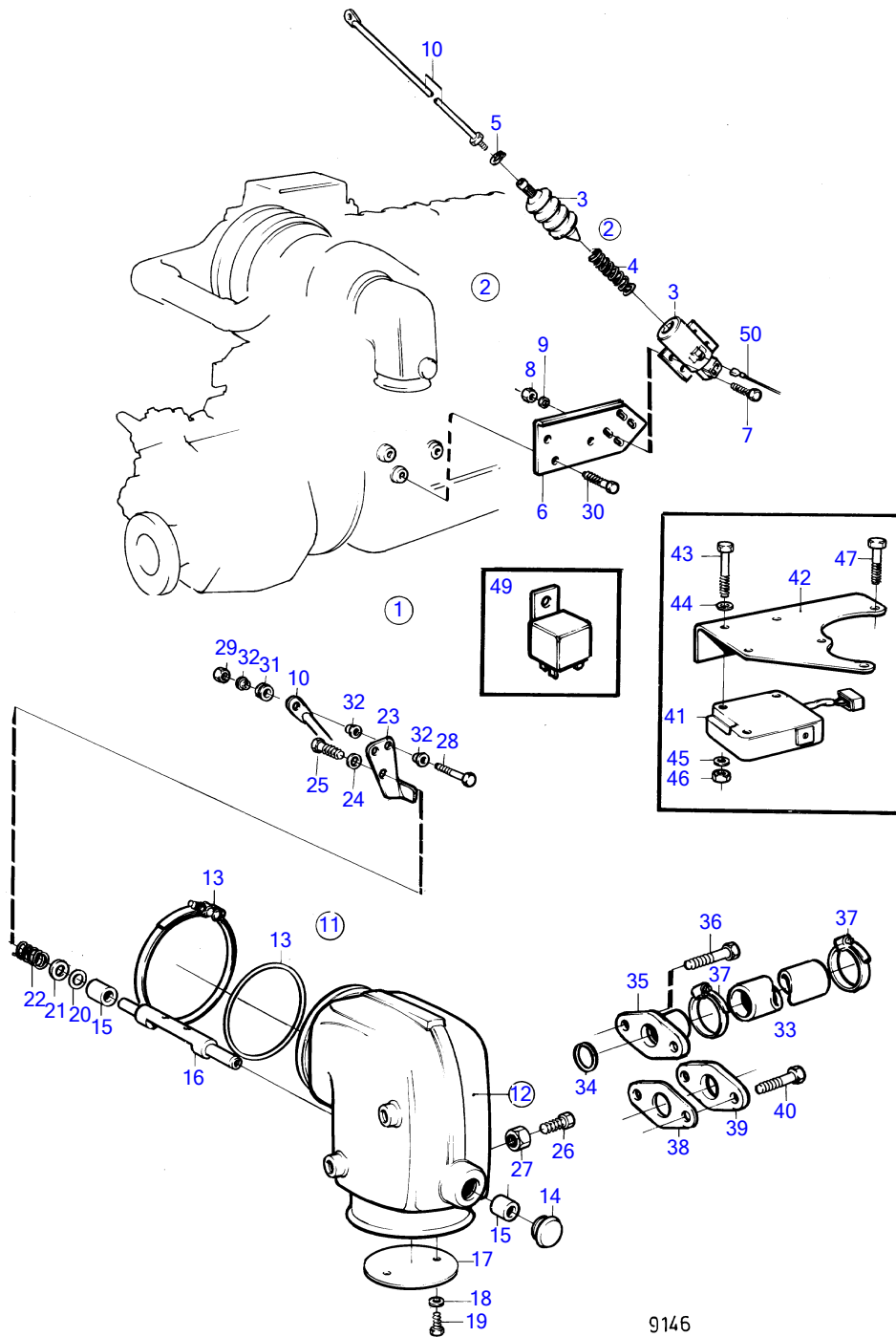


TAMD41A



9146

TAMD41A

REF	PART NO.	QTY	DESCRIPTION	SEE SEC.	NOTES
1	(859268)	1	Exhaust brake		12V, Obsolete part
2	859079	1	• Stop solenoid		
3		1	• • solenoid		
4	843401	1	• • Return spring		
5	(969294)	1	• • Snap ring		Obsolete part
6	(858925)	1	• Bracket		Obsolete part
7	946173	4	• Flange screw		
8	945408	4	• Flange nut		
9	960141	4	• Washer		
10	(858928)	1	• Pull rod		Obsolete part
11	858481	1	• Exhaust riser		
			• Bulletin 44-16	44-16-EN	Overhaul kit, Exhaust Bend
12		1	• • exhaust bend		
13	859052	1	• • • Gasket		(845408)
14	(941255)	1	• • Expansion plug		Obsolete part
15	858478	2	• • Bushing		
16		1	• • shaft		
17		1	• • throttle		
18	940275	2	• • Washer		
19	963537	2	• • Hexagon screw		
20	(968783)	1	• • O-ring		Obsolete part
21	941670	1	• • Washer		
22	(858594)	1	• • Spring		Obsolete part
23	(858926)	1	• • Intermediate lever		Obsolete part
24	960137	1	• • Washer		
25	(955225)	1	• • Hexagon screw		Obsolete part
26	956100	1	• • Cross recessed screw		
27	955781	1	• • Hexagon nut		
28	955274	1	• Hexagon screw		
29	946035	1	• Lock nut		
30	970972	3	• Hexagon screw		(955342)
31	843105	3	• Spacer washer		
32	843109	1	• Bushing		
33	944386	X	• Rubber hose		
34	842913	1	• Sealing ring		
35	858659	1	• Hose connection		
36	946544	2	• Flange screw		
37	943475	2	• Hose clamp		
38	859002	1	• Gasket		
39	844093	1	• Flange		
40	946544	2	• Flange screw		
41	(858760)	1	• Microswitch		Obsolete part
42	(858756)	1	• Bracket		Obsolete part, To be installed on fuel injection pump.
43	(955232)	3	• Hexagon screw		Obsolete part
44	955891	3	• Washer		
45	960137	3	• Washer		
46	963103	3	• Lock nut		
47	946544	3	• Flange screw		
48	842993	1	• V-band clamp		
49	853545	1	• Relay kit		
50		X	cables and terminals		See group 3
	859607	X	Overhaul kit		