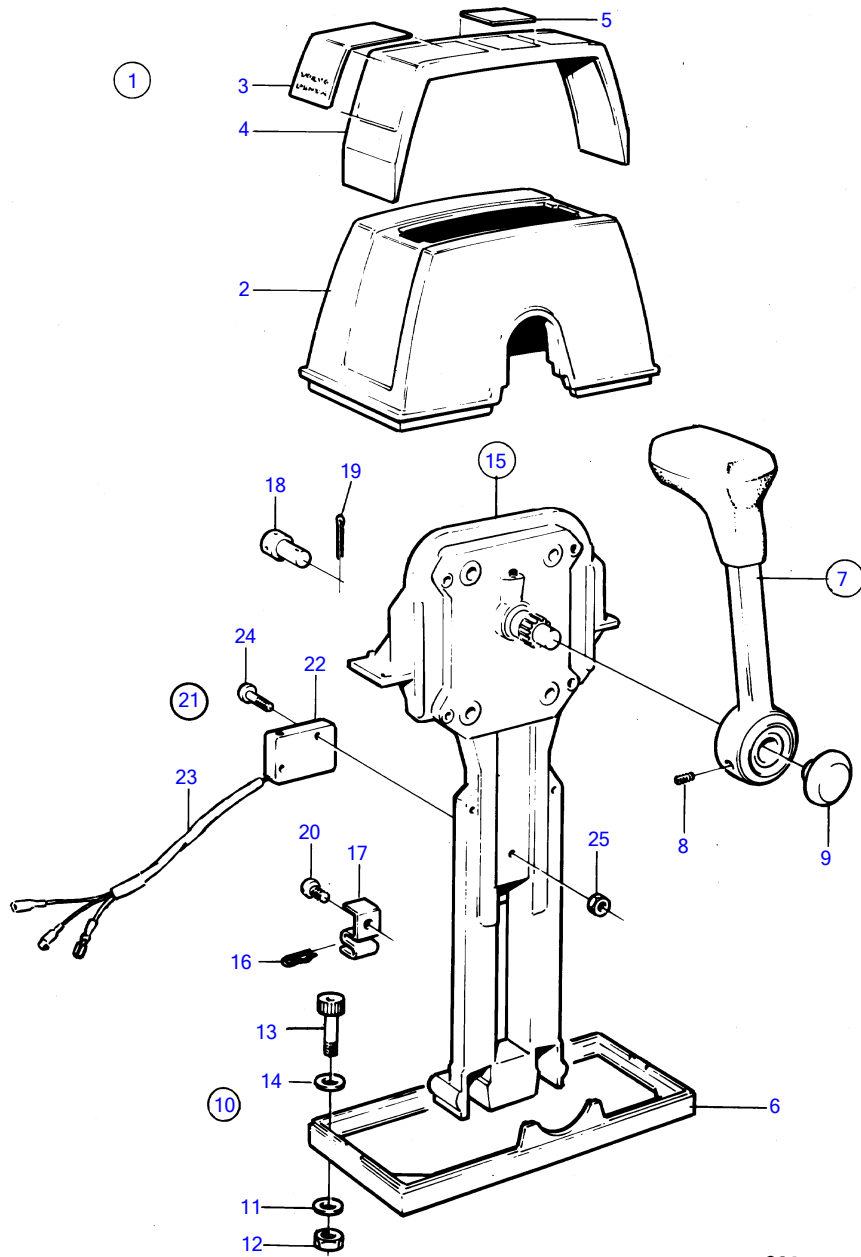


TMD41A, TMD41B, D41A, D41B, TAMD41A, TAMD41B, AQAD41A, AD41A, AD41B



9298

TMD41A, TMD41B, D41A, D41B, TAMD41A, TAMD41B, AQAD41A, AD41A, AD41B

REF	PART NO.	QTY	DESCRIPTION	SEE SEC.	NOTES
1	853169	1	Mounting kit		
2	(851885)	1	• Cover		Obsolete part
3	(851895)	1	• Decal		Obsolete part
4		1	• Crossbar		
5	851897	1	• Decal		
6	839479	1	• Plate		
7	852347	2	• Hand lever		
			• •	19699	
8	963678	2	• • Hex. socket screw		Included in 852347.
9	853004	2	• Push button		
10		1	• Screw kit		
11	960138	6	• • Washer		
12	955780	6	• • Hexagon nut		
13	947671	6	• • Hex. socket screw		
14	940090	6	• • Washer		
15	851600	2	Control		
16	852924	2	• Clip		
17	853423	2	• Retainer		
18	839638	4	• Cube		
19	17253	4	• Split pin		
20	839664	2	• Screw		
21	855352	2	• Neutral position con		
22	850200	2	• Toggle switch		
23		X	• cables and terminals		See group 3
24	946177	4	• Cross recessed screw		
25	947536	4	• Hexagon nut		