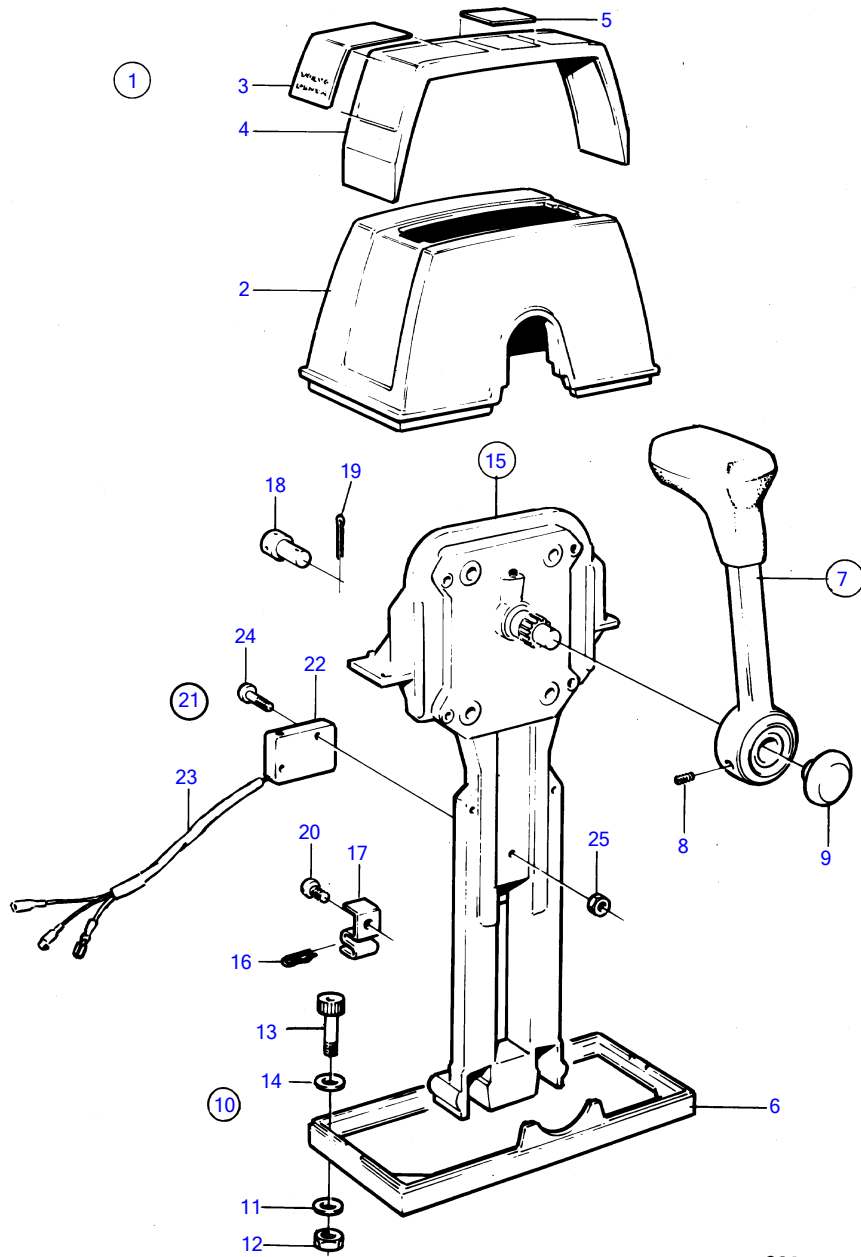


TMD41A, TMD41B, D41A, D41B, TAMD41A, TAMD41B, AQAD41A, AD41A, AD41B



9298

TMD41A, TMD41B, D41A, D41B, TAMD41A, TAMD41B, AQAD41A, AD41A, AD41B

REF	PART NO.	QTY	DESCRIPTION	SEE SEC.	NOTES
1	853168	1	Mounting kit		
2	1140046	1	• Cover		
3	851896	2	• Decal		
4	(851892)	1	• Crossbar		Obsolete part
5	(851898)	1	• Decal		Obsolete part
6	839474	1	• Plate		
7	852347	1	• Hand lever		
			• •	19699	
8	963678	1	• • Hex. socket screw		Included in 852347.
9	853004	1	• Push button		
10		1	• Screw kit		
11	960138	4	• • Washer		
12	955780	4	• • Hexagon nut		
13	947671	4	• • Hex. socket screw		
14	940090	4	• • Washer		
15	851600	1	Control		
16	852924	1	• Clip		
17	853423	1	• Retainer		
18	839638	2	• Cube		
19	17253	2	• Split pin		
20	839664	1	• Screw		
21	855352	1	Neutral position con		
22	850200	1	• Toggle switch		
23		X	• cables and terminals		See group 3
24	946177	2	• Cross recessed screw		
25	947536	2	• Hexagon nut		

7745630-90-19697

9298

Upd:2011-09-27