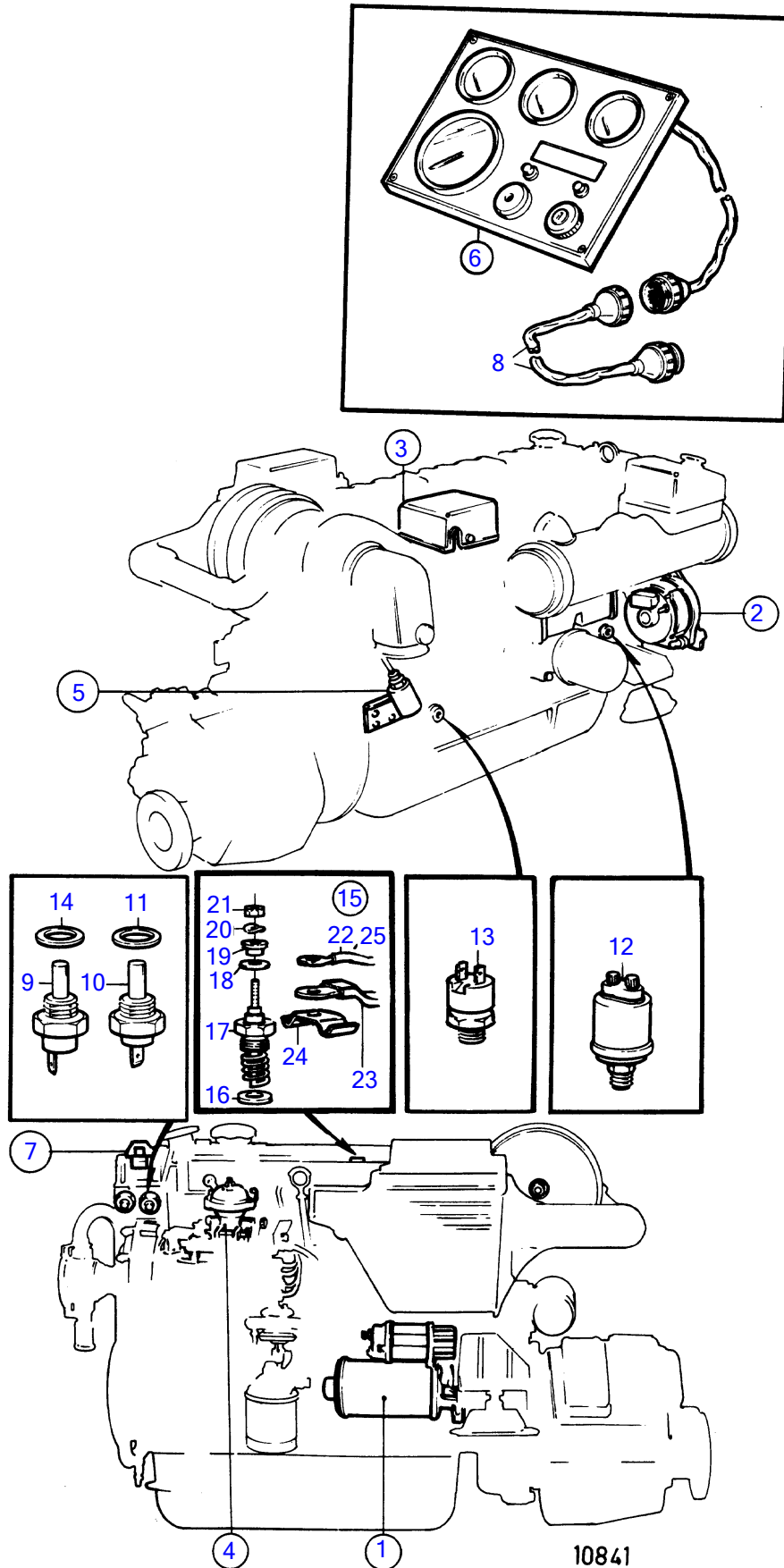


TAMD41A



TAMD41A

REF	PART NO.	QTY	DESCRIPTION	SEE SEC.	NOTES
1		1	starter motor with installation components	19530	
2		1	alternator with installation components	19525	
3		1	electrical box with installation components	19556	
4		1	micro switch with installation components		For engines with wet exhaust line
				19545	
5		1	solenoid with installation components		For engines with wet exhaust line, Product no.867975,867976,868082,868421,868425,868427,868431
				19542	
		1	solenoid with installation components		Product no.868422,868426,868428
					See group 9
6	838809	1	Instrument panel		Product no.867975,867976,868082,868421,868422,868425,868426, SN-2204108611
			.	19539	
	858865	1	Instrument panel		Product no.867975,867976,868082,868421,868422,868425,868426, SN2204108612-2204114999
			.	19540	
	859099	1	Instrument panel		Product no.867975,867976,868082,868421,868422,868425,868426,868433, SN2204115000-2204126822
			.	19539	
	864040	1	Instrument panel		Product no.867975,867976,868082,868421,868422,868425,868426,868433, 12V, SN2204126823-
			.	19541	
			.	19539	
			.	19540	
			.	19539	
			.	19541	
	(858086)	1	Instrument panel		Obsolete part, Product no.868427,868428., SN-2204108611
			.	19539	
	(858866)	1	Instrument panel		Obsolete part, Product no.868427,868428., SN2204108612-2204114999
			.	19540	
	859063	1	Instrument panel		Product no.868427,868428,868431,868434, SN2204115000-
			.	19539	
	864041	1	Instrument panel		Product no.868427,868428,868431,868434, 24V
			.	19540	
7		1	relay with installation components	19548	
8	846648	X	Extension cable'verl		CPC, L=3000mm
	846649	X	Extension cable'verl		CPC, L=5000mm
	846650	X	Extension cable'verl		CPC, L=7000mm
9	833927	1	Thermo monitor		Product no.867975,867976,868082,868421,868422,868425,868426,868433, 12V,93°C
	858229	1	Thermo monitor		Product no.868427,868428,868431,868434, 24V
10	827151	1	Temperature sensor		Product no.867975,867976,868082,868421,868422,868425,868426,868433, 12V,40-120°C
	862326	1	Sensor kit		Product no.868427,868428,868431,868434, 24V

7745630-30-19553

10841

Upd:2011-09-27

TAMD41A

REF	PART NO.	QTY	DESCRIPTION	SEE SEC.	NOTES
11	947624	1	• Gasket		Product no.868427,868428,868431,868434, Included in 862326.
	957181	1	Gasket		
12	843231	1	Oil pressure sensor		Product no.867975,867976,868082,868421,868422,868425,868426,868433, 12V
	862324	1	Oil pressure sensor		Product no.868427,868428,868431,868434, 24V
13	864284	1	Pressure monitor		(848367)
14	957181	1	Gasket		
15	876132	1	Glow plug		Product no.867975,867976,868082,868421,868422,868425,868426,868433
	876132	1	Glow plug		Product no.868427,868428,868431,868434
16	859211	1	• Sealing ring		Product no.867975,867976,868082,868421,868422,868425,868426,868433
	859211	1	• Sealing ring		Product no.868427,868428,868431,868434
17	3581635	2	• Glow plug		Product no.867975,867976,868082,868421,868422,868425,868426,868433
	3581635	2	• Glow plug		Product no.868427,868428,868431,868434
18		1	• o-ring		Product no.867975,867976,868082,868421,868422,868425,868426,868433, Not to be used where contact plate 860044 shall be used.
		1	• o-ring		Product no.868427,868428,868431,868434
19	859328	1	• Thrust sleeve		Product no.867975,867976,868082,868421,868422,868425,868426,868433
	859328	1	• Thrust sleeve		Product no.868427,868428,868431,868434
20	941905	1	• Spring washer		Product no.867975,867976,868082,868421,868422,868425,868426,868433
	941905	1	• Spring washer		Product no.868427,868428,868431,868434
21	965483	1	• Flange nut		Product no.867975,867976,868082,868421,868422,868425,868426,868433
	965483	1	• Flange nut		Product no.868427,868428,868431,868434
22	860173	1	Cable kit		Product no.867975,867976,868082,868421,868422,868425,868426,868433
23	859450	1	Rail		Product no.867975,867976,868082,868421,868422,868425,868426,868433
	859451	1	Rail		Product no.868427,868428,868431,868434, Glow plug 1-2
	859450	1	Rail		Product no.868427,868428,868431,868434, Glow plug 2-3
	859449	1	Rail		Product no.868427,868428,868431,868434, Glow plug 3-4
24	860044	1	Switch brace		Product no.867975,867976,868082,868421,868422,868425,868426,868433
25		X	cables and terminals		Product no.868427,868428,868431,868434, Ground wire
				19549	