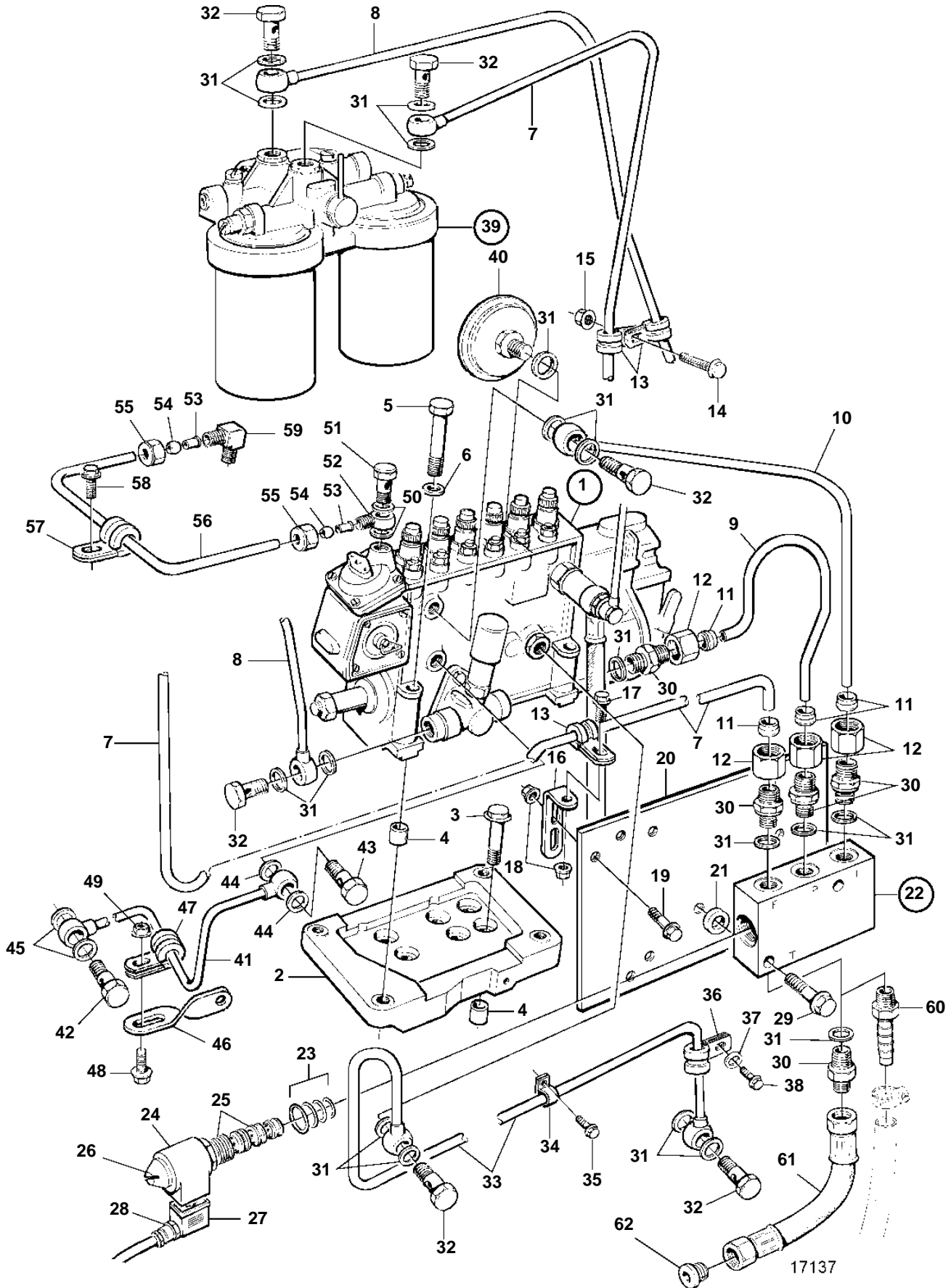


TAMD74A-A, TAMD74A-B



TAMD74A-A, TAMD74A-B

REF	PART NO.	QTY	DESCRIPTION	SEE SEC.	NOTES
1	3831079	1	Injection pump		257kW/2200rpm. TAMD74A-B
	3803805	1	Injection pump, exch		Exchange unit
				5106	
2	477773	1	Shelf		
3	965185	4	Flange screw		
4	417588	2	Guide sleeve		
5	965189	4	Flange screw		
6	941908	4	Spring washer		
7	3826830	1	Fuel pipe		
8	864496	1	Fuel pipe		
9	3826832	1	Fuel pipe		
10	3826833	1	Fuel pipe		
11	956969	3	Ferrule		
12	956983	3	Nut		
13	945081	3	Clamp		
14	967949	1	Screw		(965175)
15	949278	1	Lock nut		
16	965558	1	Bracket		
17	946440	1	Flange screw		
18	948645	2	Lock nut		
19	946173	1	Flange screw		
20		1	Bracket	5454	
21	191172	2	Washer		
22	866699	1	Shut-off valve		24V REPL BY 3828983
	3828983	1	Shut-off valve		Incl 4 ea nipple 941754 and 4 ea gasket 969011.
23	3825238	1	· Gasket kit		FOR 866699. Repl by 3828981
	3828981	1	· O-ring kit		FOR 3828983
24	3825240	1	· Magnet		24 V
25	3825235	1	· Valve		FOR 866699, 3828983
26		1	Nut		
27	866664	1	Connector unit		
28	844576	1	Cable union		
29	947760	2	Flange screw		
30	941754	4	Nipple		
31	969011	14	Gasket		
32	25167	5	Hollow screw		
33	3826927	1	Oil return pipe		
34	940374	1	Clamp		
35	946440	1	Flange screw		
36	942542	1	Clamp		
37	190509	1	Washer		
38	946471	1	Screw		
39	864315	1	Fuel filter		
				4908	
40	477173	1	Pressure equalizer		
41	477986	1	Oil feed pipe		
42	969299	1	Hollow screw		
43	48634	1	Hollow screw		
44	947281	2	Gasket		
45	11994	2	Gasket		
46	1136551	1	Bracket		
47	952623	1	Clamp		
48	946544	1	Flange screw		
49	945407	1	Flange nut		
50	11994	2	Gasket		
51	969299	1	Hollow screw		
52	945417	1	Nipple		
53	944717	2	Sleeve		
54	954364	2	Fitting		
55	954356	2	Cap nut		
56	945460	X	Plastic pipe		

TAMD74A-A, TAMD74A-B

REF	PART NO.	QTY	DESCRIPTION	SEE SEC.	NOTES
57	940374	1	Clamp		
58	946440	1	Flange screw		
59	954385	1	Elbow nipple		
60	3825000	1	Nipple		
61	3830309	1	Fuel hose		
62	22753	2	Nipple		