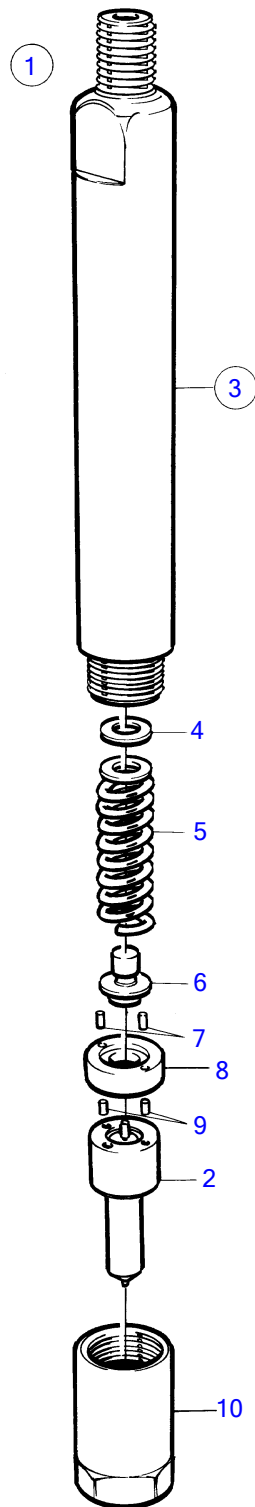


TAMD63L-A, TAMD63P-A



15452

TAMD63L-A, TAMD63P-A

| REF | PART NO. | QTY | DESCRIPTION | NOTES |
|-----|----------|-----|------------------------|--------------------|
| 1 | 865561 | 1 | Injector | |
| 2 | 866058 | 1 | • Nozzle | |
| 3 | (477505) | 1 | • Nozzle retainer | Obsolete part |
| 4 | 3094406 | X | • • Adjusting washer | TH=1,00mm (244797) |
| | 244798 | X | • • Shim | TH=1,04mm |
| | 3094407 | X | • • Adjusting washer | TH=1,08mm (244788) |
| | 244804 | X | • • Shim | TH=1,12mm |
| | 3094408 | X | • • Adjusting washer | TH=1,16mm (244801) |
| | 3094469 | X | • • Adjusting washer | TH=1,20mm (244799) |
| | 6212417 | X | • • Adjusting washer | TH=1,22mm |
| | 3094470 | X | • • Adjusting washer | TH=1,24mm (244805) |
| | 244807 | X | • • Shim | TH=1,28mm |
| | 244789 | X | • • Shim | TH=1,32mm |
| | 858908 | X | • • Adjusting washer | TH=1,34mm |
| | 3094471 | X | • • Adjusting washer | TH=1,36mm (244811) |
| | 846966 | X | • • Adjusting washer | TH=1,38mm |
| | 3094472 | X | • • Adjusting washer | TH=1,40mm (244800) |
| | 244790 | X | • • Shim | TH=1,44mm |
| | 3094473 | X | • • Adjusting washer | TH=1,48mm (244802) |
| | 244791 | X | • • Shim | TH=1,52mm |
| | 846954 | X | • • Adjusting washer | TH=1,54mm |
| | 3094474 | X | • • Adjusting washer | TH=1,56mm (244792) |
| | 858906 | X | • • Adjusting washer | TH=1,59mm |
| | 3094475 | X | • • Adjusting washer | TH=1,60mm (244793) |
| | 846970 | X | • • Adjusting washer | TH=1,62mm |
| | 3094476 | X | • • Adjusting washer | TH=1,64mm (244806) |
| | 244803 | X | • • Shim | TH=1,68mm |
| | 858905 | X | • • Adjusting washer | TH=1,70mm |
| | 3094477 | X | • • Adjusting washer | TH=1,72mm (244794) |
| | 244812 | X | • • Shim | TH=1,76mm |
| | 846975 | X | • • Adjusting washer | TH=1,78mm |
| | 844328 | X | • • Adjusting washer | TH=1,80mm |
| | 6212420 | X | • • Adjusting washer | TH=1,82mm |
| | 846958 | X | • • Adjusting washer | TH=1,84mm |
| | 3094409 | X | • • Adjusting washer | TH=1,86mm (244808) |
| | 244813 | X | • • Adjusting washer | TH=1,88mm |
| | 3094478 | X | • • Adjusting washer | TH=1,92mm (244795) |
| | 846959 | X | • • Adjusting washer | TH=1,94mm |
| | 3094467 | X | • • Adjusting washer | TH=1,96mm (244796) |
| | 846980 | X | • • Adjusting washer | TH=1,98mm |
| 5 | 244820 | 1 | • • Compression spring | |
| 6 | 3094597 | 1 | • • Pressure bolt | |
| 7 | 844339 | 2 | • • Locating pin | |
| 8 | 1698513 | 1 | • • Washer | |
| 9 | 244447 | 2 | • • Pin | |
| 10 | 3092030 | 1 | • • Fitting nut | |