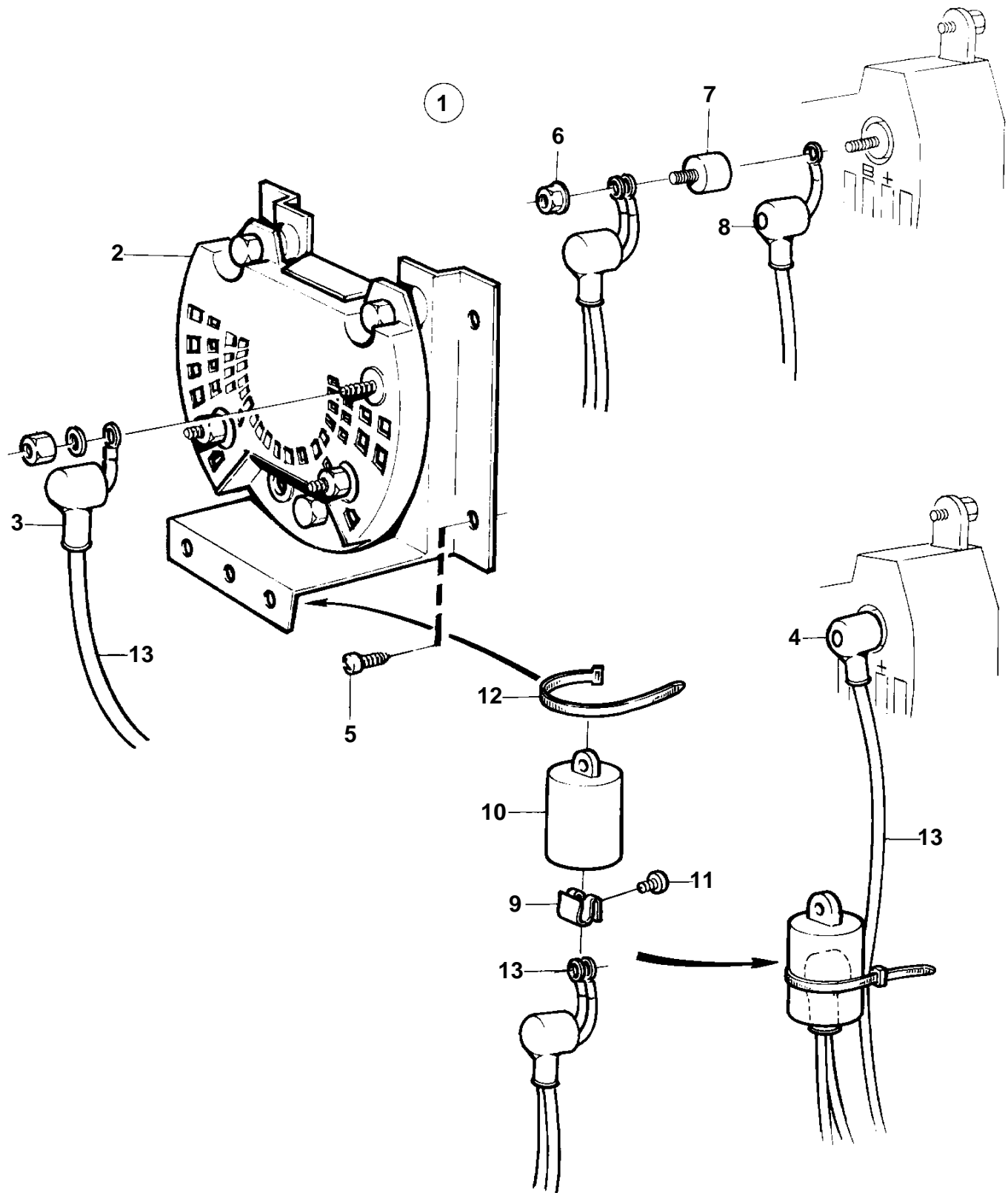


COMMON, TAMD63L-A, TAMD63L-B, TAMD63P-A, TAMD71B, TAMD73P-A, TAMD73WJ-A, TAMD74A-A, TAMD74A-B, TAMD74C-A, TAMD74L-A, TAMD74P-A, TAMD74C-B, TAMD74L-B, TAMD74P-B



COMMON, TAMD63L-A, TAMD63L-B, TAMD63P-A, TAMD71B, TAMD73P-A, TAMD73WJ-A, TAMD74A-A, TAMD74A-B, TAMD74C-A, TAMD74L-A, TAMD74P-A, TAMD74C-B, TAMD74L-B, TAMD74P-B

REF	PART NO.	QTY	DESCRIPTION	SEE SEC.	NOTES
1	858841	1	Charge distributor		REPLACED BY 859499. For charging of 2 batteries.. For alternator 12V 50A.
2		1	• Charge distributor		
3	842150	3	• Protective cap		
5	828647	4	• Screw		Not included in later version of kit 858841.
6	945407	2	• Flange nut		Not included in later version of kit 858841.
7	862330	1	• Rubber bushing		
8		1	• Protective cap		
12	948211	1	• Strip clamp		
13		X	• Electrical materials	1963	