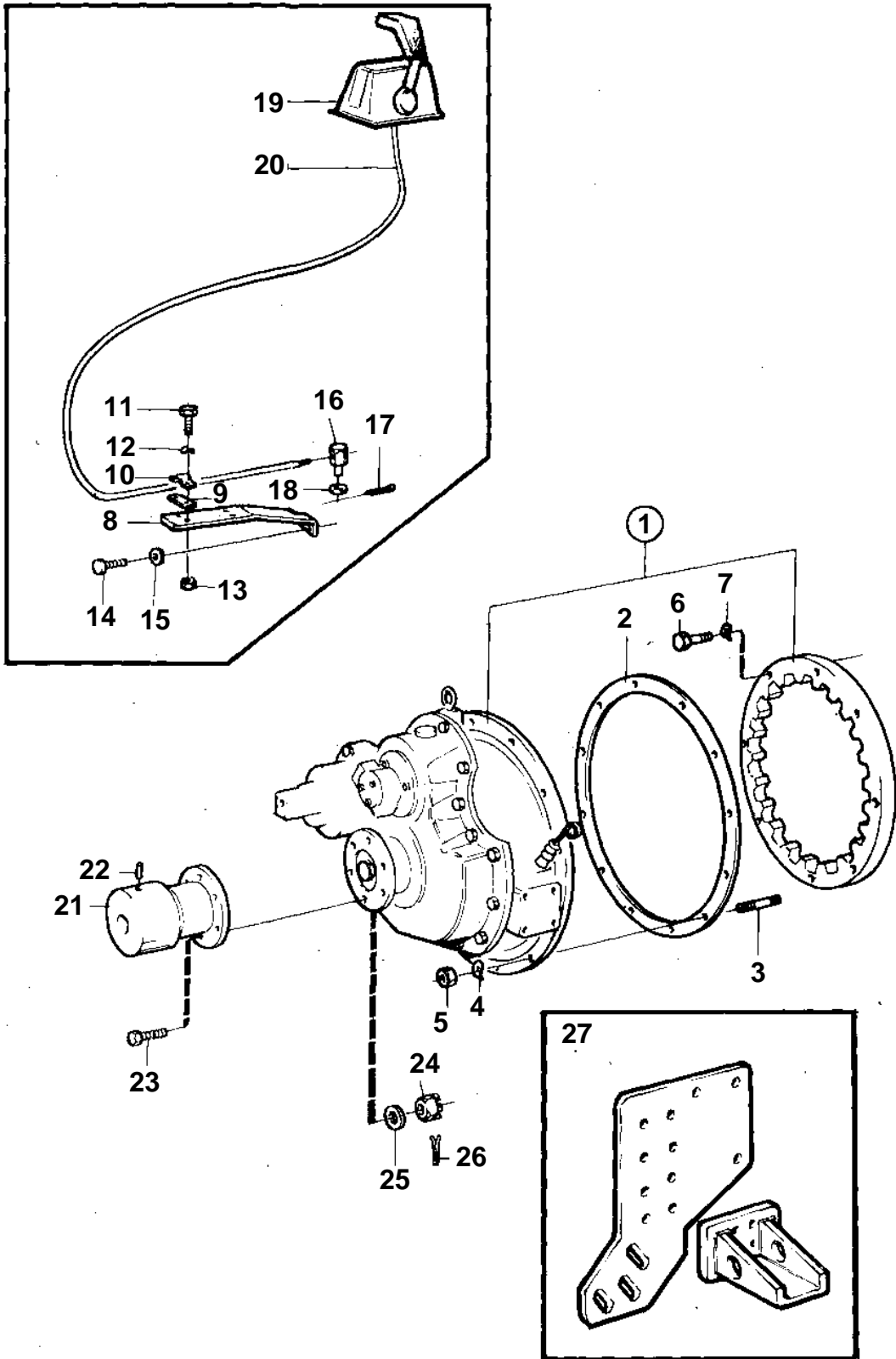


TAMD61A



16334

## TAMD61A

REF	PART NO.	QTY	DESCRIPTION	NOTES
1		1	Reversing gear Comps. not spec.	RATIO -2.54:1
2	862623	1	Gasket	
3	953486	11	Stud	EARLY TYPE
	955536	1	Screw	EARLY TYPE
	953486	12	Stud	LATE TYPE
4	942336	12	Spring washer	
5	955827	12	Nut	
6	940162	8	Screw	
7	942336	8	Spring washer	
8	863483	1	Bracket	
9	819068	1	Washer	
10	819067	1	Brace	For control cable 333, 33c.
	6853782	1	Clamp	For control cable 443, 43c.
11	956079	2	Screw	
12	941905	2	Spring washer	LATE TYPE
13	963104	2	Nut	
14	970948	1	Screw	
15	941908	1	Spring washer	
16	853217	1	Cube	
17	17253	1	Cotter pin	
18	940191	1	Washer	
19		X	Control	SEE GROUP 27
20		X	Control cable	SEE GROUP 27
21		1	Companion flange	
22	830738	1	· Flange	
23	955737	6	· Screw	
24	955886	6	· Nut	
25	941912	6	· Spring washer	
26	907861	6	· Cotter pin	
27		2	Engine suspension	SEE GROUP 21