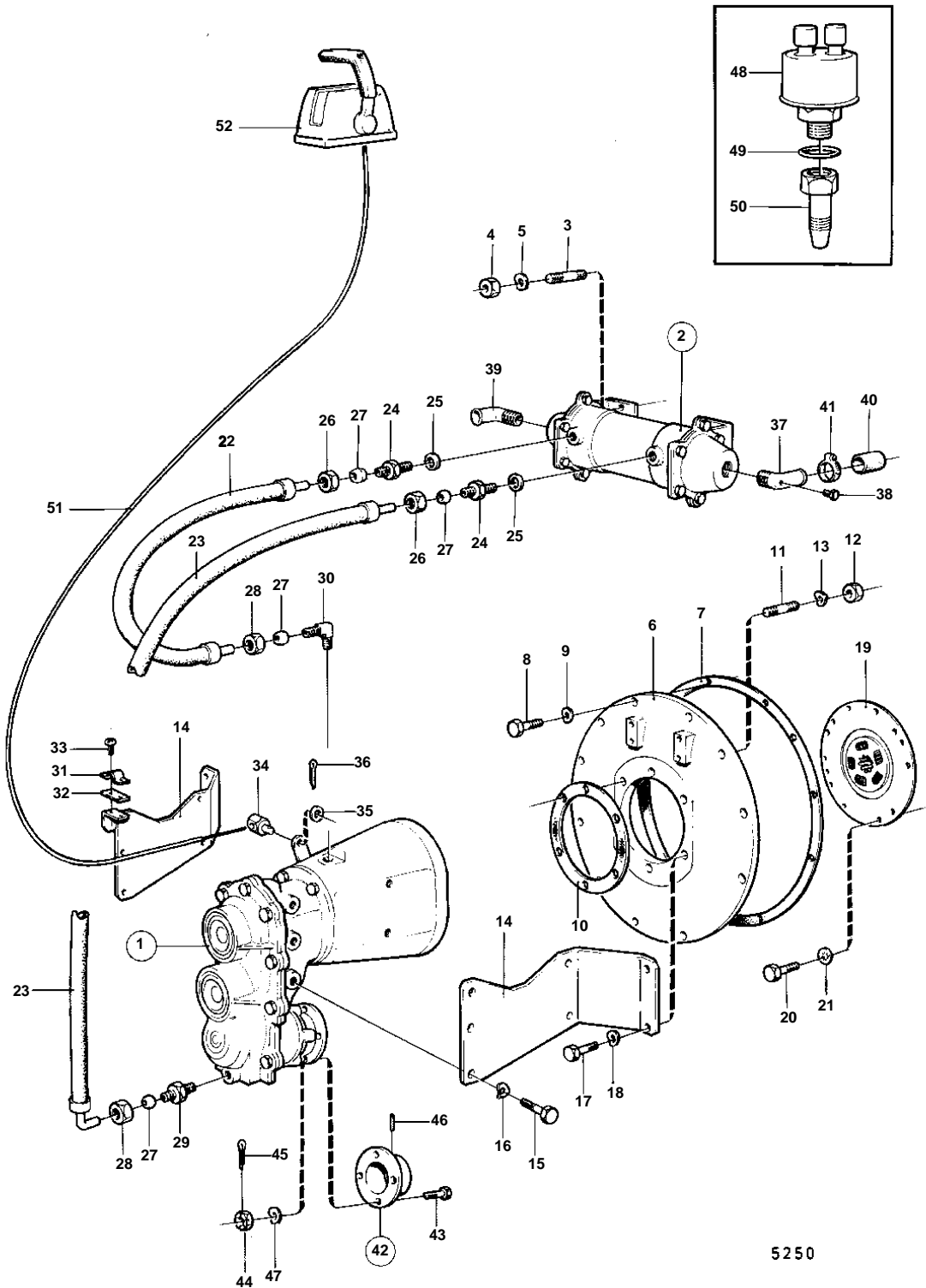


TAMD60A,TAMD60B



5250

TAMD60A,TAMD60B

REF	PART NO.	QTY	DESCRIPTION	SEE SEC.	NOTES
1		1	GEAR, RATIO 1,5:1		
		1	GEAR, RATIO 1,53:1		OPPOSITE REVOLUTION IN RELATION TO ENGINE.
		1	GEAR, RATIO 1,99:1		
		1	GEAR, RATIO 1,98:1		OPPOSITE REVOLUTION IN RELATION TO ENGINE.
			COMPONENTS		
2	804472	1	Oil cooler	04A-0650	
3	953043	4	Stud		
4	955782	4	Nut		
5	941907	4	Spring washer		
6	803901	1	Connection flange		
7	800751	1	Gasket		
8	955535	8	Screw		
9	942336	8	Spring washer		
10	803921	1	Gasket		
11	953530	6	Stud		
12	940157	6	Nut		
13	941909	6	Spring washer		
14	842463	1	Bracket		S.B
	842464	1	Bracket		P
15	940116	10	Screw		
16	941909	10	Spring washer		
17	955536	4	Screw		
18	942336	4	Spring washer		
19	809459	1	Vibration damper		
20	20463	8	Screw		
21	955950	8	Lock washer		
22	829259	1	Hose		
23	829261	1	Hose		
24	943755	2	Fitting		
25	957184	2	Washer		
26	941331	2	Nut		
27	956970	4	Ferrule		
28	956984	2	Nut		
29	941750	1	Nipple		
30	941750	2	Nipple		(941757)
31	819067	1	Brace		
32	819068	1	Washer		
33	950021	2	Screw		
34	813674	1	Cube		
35	940191	1	Washer		
36	17276	1	Cotter pin		
37	942334	1	Hose attachment		
38	192134	1	Plug		
39	836759	1	Hose attachment		
40	13430	X	Rubber hose		L = 60 MM
41	943475	2	Hose clamp		
42	829279	1	Companion flange		FOR 35MM SHAFT.
	829281	1	Companion flange		FOR 40MM SHAFT.
43	955692	4	• Screw		
44	955883	4	• Nut		
45	907834	4	• Cotter pin		
46	907617	1	• Pin		
47	941909	4	• Spring washer		
48	837781	1	Pressure sensor		SEE GROUP 3
49	957181	1	Gasket		
50	842522	1	Nipple		
51			CONTROL CABLE		SEE GROUP 9
52			CONTROL		SEE GROUP 9