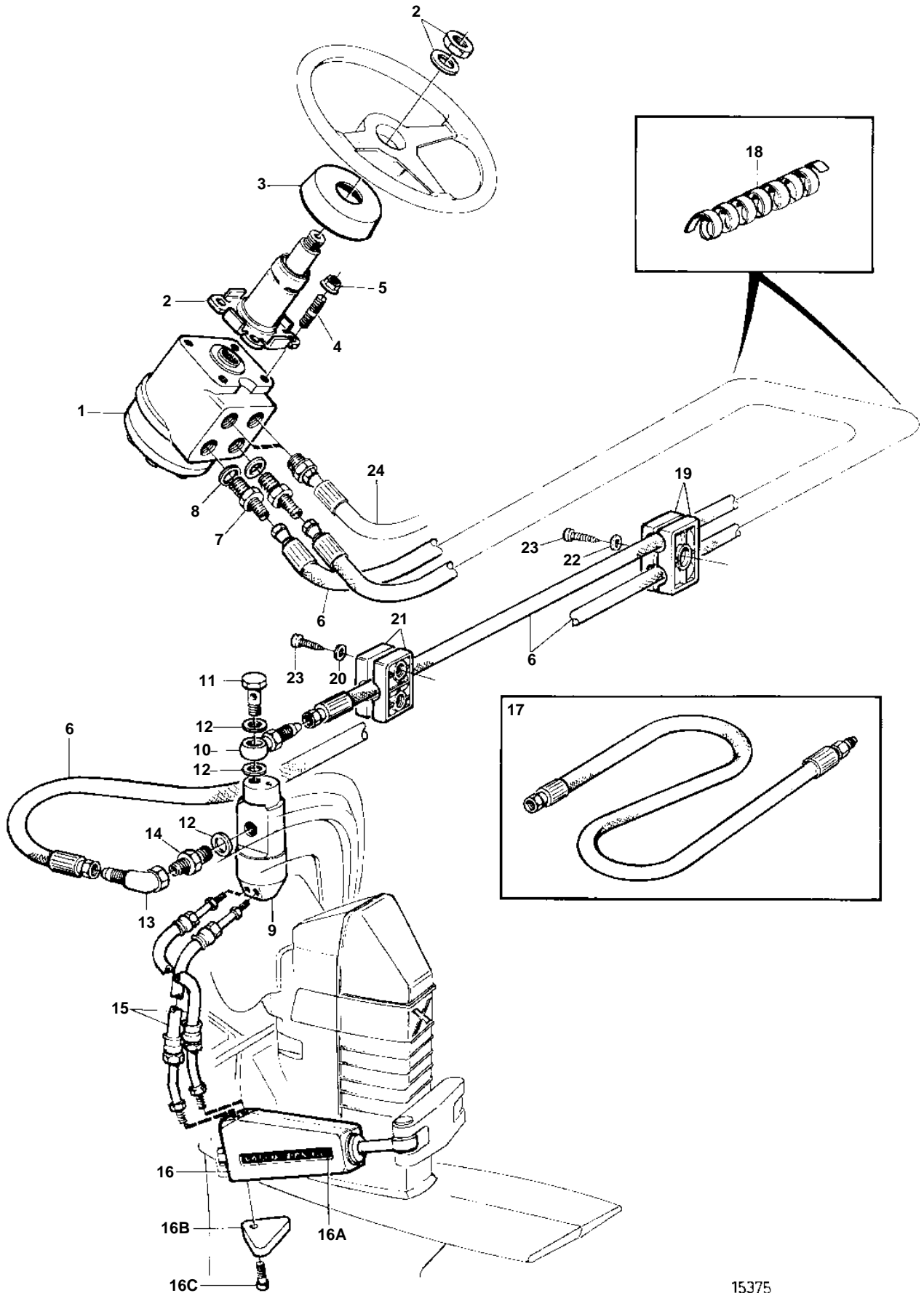


DPX



DPX

| REF | PART NO. | QTY | DESCRIPTION | SEE SEC. | NOTES |
|-----|----------|-----|-------------------|----------|---|
| 1 | 872155 | 1 | Control unit | | |
| 2 | 872157 | 1 | Retainer | | |
| 3 | 873357 | 1 | Cover | | |
| 4 | 924085 | 4 | Stud | | |
| 5 | 971095 | 4 | Nut | | |
| 6 | 872158 | 2 | Hose | | L=6,0m |
| 7 | 873340 | 2 | Nipple | | |
| 8 | 873341 | 2 | Washer | | |
| 9 | 872956 | 1 | Grommet | | |
| 10 | 873325 | 1 | Banjo nipple | | |
| 11 | 873326 | 1 | Hollow screw | | |
| 12 | 873327 | 3 | Washer | | |
| 13 | 873328 | 1 | Elbow nipple | | |
| 14 | 873329 | 1 | Nipple | | |
| 15 | 872593 | 4 | Hose | | |
| 16 | 873231 | 2 | Steering cylinder | | Mounted on intern. housing of the drive unit and connected to the hook up fork. |
| 16A | 872965 | 2 | Decal | | |
| 16B | 872793 | 2 | Zinc anode kit | | |
| 16C | 963683 | 2 | · Screw | | |
| 17 | 872169 | 1 | Hydraulic hose | | L=1,0m |
| 18 | 873331 | 1 | Coil | | |
| 19 | 873335 | 1 | Clamp | | |
| 20 | 873337 | 1 | Washer | | |
| 21 | 873336 | 1 | Clamp | | |
| 22 | 873338 | 1 | Washer | | |
| 23 | 873339 | 3 | Screw | | |
| 24 | 872158 | 2 | Hose | 641 | |