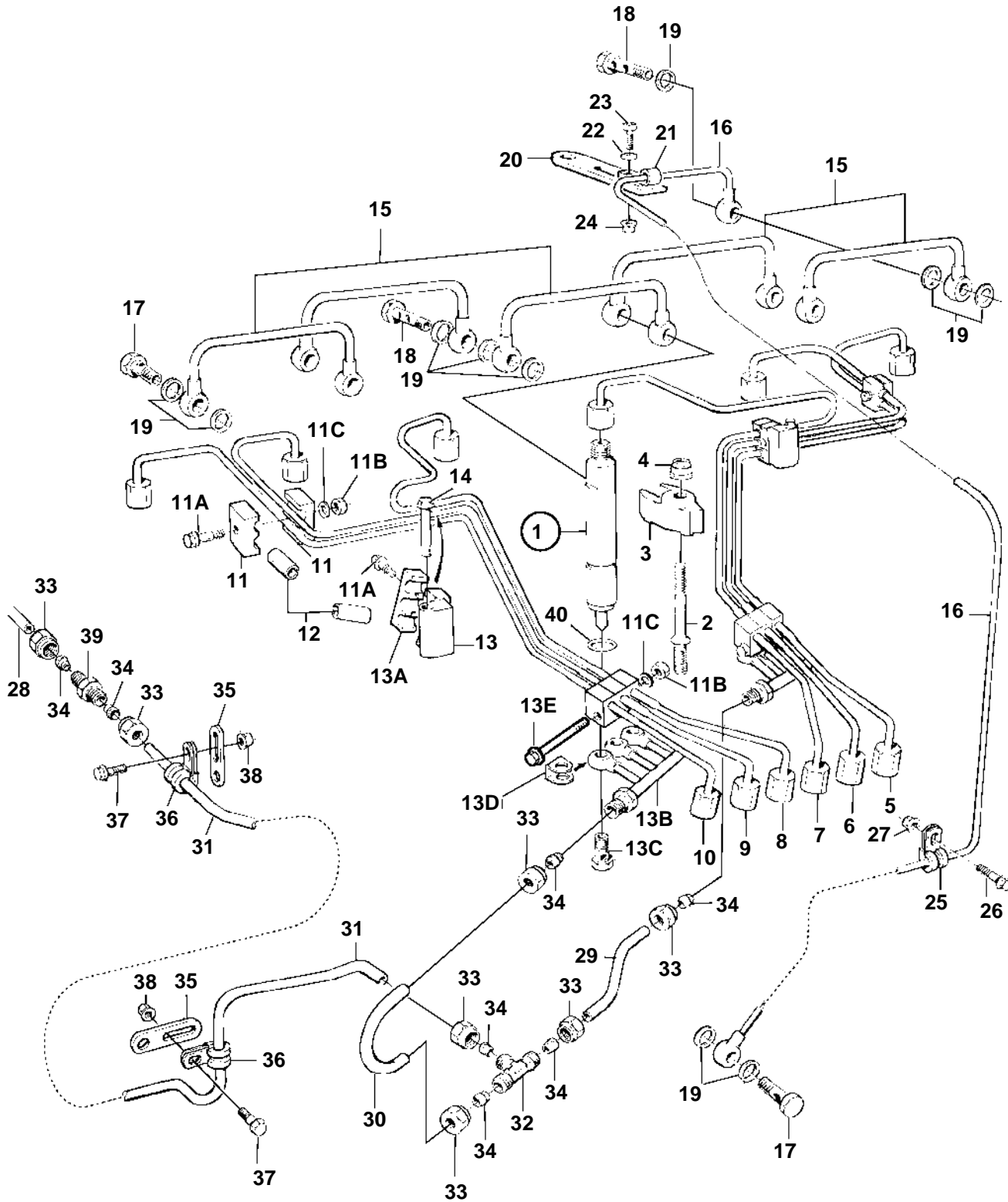


TAMD165C-A, TAMD165A-A



16051

TAMD165C-A, TAMD165A-A

REF	PART NO.	QTY	DESCRIPTION	SEE SEC.	NOTES
1	3836086	6	Injector		
				5321	
2	470560	6	Stud		
3	1543497	6	Yoke		
4	1543499	6	Nut		
5	849804	1	Delivery pipe, jacketed		CYL 1
6	849805	1	Delivery pipe, jacketed		CYL 2
7	849806	1	Delivery pipe, jacketed		CYL 3
8	849807	1	Delivery pipe, jacketed		CYL 4
9	849808	1	Delivery pipe, jacketed		CYL 5
10	849809	1	Delivery pipe, jacketed		CYL 6
11	865834	4	Clamp		2 PIPES
11A	940101	6	Screw		
11B	949278	4	Lock nut		
11C		4	Washer		
12		X	Hose		L=20mm
13	865835	1	Retainer		CYL 1,2,3
	865841	1	Retainer		CYL 4,5,6
13A	3826354	2	Clamp		3 PIPES
13B	865833	2	Leak-off pipe		
13C	74033	6	Hollow screw		
13D	845953	6	Gasket		
13E	948081	2	Screw		(955279)
14	965181	2	Screw		
15	1543683	5	Tube		
16	862142	1	Leak-off line		
17	74033	2	Hollow screw		L=16mm
18	966834	5	Hollow screw		L=24mm
19	947620	19	Gasket		ALT
	18811	19	Gasket		ALT
20	965534	1	Bracket		
21	121563	1	Clamp		
22	955892	1	Washer		
23	956094	1	Screw		
24	945407	1	Flange nut		
25	947191	1	Clamp, fuel filter bracket		
26	946440	1	Flange screw, fuel filter bracket		
27	945408	1	Flange nut, fuel filter bracket		
28	3826080	1	Fuel pipe, leakage sensor	5399	
29	3826753	1	Pipe		
30	3826755	1	Pipe		
31	3826754	1	Pipe		
32	957123	1	T-nipple		
33	956983	7	Nut		
34	956969	7	Ferrule		
35	965534	1	Bracket, starter cover		
	965534	2	Bracket, crankcase vent.		
36	952625	3	Clamp		
37	946934	3	Flange screw		
38	945407	3	Flange nut		
39	957055	1	Nipple		
40		X	Sealing ring	5284	