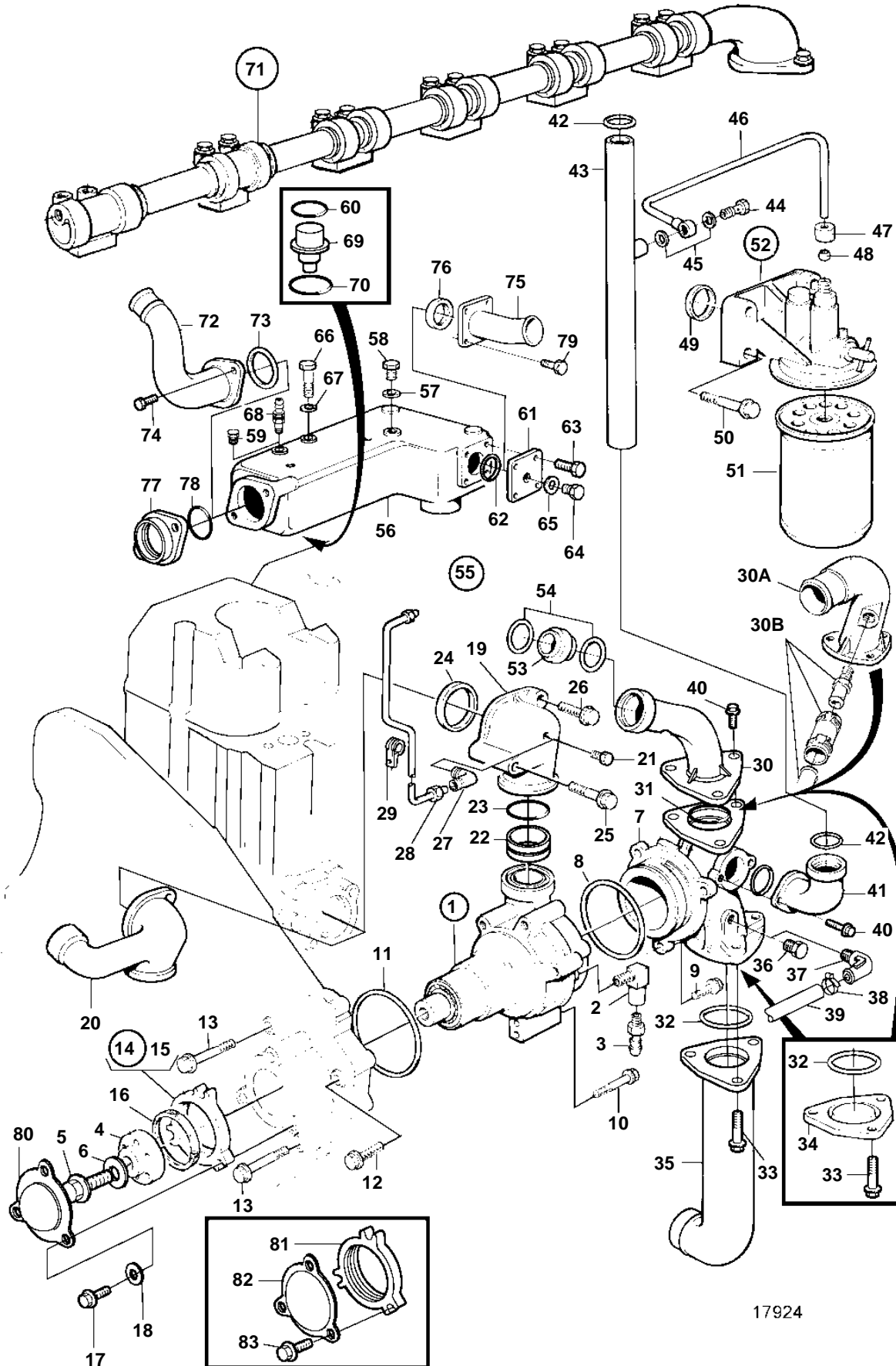


TAMD162A, TAMD162B, TAMD162C, TAMD162C-B



TAMD162A, TAMD162B, TAMD162C, TAMD162C-B

REF	PART NO.	QTY	DESCRIPTION	SEE SEC.	NOTES
1		1	Water pump		
				1516	
2	1543847	1	Nipple		
3	966723	1	Peg		
4	1543891	1	Hub		
5	471555	1	Screw		
6	1543923	1	Washer		
7	863607	1	Rear section		
8	925096	1	O-ring		
9	945444	3	Flange screw		
10	969189	2	Flange screw		
11	925266	1	O-ring		
12	965223	1	Flange screw		
13	947790	2	Flange screw		
14		1	Retainerassy.		
15	1543539	1	· Retainer		
16	1543908	1	· Sealing ring		
17	946470	3	Flange screw		
18	955894	3	Washer		
19		1	Pipe		SN-XXXXXXXXXX/11847. Replaced by 1pc pipe 866131, 1pc seal ring 1556389, 1pc seal ring 1556397, 1pc ring 1556412.
		1	Pipe		SNXXXXXXXXXX/11848-12311. Replaced by 1pc pipe 866131, 1pc seal ring 1556389, 1pc seal ring 1556397, 1pc ring 1556412.
	866131	1	Pipe		SNXXXXXXXXXX/12312-
20		1	Connection pipe		For radiator-cooled engine.
		1	Connection pipe		For engine mounted heat exchanger with fresh-water-cooled charge-air-cooler.
21	180759	1	Plug		
22	1543573	1	Sealing ring		SN-XXXXXXXXXX/11847. Replaced by 1 ea sealing ring 1556397 and 1 ea ring 1556412.
	1556397	1	Sealing ring		SNXXXXXXXXXX/11848-
23	1556412	1	Ring		SNXXXXXXXXXX/11848-
24	1543172	1	Sealing ring		SN-XXXXXXXXXX/11847
	1556389	1	Sealing ring		SNXXXXXXXXXX/11848-
25	965182	1	Flange screw		
26	945444	1	Flange screw		
27	954343	2	Elbow nipple, intercooler		For separately mounted (central-) heat exchanger and keel cooling.
28	863719	1	Tube		For separately mounted (central-) heat exchanger and keel cooling.
29	942400	2	Clamp		For separately mounted (central-) heat exchanger and keel cooling.
30	866569	1	Return pipe		For engine mounted heat exchanger.
30A	3825562	1	Return pipe		For engines in with keel cooling.
30B		1	Connectorexpanstank		
31	925073	3	O-ring		
32	925255	1	O-ring		Radiator cooling.
33	945444	3	Flange screw		
34	849821	1	Cover		Replaced by 1pc cover 3825918 and 1pc plug 479979.
35	849739	1	Coolant pipe		Radiator cooling.
36	479956	1	Plug		
37	942649	1	Nipple		When separate expansion tank is being used.
38	943475	2	Hose clamp		When separate expansion tank is being used.
39	944386	X	Hose, expansion tank		When separate expansion tank is being used.
40	945444	5	Flange screw		
41	864883	1	Connection pipe		(864942)
42	1543572	2	Sealing ring		
43	849398	1	Tube, by-pass		
44	25167	1	Hollow screw		
45	969011	2	Gasket		
46	849822	1	Tube		
47	956983	1	Nut		

TAMD162A, TAMD162B, TAMD162C, TAMD162C-B

REF	PART NO.	QTY	DESCRIPTION	SEE SEC.	NOTES
48	956969	1	Ferrule		
49	469846	1	Sealing ring		
50	946671	4	Flange screw		
51	1699830	1	Coolant filter		
52	1661685	1	Bracket		
				417	
53	864257	1	Tube, L=108mm		For separately mounted (central-) heat exchanger and keel cooling.
	866562	1	Pipe, L=60mm		(863508). For engine mounted heat exchanger.
54	863599	2	Sealing ring		
55	876702	1	Thermostat housing		
	876843	1	Thermostat housing		For engines in with keel cooling.
56	876702	1	· Thermostat housing		(864881)
		1	· Thermostat housing		For engines in with keel cooling.
57	18665	1	· Gasket		
58	960628	1	· Plug		
59	479979	1	· Plug		
60	1544710	2	· Sealing ring		
61	849843	1	Cover		
62	1664473	1	O-ring		
63	946173	4	Flange screw		
64	914394	1	Plug		
65	947629	1	Gasket		
66	955311	3	Screw		
67	941907	3	Spring washer		
68	966871	1	Tap		
69		2	Thermostat marked red		82°C, REPL BY 8149186
	8149186	2	Thermostat, marked green		86°C
70	1544410	2	Sealing ring		
71			Collecting pipe	4458	
72	849609	1	Connection pipe		Radiator cooling.
73	925077	1	O-ring		Radiator cooling.
74	945444	2	Flange screw		
75	3830257	1	Riser		(864616). For separately mounted (central-) heat exchanger and keel cooling.
76	843584	1	Sealing ring		For separately mounted (central-) heat exchanger and keel cooling.
77		1	Connector expansion tank	1116	
78	925078	1	O-ring		
79	945444	4	Flange screw		
80	3826099	1	Protecting casing		No alternator.. Replaced by 1ea cover 3826801, 1ea retainer 1543539 and 3ea flange screw 965180.
81	1543539	1	Retainer		No alternator.
82	3826801	1	Cover		No alternator.
83	965180	3	Flange screw		No alternator.